

1040 E. MAPLE ROAD
TROY, MICHIGAN

HI-TECH FOR SALE
4,928 Square Feet Available



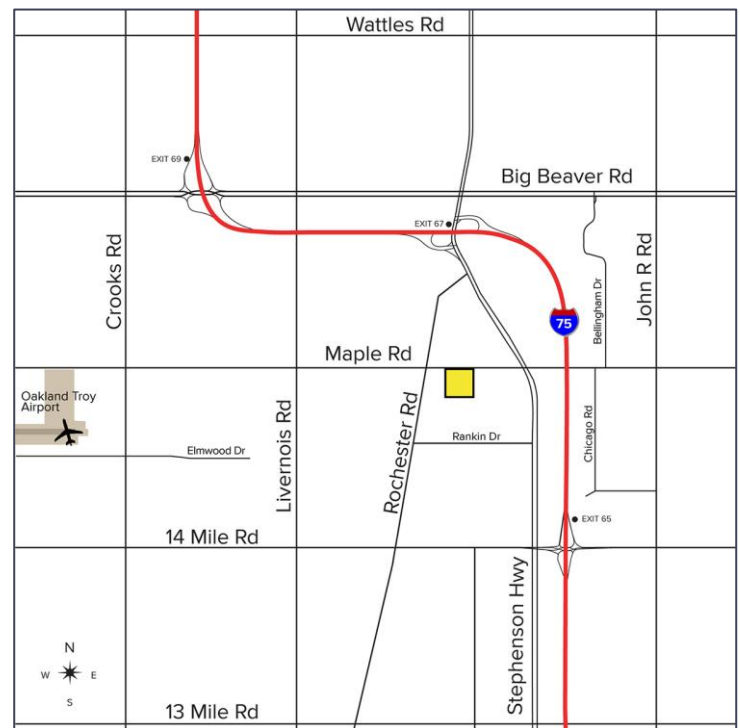
**SIGNATURE
ASSOCIATES**
KNOW SIGNATURE | KNOW RESULTS

MAIN ROAD FRONTAGE



PROPERTY FEATURES

- 4,928 available square feet
- 1,028 square feet of office space
- 12' - 17' clear height
- (2) 12x14 grade level doors
- 13 parking spaces
- Location just off I-75
- Zoned light manufacturing
- Fully air-conditioned
- Retail possible
- Asking Price: \$566,700.00 (\$115.00/sq. ft.)



For more information, please contact:

JOE BANYAI
(248) 948 0108
jbanyai@signatureassociates.com

BRUCE BAJA
(248) 799 3177
bbaja@signatureassociates.com

SIGNATURE ASSOCIATES
One Towne Square, Suite 1200
Southfield, MI 48076
www.signatureassociates.com

1040 E. Maple Road – Troy, Michigan

Hi-Tech For Sale

4,928
Square Feet
AVAILABLE

Aerial



For more information, please contact:

JOE BANYAI
(248) 948 0108

jbanyai@signatureassociates.com

BRUCE BAJA
(248) 799 3177

bbaja@signatureassociates.com

SIGNATURE ASSOCIATES
One Towne Square, Suite 1200
Southfield, MI 48076
www.signatureassociates.com