

JACKSONSHAW



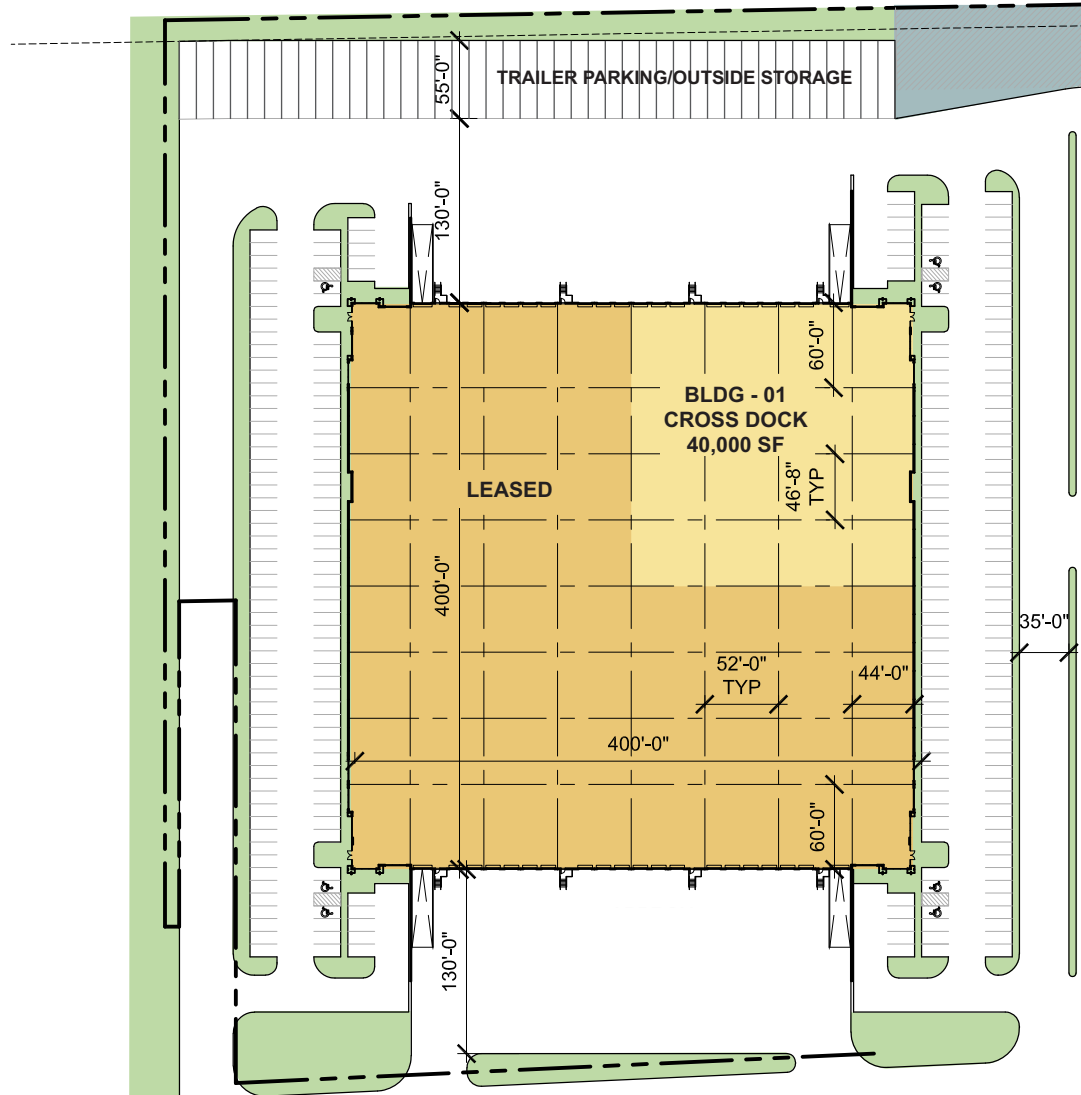
# PARC AIR 59

## BUILDING 1

18870 Eastex Freeway 59 | Humble, TX

<b>SQUARE FEET:</b>	160,000	<b>PARKING SPACES:</b>	59
<b>AVAILABLE SQUARE FEET:</b>	40,000	<b>TRUCK COURT:</b>	130' / 185'
<b>MINIMUM DIVISIBLE:</b>	40,000	<b>DOCK DOORS:</b>	9
<b>BLDG. DEPTH:</b>	400'	<b>TRAILER PARKING:</b>	21
<b>CLEAR HEIGHT:</b>	32'	<b>SPRINKLER SYSTEM:</b>	ESFR
<b>TYPICAL BAY:</b>	52' x 46' 8"	<b>CONFIGURATION:</b>	Cross Dock
<b>DRIVE-IN DOORS:</b>	1		





FOR LEASING INFORMATION



ALLISON BERGMANN  
allison.bergmann@cushwake.com  
713 963 2865

BEAU KALEEL  
beau.kaleel@cushwake.com  
713 963 2844

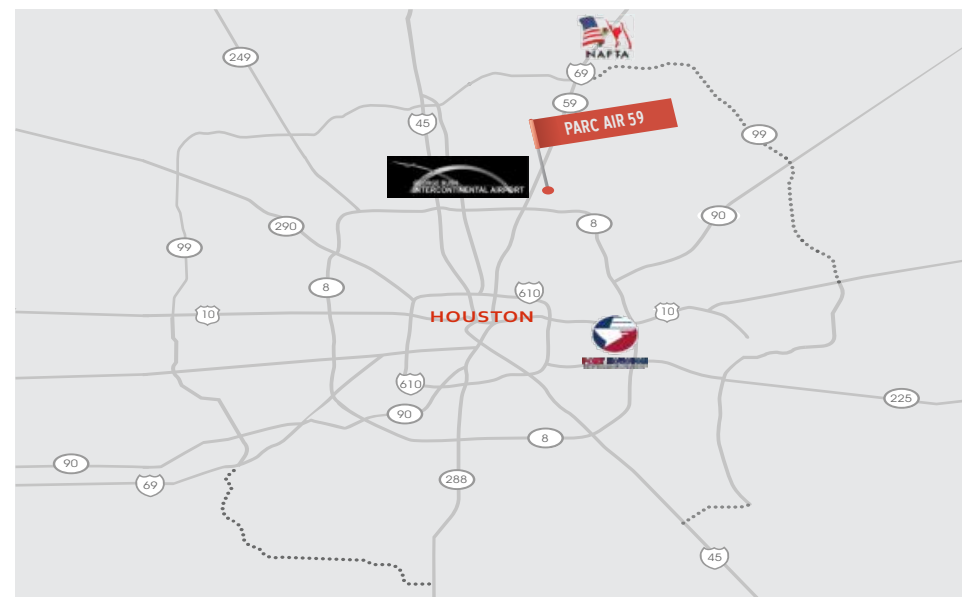


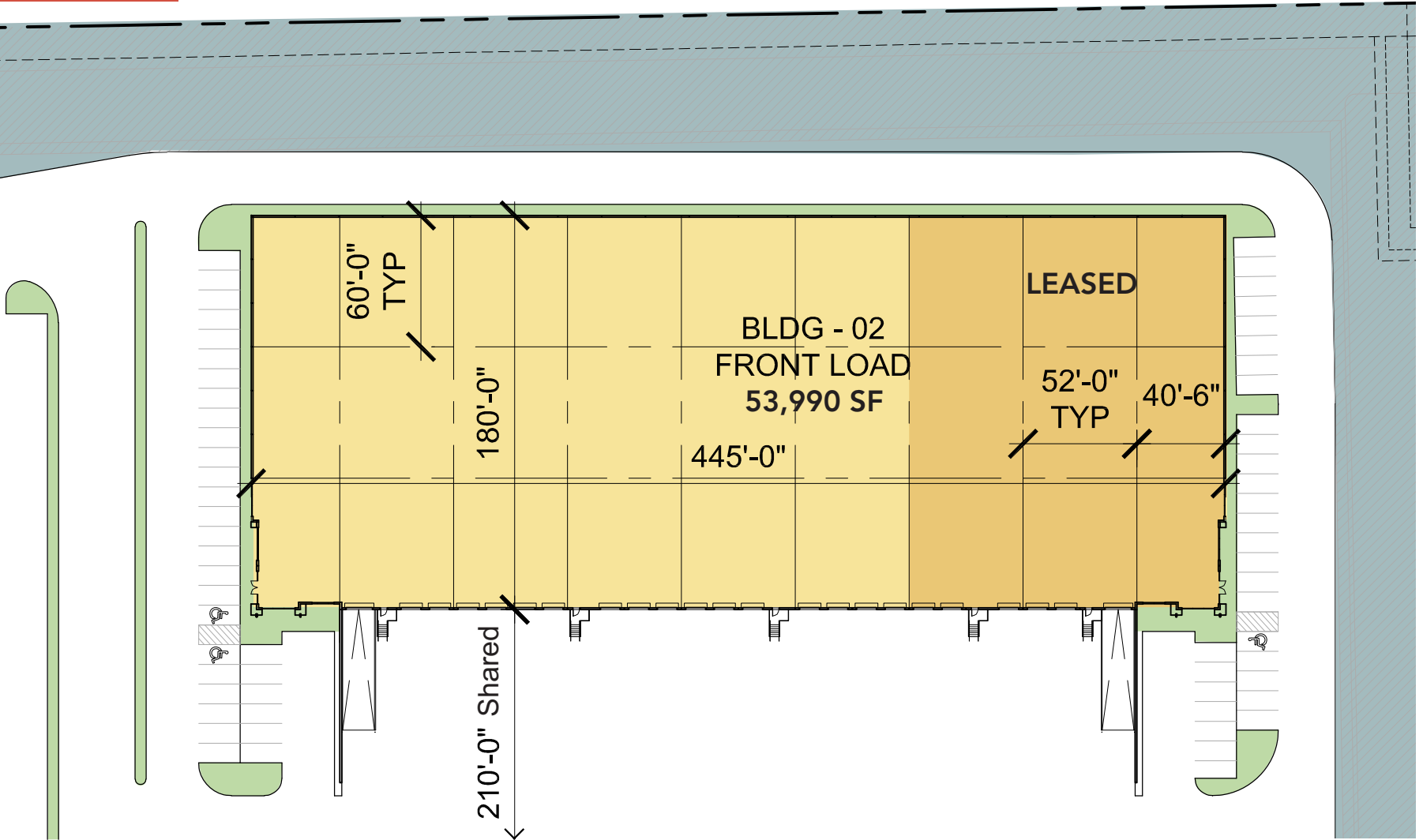
# PARC AIR 59

## BUILDING 2

18860 Eastex Freeway 59 | Humble, TX

<b>SQUARE FEET:</b>	80,000	<b>PARKING SPACES:</b>	59
<b>AVAILABLE SQUARE FEET:</b>	53,990	<b>TRUCK COURT:</b>	210' (Shared)
<b>MINIMUM DIVISIBLE:</b>	22,000	<b>DOCK DOORS:</b>	16
<b>BLDG. DEPTH:</b>	180'	<b>TRAILER PARKING:</b>	0
<b>CLEAR HEIGHT:</b>	28'	<b>SPRINKLER SYSTEM:</b>	ESFR
<b>TYPICAL BAY:</b>	52' x 60'	<b>CONFIGURATION:</b>	Front Load
<b>DRIVE-IN DOORS:</b>	1		





FOR LEASING INFORMATION



ALLISON BERGMANN  
allison.bergmann@cushwake.com  
713 963 2865

BEAU KALEEL  
beau.kaleel@cushwake.com  
713 963 2844

JACKSONSHAW

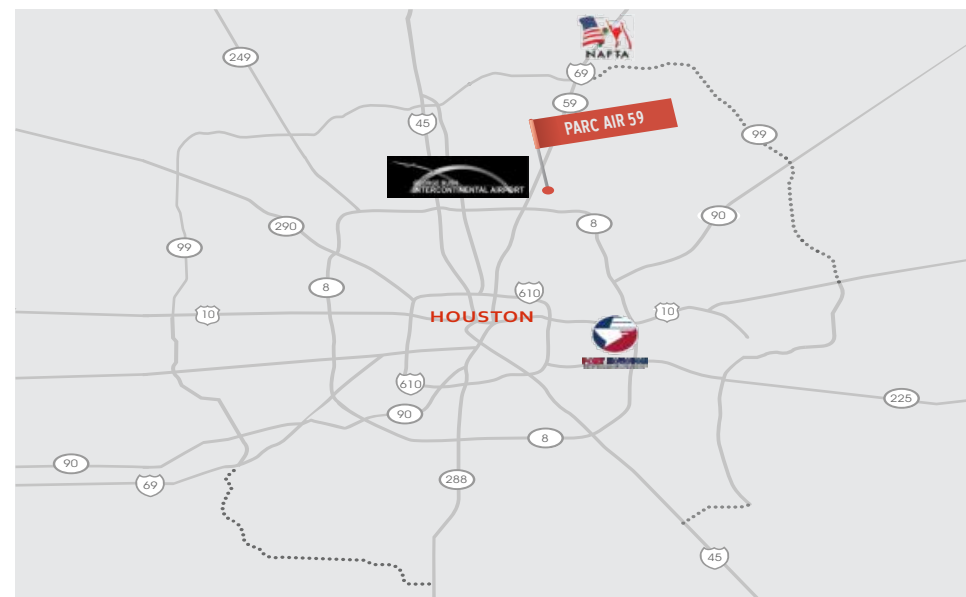


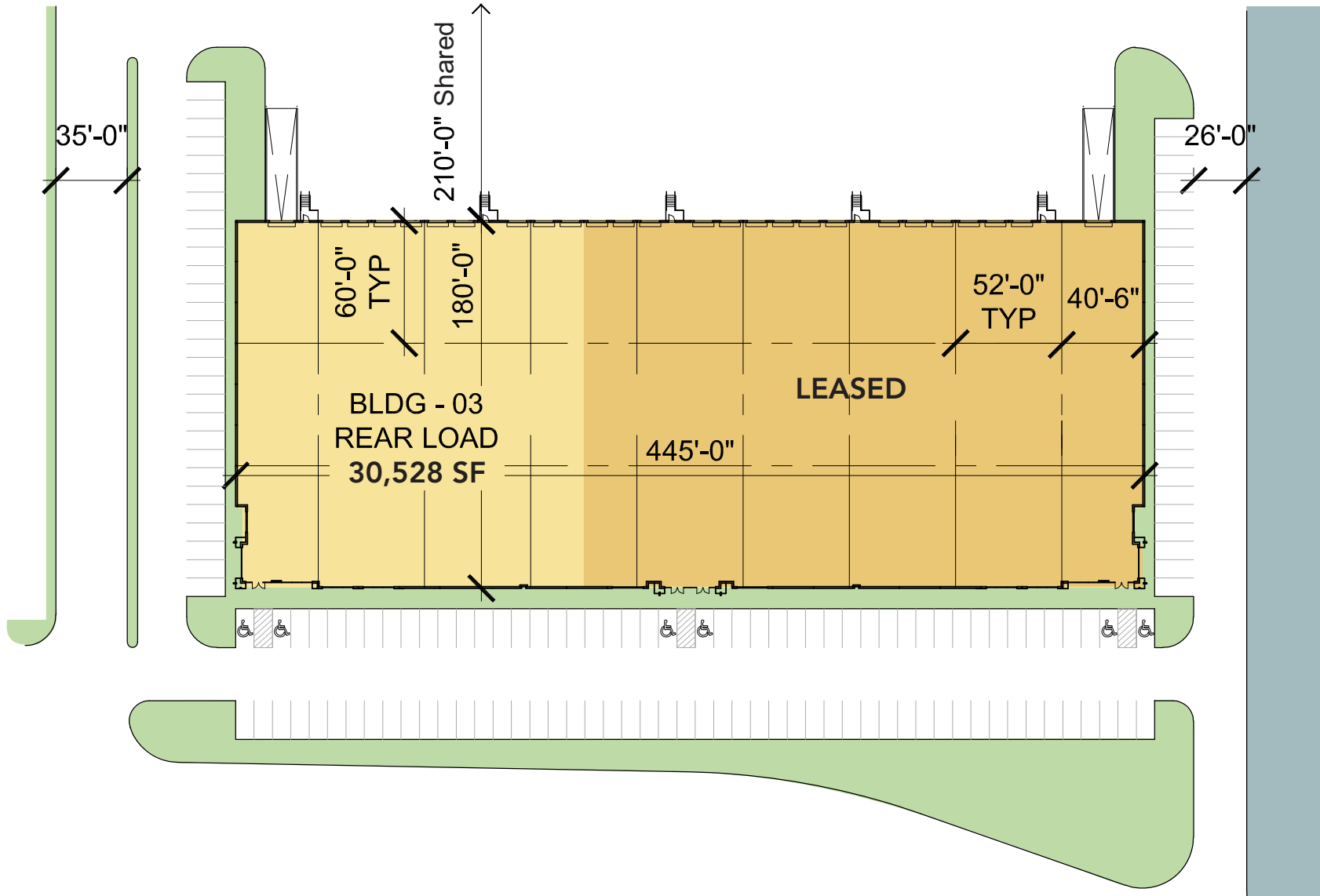
# PARC AIR 59

## BUILDING 3

18850 Eastex Freeway 59 | Humble, TX

<b>SQUARE FEET:</b>	80,000	<b>PARKING SPACES:</b>	78
<b>AVAILABLE SQUARE FEET:</b>	30,528	<b>TRUCK COURT:</b>	210' (Shared)
<b>MINIMUM DIVISIBLE:</b>	30,528	<b>DOCK DOORS:</b>	9
<b>BLDG. DEPTH:</b>	180'	<b>TRAILER PARKING:</b>	0
<b>CLEAR HEIGHT:</b>	28'	<b>SPRINKLER SYSTEM:</b>	ESFR
<b>TYPICAL BAY:</b>	52' x 60'	<b>CONFIGURATION:</b>	Rear Load
<b>DRIVE-IN DOORS:</b>	1		





FOR LEASING INFORMATION

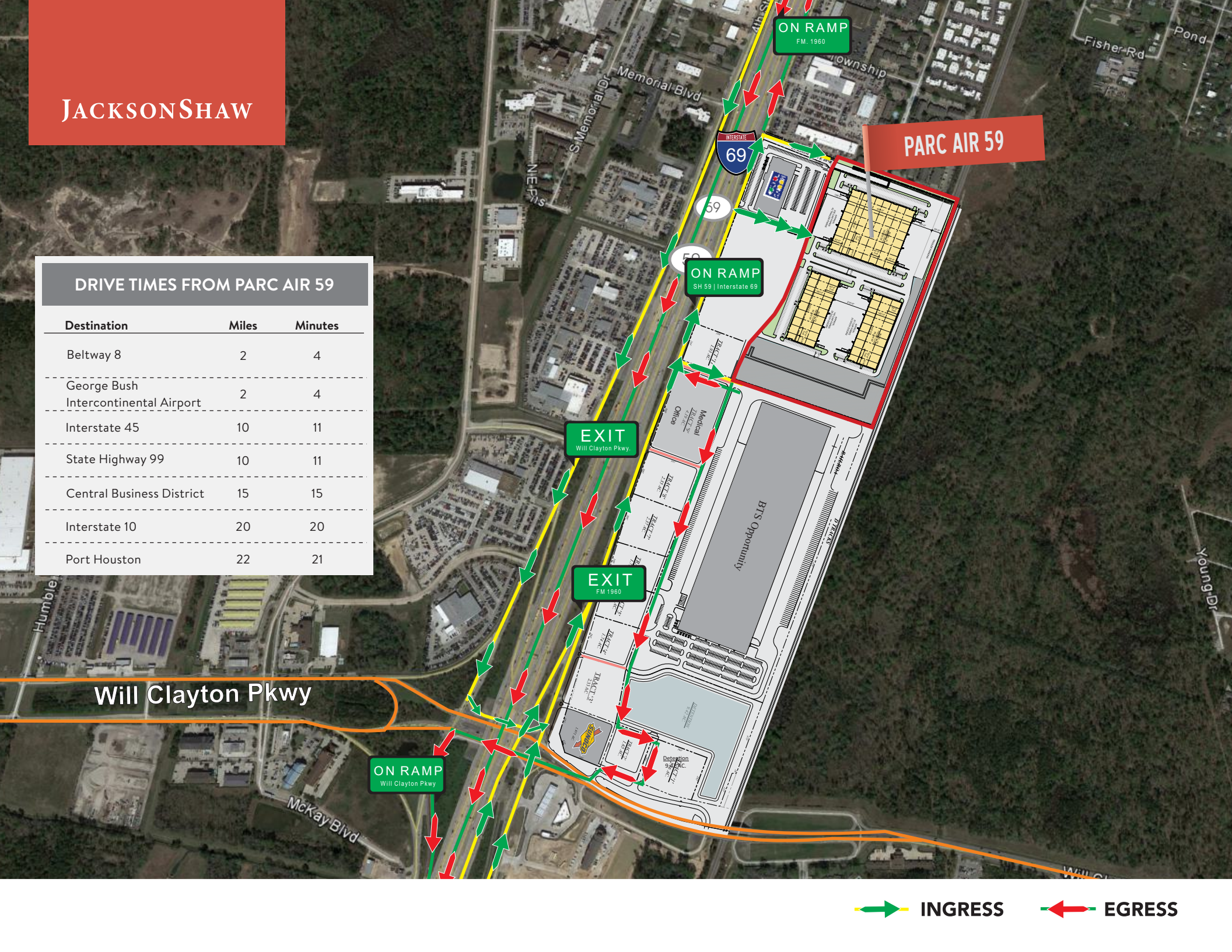


ALLISON BERGMANN  
allison.bergmann@cushwake.com  
713 963 2865

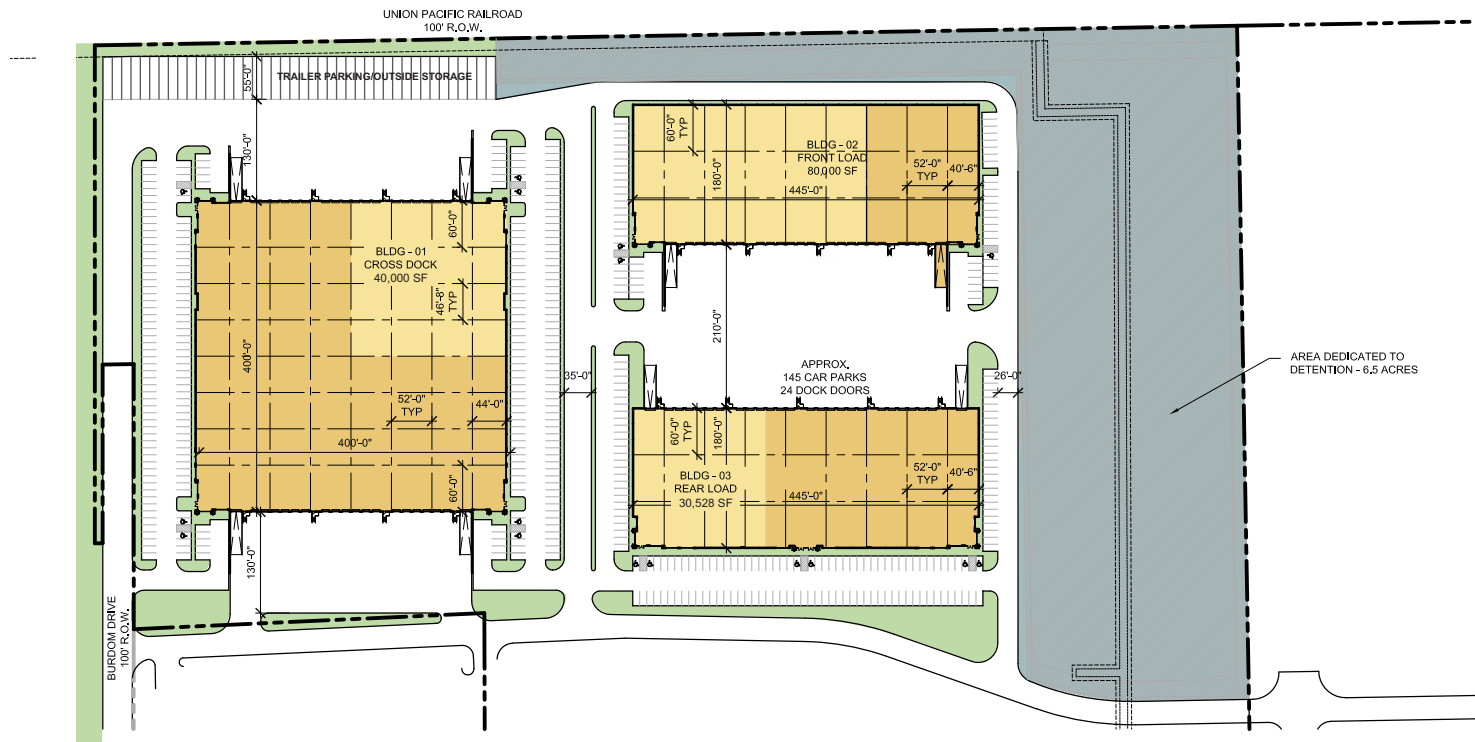
BEAU KALEEL  
beau.kaleel@cushwake.com  
713 963 2844

## DRIVE TIMES FROM PARC AIR 59

Destination	Miles	Minutes
Beltway 8	2	4
George Bush Intercontinental Airport	2	4
Interstate 45	10	11
State Highway 99	10	11
Central Business District	15	15
Interstate 10	20	20
Port Houston	22	21



Will Clayton Pkwy



<b>PARC AIR 59</b>	<b>BLDG. 1</b>	<b>BLDG. 2</b>	<b>BLDG. 3</b>	<b>TOTAL</b>
<b>BUILDING SIZE:</b>	160,000 SF	80,000 SF	80,000 SF	<b>320,000 SF</b>
<b>AVAILABLE SQUARE FEET:</b>	40,000 SF	53,990 SF	30,528 SF	<b>124,518 SF</b>
<b>BUILDING CONFIG:</b>	Cross Dock	Front Load	Rear Load	<b>19 Acres</b>
<b>DIMENSIONS:</b>	400' long x 400' deep	445' long x 180' deep	445' long x 180' deep	
<b>CLEAR HEIGHT:</b>	32'	28'	28'	
<b>FIRE PROTECTION:</b>	ESFR	ESFR	ESFR	
<b>TRUCK COURT:</b>	130'/185'	210' (shared)	210' (shared)	
<b>DOCK DOORS:</b>	9	16	9	
<b>DRIVE-IN DOORS:</b>	1	1	1	
<b>PARKING SPACES:</b>	59	57	59	
<b>TRAILER PARKING:</b>	21	0	0	

**FOR LEASING INFORMATION**



**ALLISON BERGMANN**  
 allison.bergmann@cushwake.com  
 713 963 2865

**BEAU KALEEL**  
 beau.kaleel@cushwake.com  
 713 963 2844



George Bush International Airport

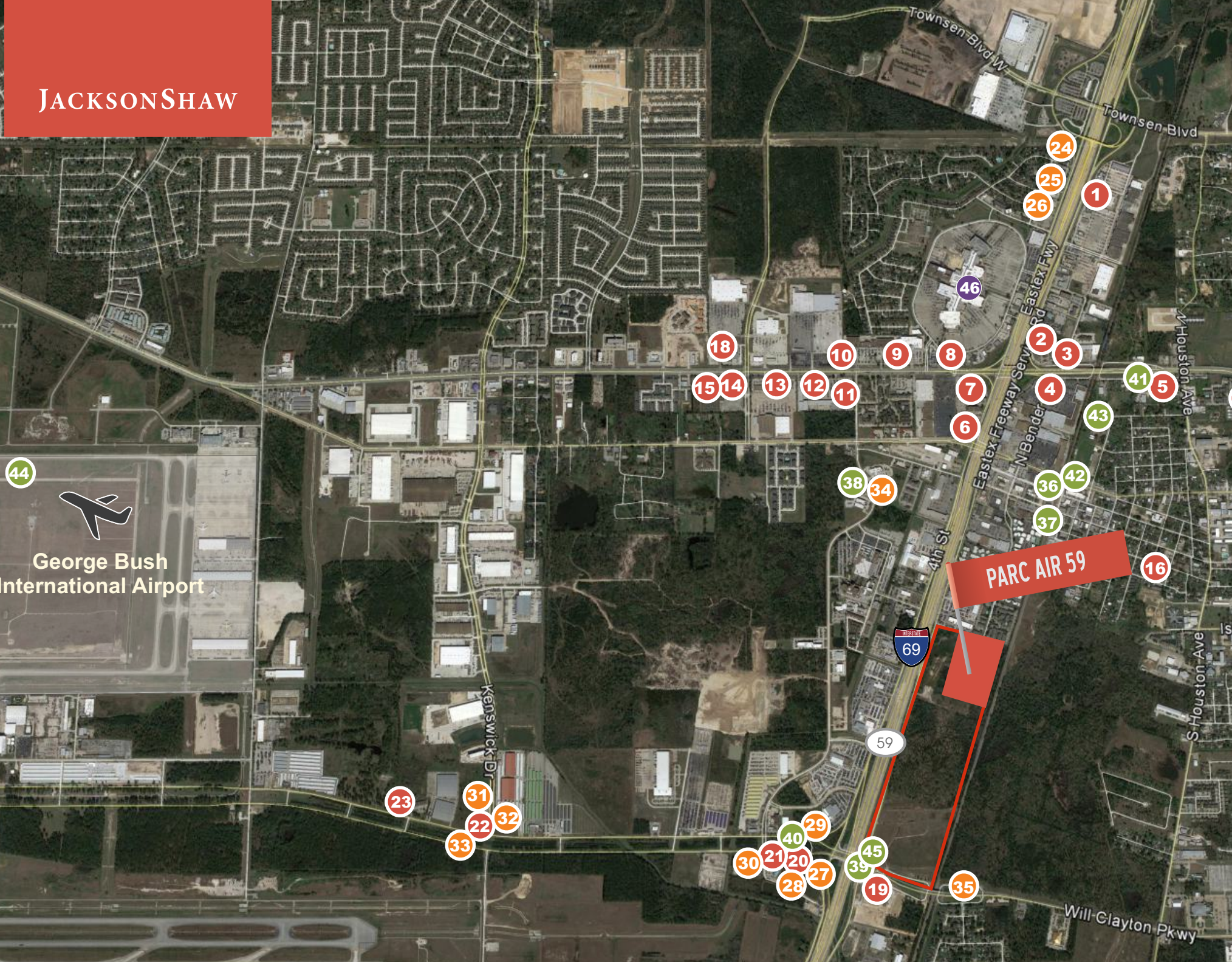


44

PARC AIR 59



59





## Restaurants

- 1 Red Lobster
- 2 Chili's
- 3 Souper Salad
- 4 The Curry House
- 5 Domino's Pizza
- 6 IHOP
- 7 Jason's Deli
- 8 Papacito's Cantina
- 9 Dickey's BBQ
- 10 Golden Corral
- 11 Olive Garden
- 12 Logan's Roadhouse
- 13 Cheddars
- 14 FreeBirds
- 15 Ghengis Grill
- 16 Chex Nous
- 17 Sonic
- 18 Brooklyn Pizzeria
- 19 Whataburger
- 20 Waffle House
- 21 Fox's Pizza Den
- 22 Burger King
- 23 Dolphin Restaurant



## Hotels

- 24 Country Inn & Suites
- 25 Fairfield Inn & Suites
- 26 Hampton Inn & Suites
- 27 Best Western
- 28 Sleep Inn & Suites
- 29 Baymont Inn & Suites
- 30 Holiday Inn Express
- 31 La Quinta
- 32 Holiday Inn
- 33 Ramada
- 34 Days Inn
- 35 Regency Inn & Suites



## Services

- 36 Valero
- 37 Exxon
- 38 Texaco
- 39 Shell
- 40 Shamrock
- 41 Service King
- 42 Star Cleaners
- 43 Planet Fitness
- 44 George Bush Intercontinental Airport
- 45 Sunoco



## Restaurants

- Casa Ole
- Chick-fil-A
- Chipotle
- Great Wraps Grill
- Marble Slab
- Sarku Japan



## Retail

- Dillard's
- JCPenny
- Macy's
- Sears



FOR LEASING INFORMATION



ALLISON BERGMANN  
 allison.bergmann@cushwake.com  
 713 963 2865

BEAU KALEEL  
 beau.kaleel@cushwake.com  
 713 963 2844