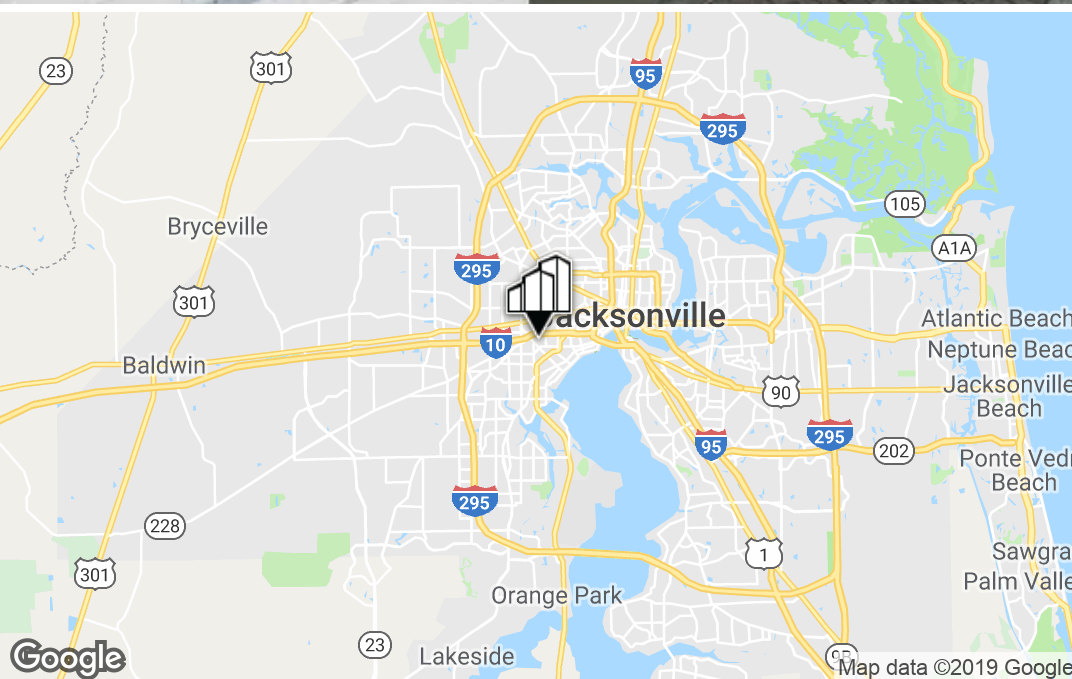


RETAIL PROPERTY FOR LEASE

935 & 937 EDGEWOOD AVE S
JACKSONVILLE, FL 32205



PRIMEREALTY



For More Information:

Eric Yi

Associate Director
904.930.4231

eyi@primerealtyinc.com

4237 Salisbury Road North, Building 2, Suite 212 | Jacksonville, FL 32216 | 904.352.1400

Office | Industrial | Retail | Multi-Family | Student Housing | Hotels

Information gathered from sources deemed to be reliable. Buyer shall not rely solely on this information and should check and verify.

Executive Summary



OFFERING SUMMARY

Lease Rate:	\$14.00 SF/yr (NNN)
Available SF:	900 - 1,200 SF
Lot Size:	1.04 Acres
Year Built:	1948
Building Size:	19,436 SF
Zoning:	CCG-1
Market:	Jacksonville
Sub-market:	Murray Hill

PROPERTY OVERVIEW

Retail space located in the historic Theater Block of Murray Hill with frontage on Edgewood Ave. Located in the same strip as El Jefe Tex Mex restaurant, opening summer 2018, and within walking distance to multiple established and up and coming restaurants such as Maple Street, B street, La Cena, and Moon River Pizza. Located in the rapidly growing Murray Hill/Riverside neighborhood which combines a true live-work-play destination, creating Jacksonville's newest retail and social atmosphere.

AVAILABLE SPACES

SPACE	LEASE RATE	SIZE (SF)
-------	------------	-----------

Eric Yi

Associate Director
904.930.4231
eyi@primerealtyinc.com

Retail Property For Lease | 935 & 937 Edgewood Ave S



Jacksonville, FL 32205



Eric Yi

Associate Director
904.930.4231
eyi@primerealtyinc.com

4237 Salisbury Road North, Building 2, Suite 212 | Jacksonville, FL 32216 | 904.352.1400
Office | Industrial | Retail | Multi-Family | StudentHousing | Hotels

Floor Plan - 935 Edgewood Avenue



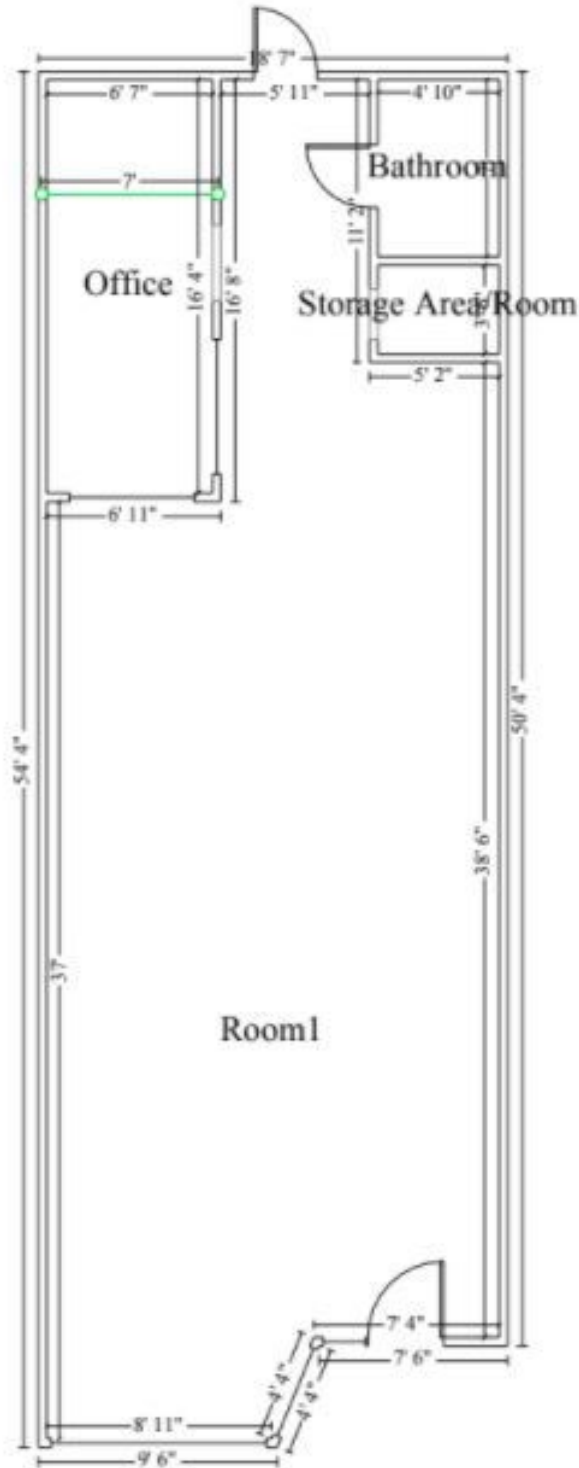
Eric Yi

Associate Director

904.930.4231

eyi@primerealtyinc.com

Floor Plan - 937 Edgewood Avenue



Eric Yi

Associate Director
904.930.4231
eyi@primerealtyinc.com

Retail Property For Lease | 935 & 937 Edgewood Ave S



Site Plan



Eric Yi

Associate Director

904.930.4231

eyi@primerealtyinc.com

4237 Salisbury Road North, Building 2, Suite 212 | Jacksonville, FL 32216 | 904.352.1400

Office | Industrial | Retail | Multi-Family | StudentHousing | Hotels