

FOR LEASE

# LAKESIDE AT COLLEGE PARK

8777

PURDUE ROAD

Indianapolis, IN 46268



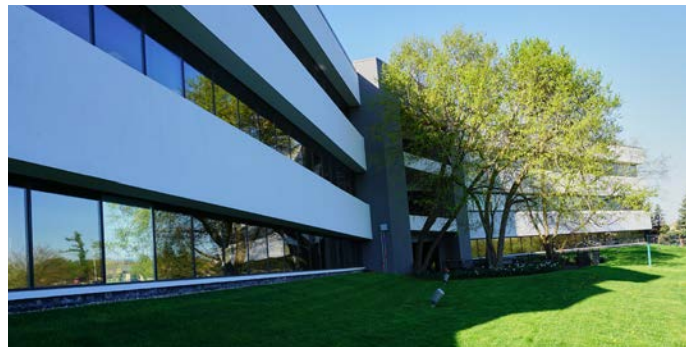
## PRIME OFFICE SPACE

Class B office on the prestigious north side.

- + Immediate access to I-465 and 5 minutes to I-65
- + Lakeside common area patio and second and third floor balconies
- + Abundant area amenities
- + On-site building conference room
- + Electronic security access
- + Monument signage available



Managed By:



[www.cbre.com/lcp](http://www.cbre.com/lcp)

**CBRE**



# FOR LEASE LAKESIDE AT COLLEGE PARK



## LAKESIDE AT COLLEGE PARK PRIME NORTHSIDE OFFICE PARK

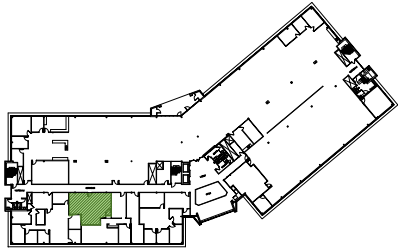
Nestled on the southern edge of a beautiful 25 acre lake, Lakeside at College Park provides its occupants with an unparalleled level of economic efficiency and quality without compromise.

College Park is surrounded by multiple retail, hotel and restaurant amenities. The park has immediate access to I-465 and is 5 minutes to I-65. Lakeside is just a 20 minute drive to the Indianapolis International Airport and Indianapolis' CBD district making the location an ideal spot for tenants.





LAKESIDE AT COLLEGE PARK CONFERENCE FACILITY



KEYPLAN - BLDG. CONF.  
NOT TO SCALE  
NORTH





FOR LEASE  
**LAKESIDE AT COLLEGE PARK**

**8777**  
**PURDUE ROAD**  
Indianapolis, IN 46268



**CONTACT US**

**CRYSTAL HOUSTON**

Vice President  
+1 317 269 1099  
crystal.houston@cbre.com

Managed By:



© 2019 CBRE, Inc. All rights reserved. This information has been obtained from sources believed reliable, but has not been verified for accuracy or completeness. Any projections, opinions, or estimates are subject to uncertainty. The information may not represent the current or future performance of the property. You and your advisors should conduct a careful, independent investigation of the property and verify all information. Any reliance on this information is solely at your own risk. CBRE and the CBRE logo are service marks of CBRE, Inc. and/or its affiliated or related companies in the United States and other countries. All other marks displayed on this document are the property of their respective owners. Photos herein are the property of their respective owners and use of these images without the express written consent of the owner is prohibited.

[www.cbre.us/lcp](http://www.cbre.us/lcp)

**CBRE**