

North Plains Precision Manufacturing Building

30780 NW Highland Court
North Plains, OR

13,800 SF

Freestanding building

Just minutes west of Intel,
Amazon, and TopGolf on
Bookwood Parkway

Grade loading

1200 Amps of 3 phase power

100% air conditioned

2,000 SF office

Ideal for manufacturing

Rent: \$10,000 NNN/per month



Location



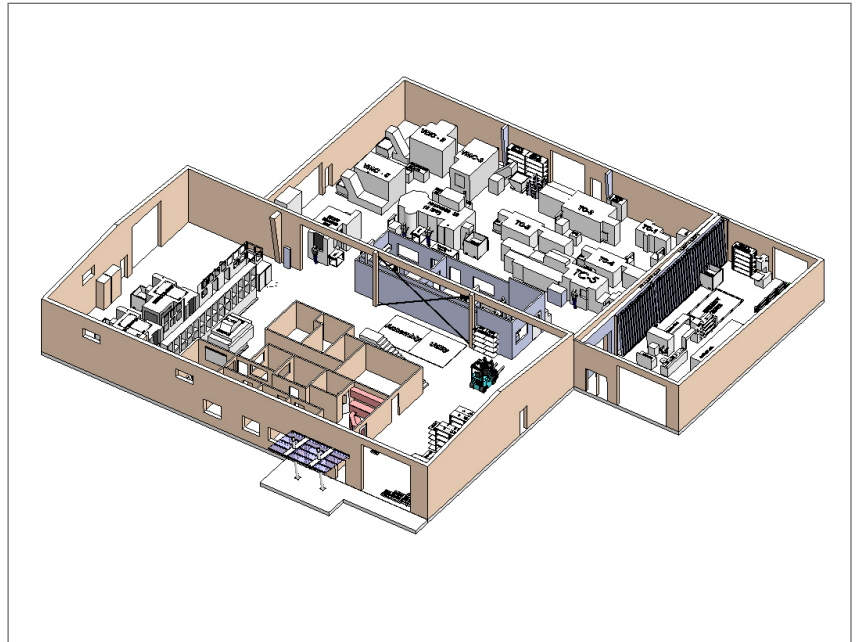
Contact

Cliff Finnell, SIOR

503.221.2295

cfinnell@kiddermathews.com

30780 NW Highland Court



Contact

Cliff Finnell, SIOR
503.221.2295
cfinnell@kiddermathews.com