

FOR LEASE

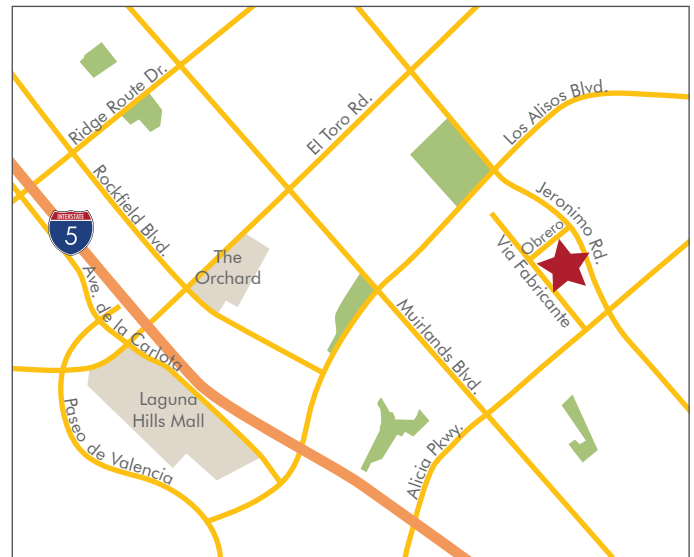
MULTI-TENANT INDUSTRIAL SPACE

MISSION VIEJO BUSINESS CENTER



FEATURES

- High-image business park
- Office & warehouse suites available
- Surface free parking, 2:1,000
- 100 amp power
- 14' clearance
- Prominent signage
- Ground level loading
- Major street frontage



For more information, contact:

GUY LAFERRARA

Senior Vice President

CaIDRE 01012355

949.790.3115

glaferrara@leeirvine.com

BROCK STRYKER

Senior Associate

CaIDRE 01928271

949.790.3131

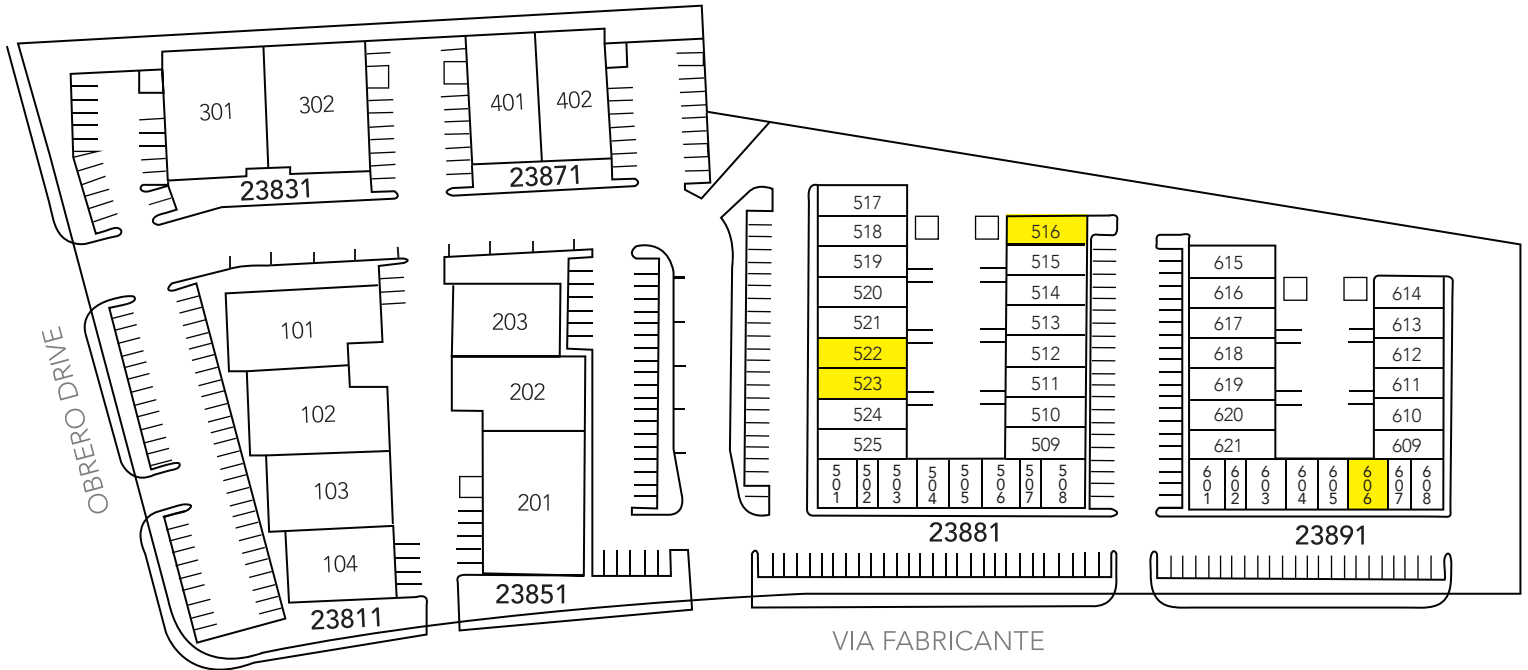
bstryker@leeirvine.com



FOR LEASE

MULTI-TENANT INDUSTRIAL SPACE

MISSION VIEJO
BUSINESS
CENTER



PROJECT AVAILABILITY

ADDRESS	SUITE	SIZE	RATE	OFFICE SIZE	COMMENTS
23881 Via Fabricante	516	1,085 SF	\$1.65 PSF	330 SF	Available Now
23881 Via Fabricante	522-523	2,648 SF	\$1.55 PSF	550 SF	Available Now
23891 Via Fabricante	606	919 SF	\$1.80 PSF	919 SF	Available Now

*CAM expenses estimated at \$0.20 PSF

GUY LAFERRARA

Senior Vice President

CalDRE 01012355

949.790.3115

glaferrara@leeirvine.com

BROCK STRYKER

Senior Associate

CalDRE 01928271

949.790.3131

bstryker@leeirvine.com

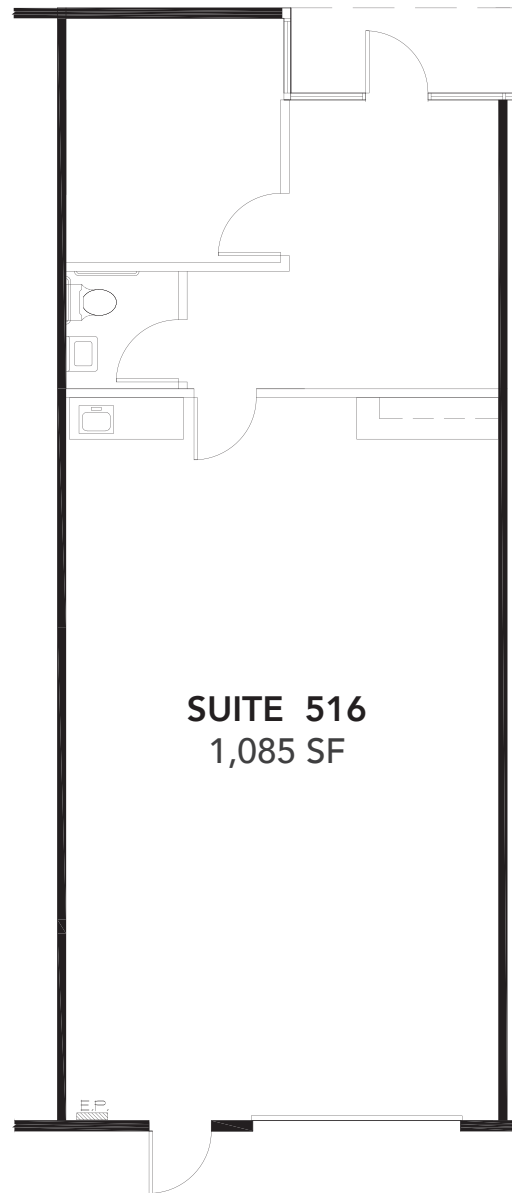


FOR LEASE

MULTI-TENANT INDUSTRIAL SPACE

MISSION VIEJO
BUSINESS
CENTER

23881 VIA FABRICANTE



BUILDING 23891



BUILDING 23881



BUILDING 23891

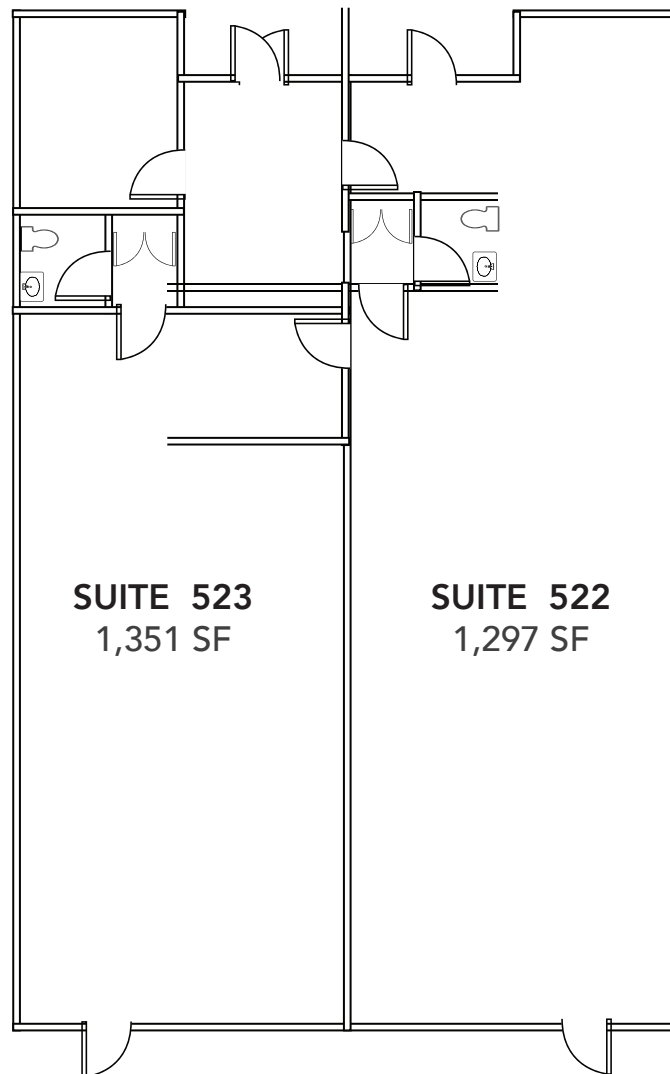


FOR LEASE

MULTI-TENANT INDUSTRIAL SPACE

MISSION VIEJO
BUSINESS
CENTER

23881 VIA FABRICANTE



BUILDING 23891



BUILDING 23881



BUILDING 23891

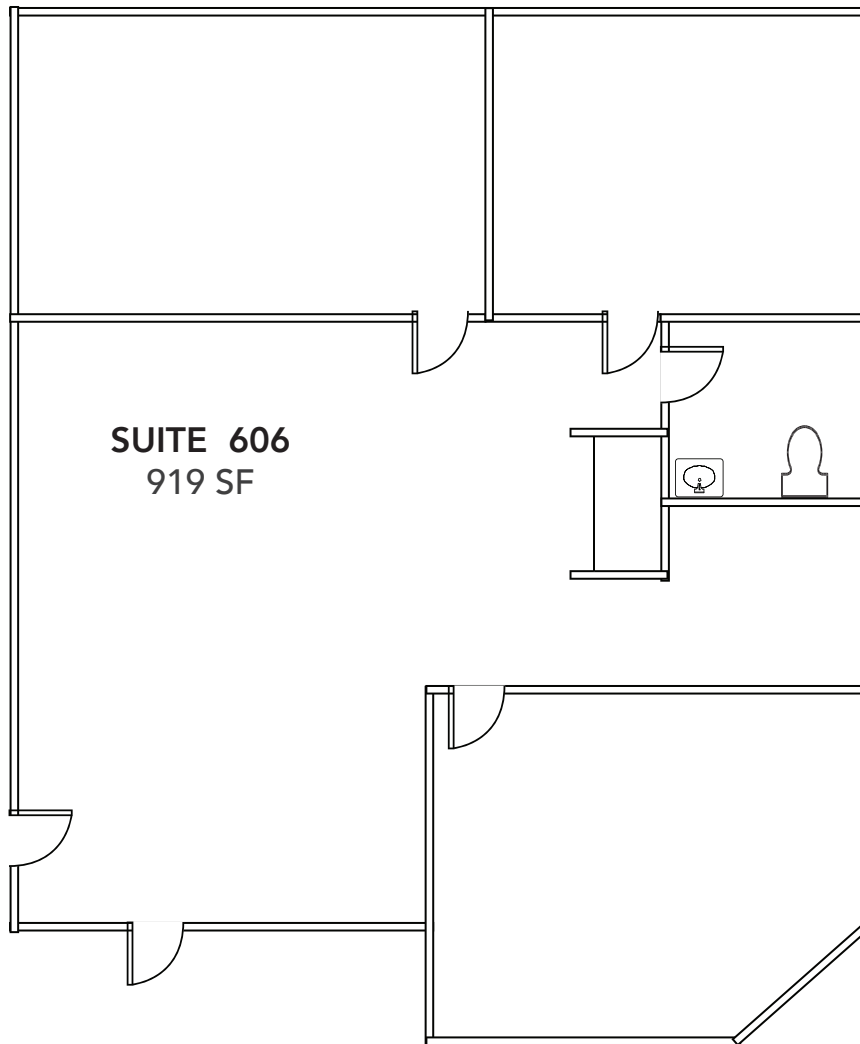


FOR LEASE

MULTI-TENANT INDUSTRIAL SPACE

MISSION VIEJO
BUSINESS
CENTER

23891 VIA FABRICANTE



BUILDING 23891



BUILDING 23881



BUILDING 23891

