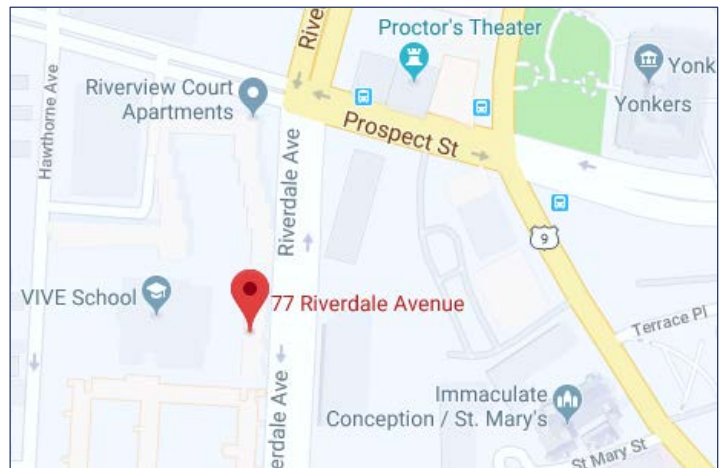




PRIME GROUND LEVEL SPACES AVAILABLE FOR LEASE IN MULTI-FAMILY BUILDING

792 Sq. Ft. to 814 Sq. Ft. | Call for Rental Details

- Building Features 454 Apartments with More than 1,000 Residents
- Across the Street from St. Joseph's Medical Center
- Retail, Office, Bank, Medical, and Urgent Care Uses Allowed
- Close to the Hudson River Waterfront
- On Busy Riverdale Avenue Connecting Yonkers to Riverdale
- Fantastic Signage Visibility

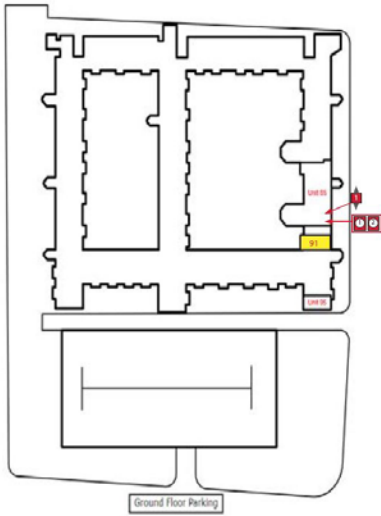


By Drive Time	5-Min	10-Min	15-Min
Average HH Income	\$61,511	\$79,774	\$95,023
Median HH Income	\$38,518	\$53,788	\$64,546
Population	52,363	131,791	297,757
Total Households	17,723	47,854	117,389
Retail Potential (000's)	\$452,467	\$1,612,648	\$4,765,215

Call Owner's
Exclusive Agent:

Haryn Intner 914-779-8200 x123 haryn@admiralrealestate.com

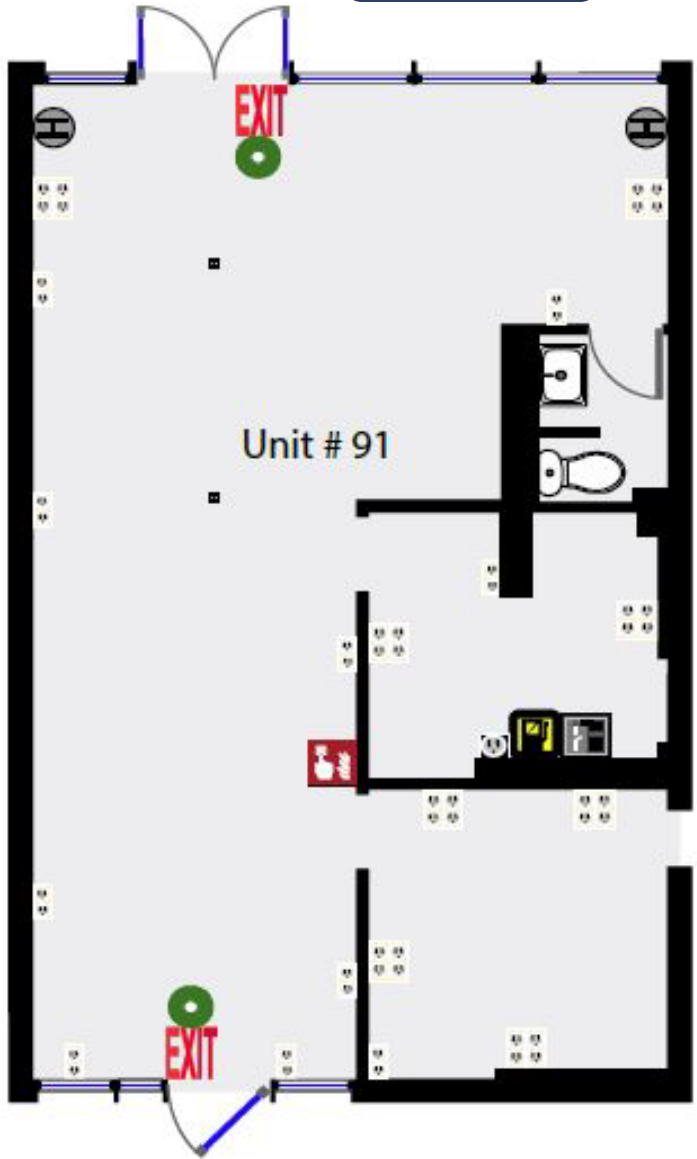
Brokers
Protected



UNIT #91

** Click [Here](#) for Virtual Tour **

792 SF



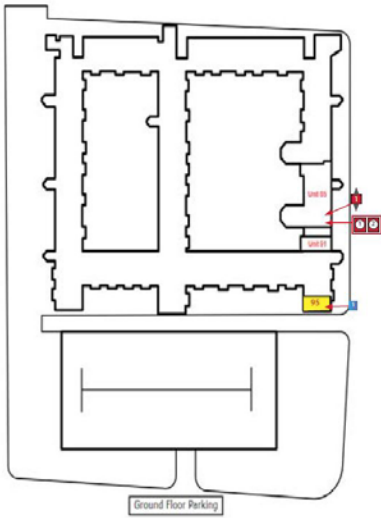
Call Owner's
Exclusive Agent:

Haryn Intner 914-779-8200 x123 haryn@admiralrealestate.com

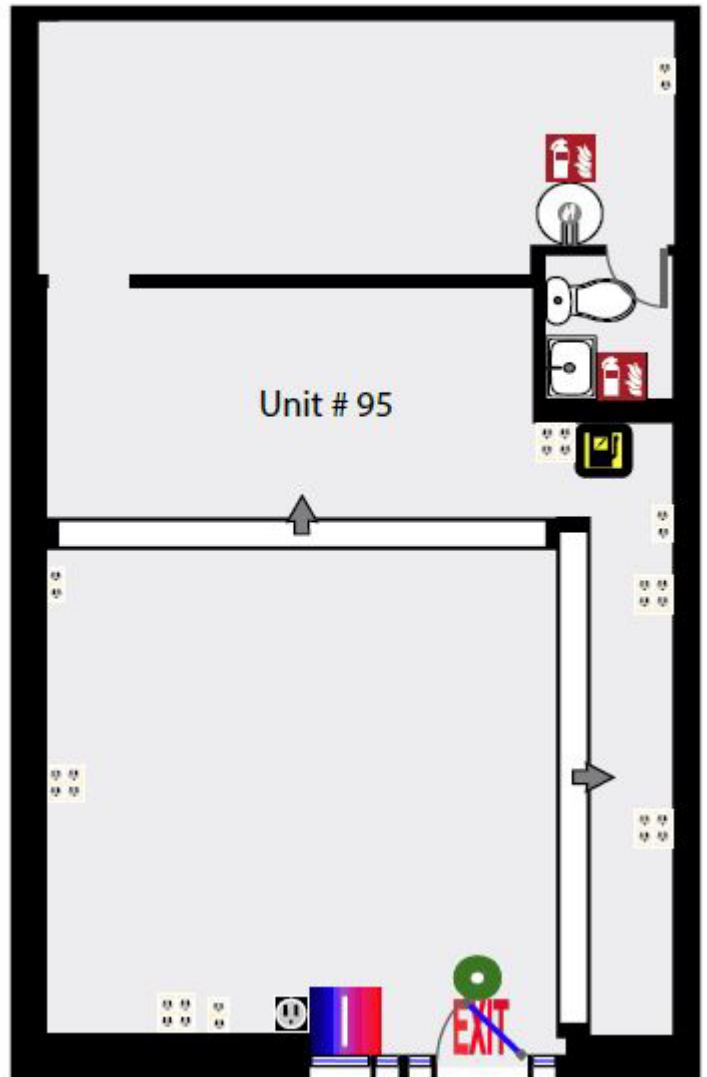
Brokers
Protected

UNIT #95

** Click [Here](#) for Virtual Tour **



814 SF



Call Owner's
Exclusive Agent:

Haryn Intner 914-779-8200 x123 haryn@admiralrealestate.com

Brokers
Protected