

LOHR BUILDING

725 Wood Street
Wilkesburg, PA
15221



Lohr Building Wilkesburg Borough

FOR LEASE

8,220 SF
On 3 Floors

Office/Retail



Greg Benckart
Associate
D 412.944.2137
greg.benckart@avisonyoung.com



WILDMAN
CHALMERS
DESIGN



LOHR BUILDING

725 Wood Street
Wilkesburg, PA
15221



- Built in the 1890s
- Full Renovation in 2019
- Located in Opportunity Zone
- Two blocks from East Busway
- Metered parking lot located behind building
- Cost Effective
- Available Suites include:
 - 2,680 SF - 1st Floor
 - 2,695 SF - 2nd Floor
 - 2,845 SF - 3rd Floor
- 7.5 miles from Pittsburgh CBD
- 4.7 miles from Oakland
- 1.1 miles from I-376



Greg Benckart
Associate
D 412.944.2137
greg.benckart@avisonyoung.com



LOHR BUILDING

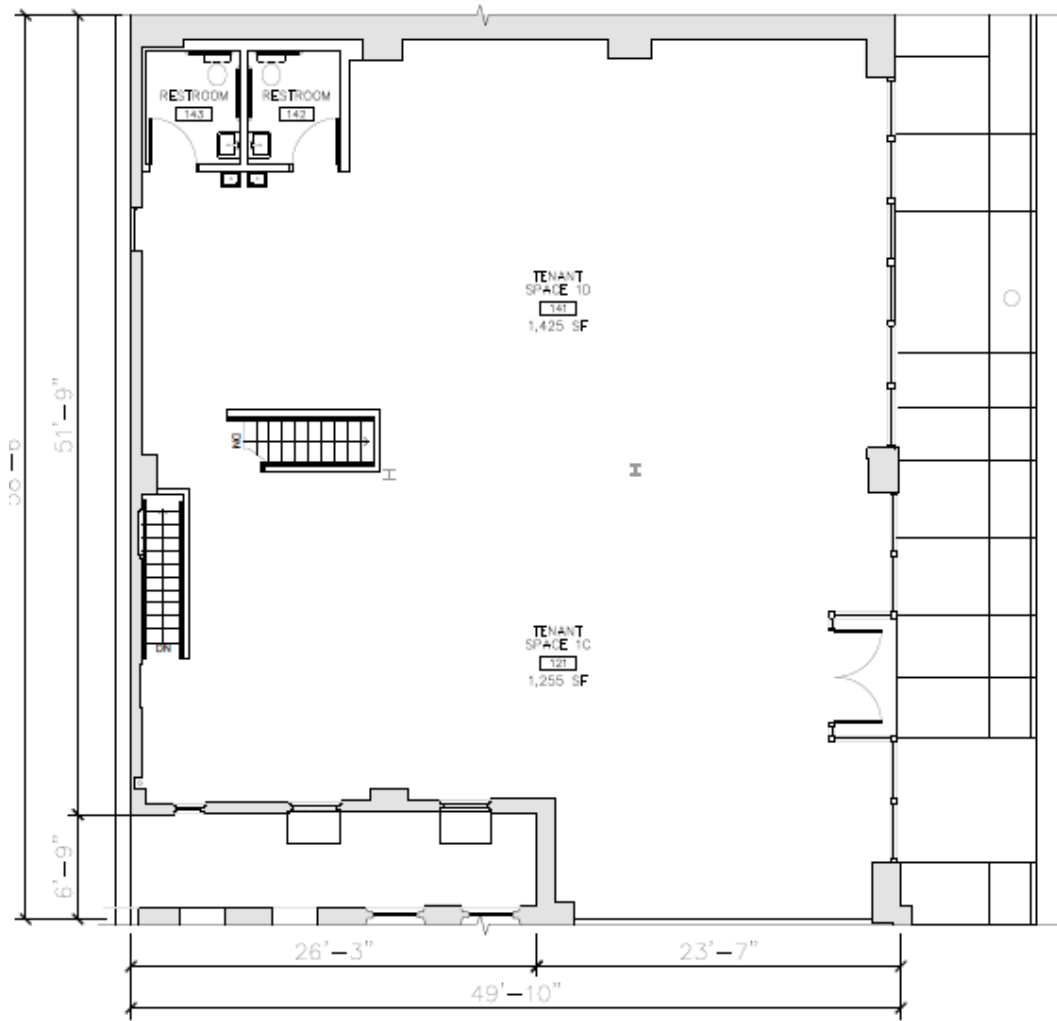
725 Wood Street
Wilkesburg, PA
15221



Greg Benckart
Associate
D 412.944.2137
greg.benckart@avisonyoung.com



Lohr Building Wilkesburg Borough



1 FIRST FLOOR PLAN TOTAL RENTABLE AREA: 2,680 SF



LOHR BUILDING

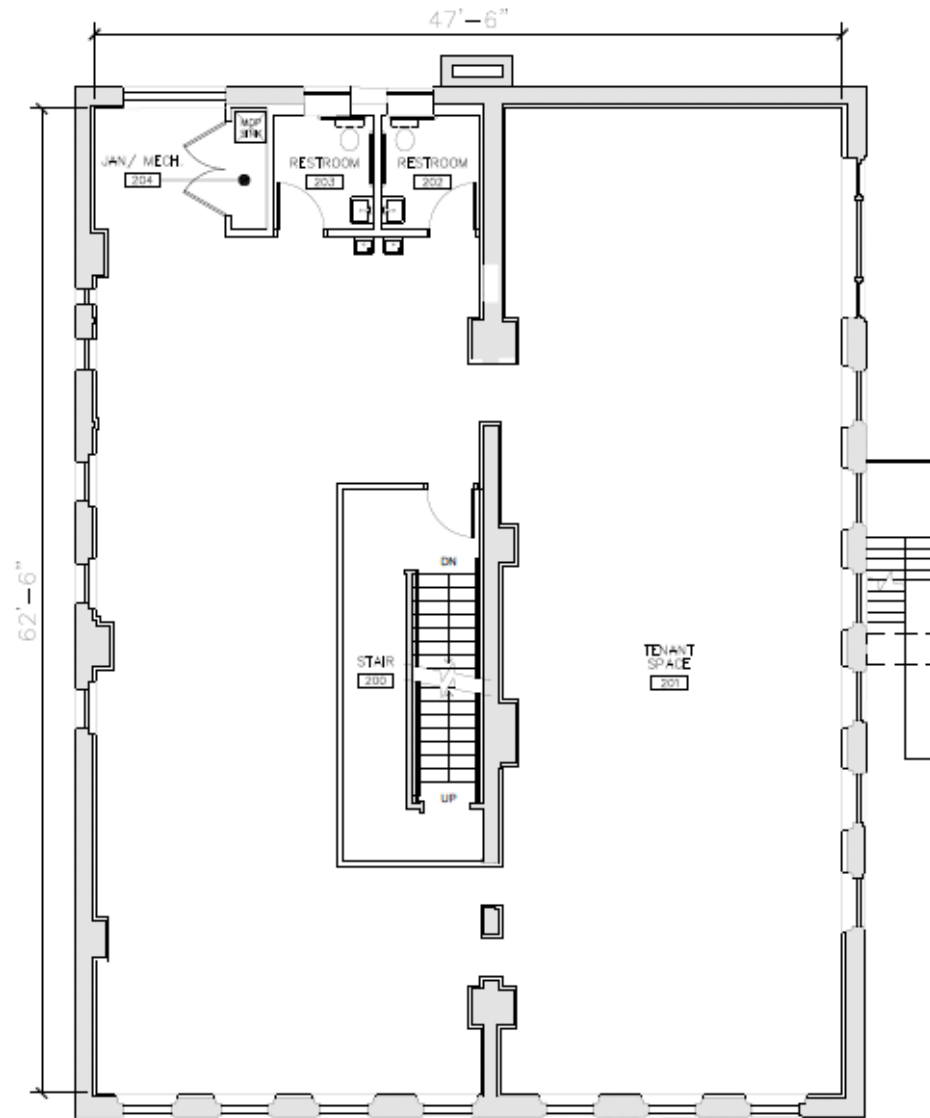
725 Wood Street
Wilkesburg, PA
15221



Greg Benckart
Associate
D 412.944.2137
greg.benckart@avisonyoung.com



Lohr Building Wilkesburg Borough



1 SECOND FLOOR PLAN

TOTAL RENTABLE AREA: 2,695 SF



LOHR BUILDING

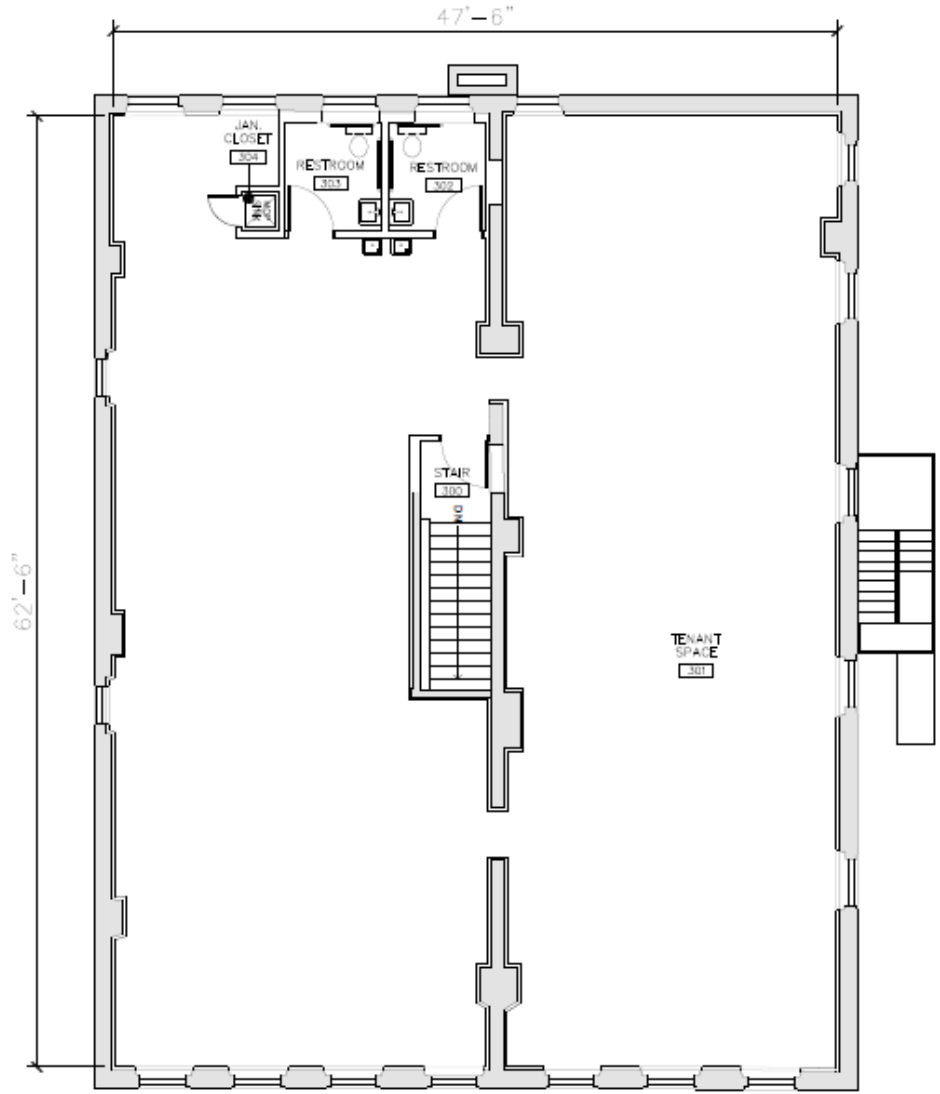
725 Wood Street
Wilkesburg, PA
15221



Greg Benckart
Associate
D 412.944.2137
greg.benckart@avisonyoung.com



Lohr Building Wilkesburg Borough



1 THIRD FLOOR PLAN TOTAL RENTABLE AREA: 2,845 SF

