



408 GREENWICH STREET

NORTHWEST CORNER OF HUBERT & GREENWICH

2nd Floor: **4,700 RSF** | Term: **Negotiable** | Possession: **30 Days** | Asking Rent: **Please Inquire**





2ND FLOOR IS AVAILABLE **FOR SALE OR FOR LEASE**

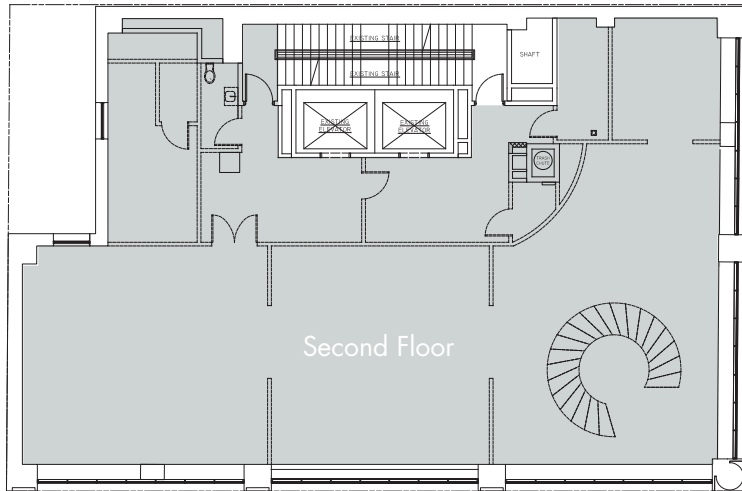
NEIGHBORING RETAILERS

- Sweetgreen
- Citigroup HQ
- Flywheel
- Juice Press
- DigInn
- Wisefish Poke
- Sushi Azabu
- Wichcraft
- The Greenwich Hotel
- Wolfgang's Steakhouse
- The Greek
- Yoga Vida
- Verve Wine Store
- Yves

FEATURES

- Unique corner with a commanding presence overlooking Citigroup's Global HQ
- New construction designed by Morris Adjmi
- Terrific pedestrian traffic
- Light food users and cafes considered





Christopher Owles

212.604.9002

chris@sinvin.com

Randy Kornblatt

646.673.8772

randy@sinvin.com

SINVIN
COMMERCIAL REAL ESTATE & ADVISORY



408 GREENWICH STREET

NORTHWEST CORNER OF HUBERT & GREENWICH



408

VERVE WINE



JACK ERWIN

HUDSON WINE & SPIRITS

ASPEX

LAIGHT STREET

LAIGHT STREET

HOLLAND TUNNEL

HUBERT STREET

sweetgreen

WOLFGANG'S STEAKHOUSE

Kaffe 1668



wework

THE SKYLOFT CONDOMINIUM



ABHAYA

IL MATTONE

ST. JOHN'S PARK

BEACH STREET

wichcraft

VALLEY



EDON MANOR

YVES

SMITH & MILLS



MR CHOW

HUDSON STREET

ERICSSON STREET

THE LITTLE GYM

TRIBECA COMMUNITY SCHOOL

THE GREENWICH HOTEL
LOCANDA VERDE

ISSEY MIYAKE

TRIBECA FILM CENTER



kataoka
jewelry and objets d'art

CHRISTINA DOS SANTOS

OTTE

NORTH MOORE STREET

BUBBY'S

ESPASSO

LOTUS SALON

WALKER'S

rag & bone

TRIBECA MED SPA

GIRELLO



URBANARCHAEOLOGY



GOTAN

TERRA

BENVENUTO CAFE
TRIBECA TAP HOUSE
AMERICAN CUT
IL MULINO

SHINOLA

STONE & STRAND

THE SMILE

TAMARIND

THIERRY W. DESPONT GALLERY (SOON)

THOM BROWNE.

PATRON OF THE NEW



MAISON KAYSER

JENNI KAYNE

1