

REAL
ESTATE
DEVELOPMENT
PARTNERS

FOR SALE



CONTACT
RED Partners

ROB HORD
rob@redpart.com

OFFICE: 704.338-1758
FAX: 704.333.7993

www.redpart.com



Every effort has been made to ensure the accuracy of the information presented but no liability is assumed for errors or omissions. This offering is subject to prior sale, lease, change or withdrawal without prior notice and approval of owner.

DESCRIPTION: Corner parcel located in South Charlotte on one of the City's dominant streets. Premier infill location suited for a higher density development.

ADDRESS: 6633 Providence Road
Charlotte, NC 28226

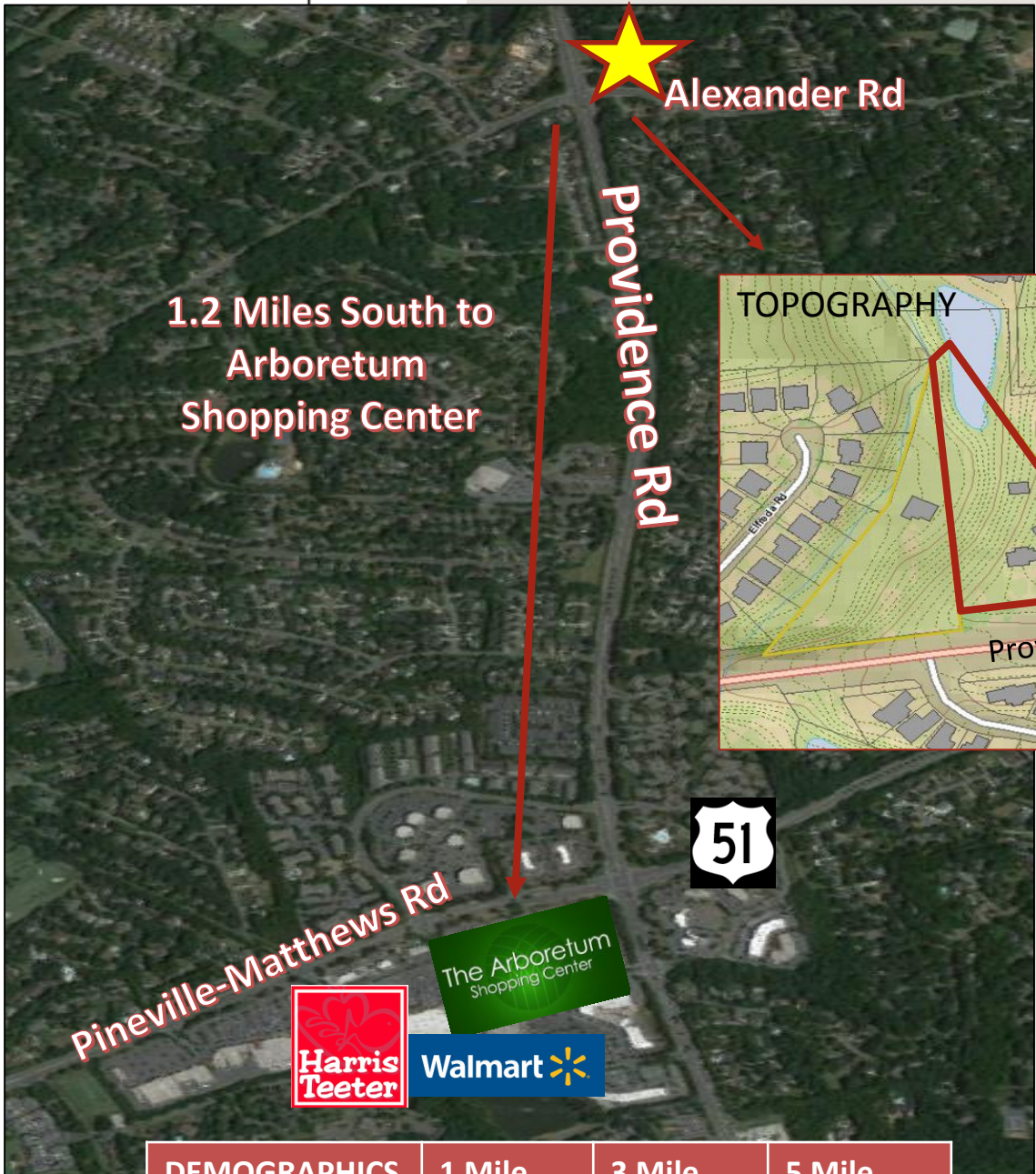
PARCEL ID: 21337101

LOT SIZE: +/- 3.75 acres

SALES PRICE: \$2,125,000

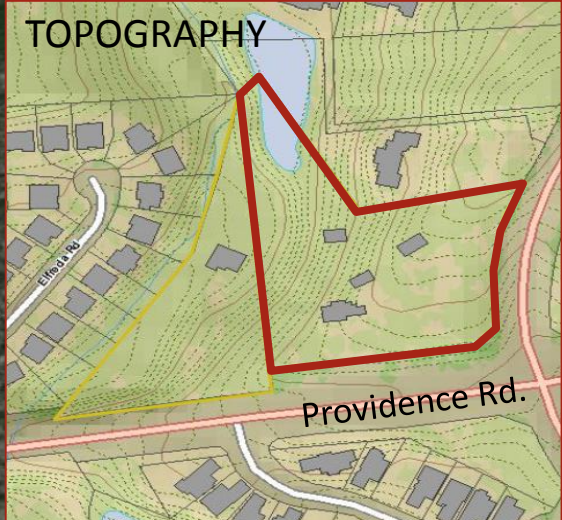
ZONING: R3 – Will sell subject to rezoning.

FOR SALE



1.2 Miles South to Arboretum Shopping Center

Providence Rd



Pineville-Matthews Rd

The Arboretum Shopping Center



DEMOGRAPHICS	1 Mile Radius	3 Mile Radius	5 Mile Radius
2016 Est. Population	10,544	69,762	203,567
Average Household Income	\$120,078	\$121,696	\$111,597

Every effort has been made to ensure the accuracy of the information presented but no liability is assumed for errors or omissions. This offering is subject to prior sale, lease, change or withdrawal without prior notice and approval of owner.