

FOR SUBLEASE

# OFFICE SUBLEASE

9 MONROE PARKWAY

Lake Oswego, OR 97035



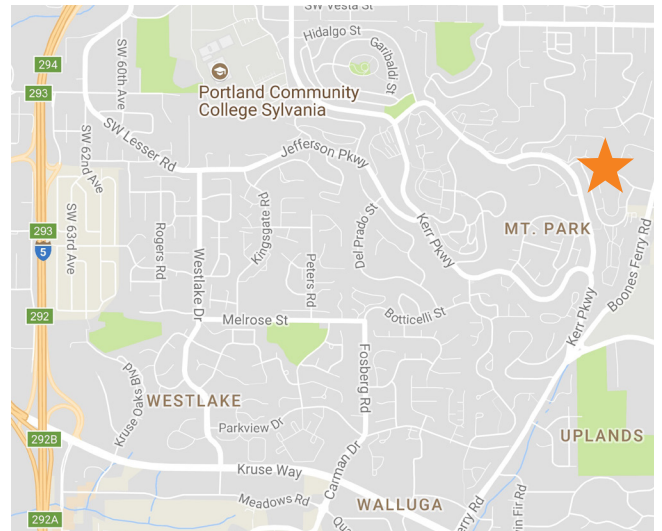
## AVAILABLE SPACE

- + Second floor: approx 2,784 - 3,406 RSF
- \$16-\$18/SF Full Service



## BUILDING FEATURES & AMENITIES

- + Sublease available through August 2022
- + Parking: 3.8/1,000 SF
- + Men's and women's shower facilities
- + Just north of Kruse Way



## CONTACT US

### JAN BOTTCHER

Senior Vice President  
+1 503 221 4809  
jan.bottcher@cbre.com

1300 SW Fifth Avenue  
Suite 3000  
Portland, OR 97201  
Broker is licensed in OR & WA

[www.cbre.us/portland](http://www.cbre.us/portland)

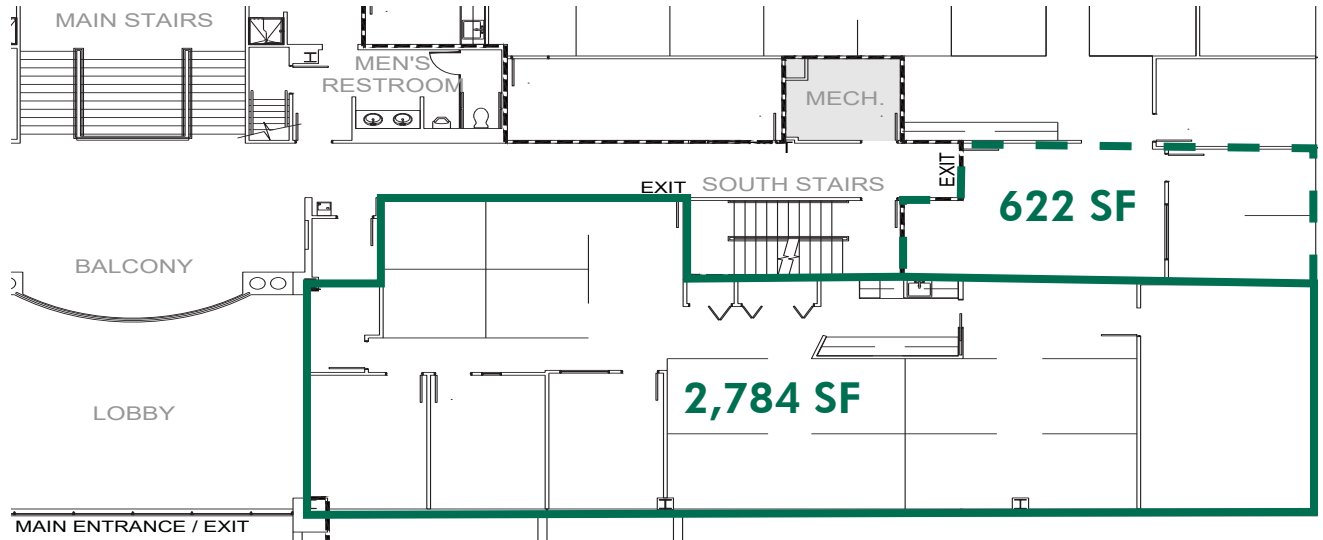
**CBRE**

# FOR SUBLEASE OFFICE SUBLEASE

9  
**MONROE PARKWAY**  
Lake Oswego, OR 97035



## SECOND FLOOR

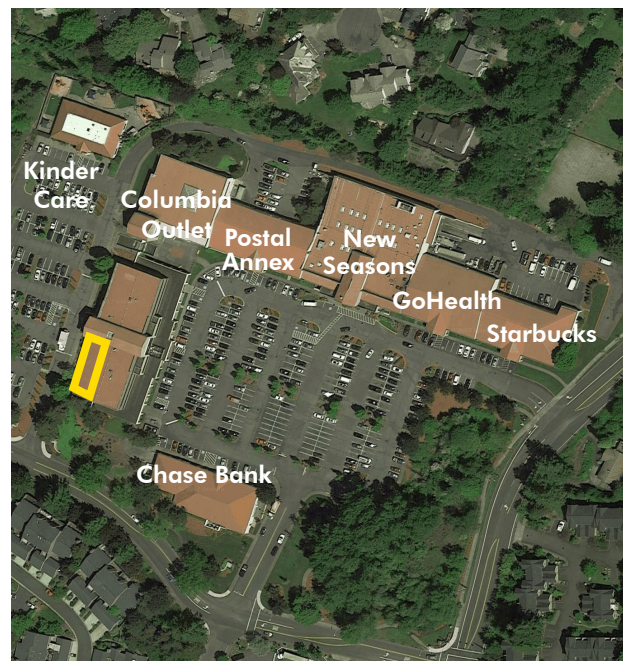


## PROPERTY AMENITIES

Quality office property in the retail and amenity rich Mountain Park Neighborhood:

Improve your work life balance:

- + New Seasons
- + KinderCare
- + Legacy GoHealth
- + DMV
- + Veterinary
- + Postal Annex
- + Salons
- + Columbia Outlet
- + Dry Cleaners
- + Chase Bank
- + and many more



© 2018 CBRE, Inc. All rights reserved. This information has been obtained from sources believed reliable, but has not been verified for accuracy or completeness. You should conduct a careful, independent investigation of the property and verify all information. Any reliance on this information is solely at your own risk. CBRE and the CBRE logo are service marks of CBRE, Inc. and/or its affiliated or related companies in the United States and other countries. All other marks displayed on this document are the property of their respective owners.