

# FULLER COMMERCIAL CENTER

1367, 1387 N MELBA CT | 1368, 1388 N LELAND CT | GILBERT, AZ 85233

## INDUSTRIAL LAND FOR SALE

Town of  
**GILBERT**

**BEST**

Place to Raise a Family  
– Niche.com, 2018

**#1**

Most Prosperous City in the Nation  
– Economic Innovation Group, 2017

**5th**

Best City to Find a Job in the U.S.  
– WalletHub, 2018

### Property Details

- **±2.8 Acres (±122,181 SF)**
- Zoned: L-1, Town of Gilbert
- No Onsite Water Retention Required
- Hard to Find Improved Industrial Land
- Immediate US-60 Fwy Access
- Located in Gilbert Labor Pool
- Close Proximity to Multiple Restaurants & Shopping

### Demographics

	1 Mi	3 Mi
Population	7,007	149,282
Households	2,478	51,147
Median HHI	\$80,471	\$55,760

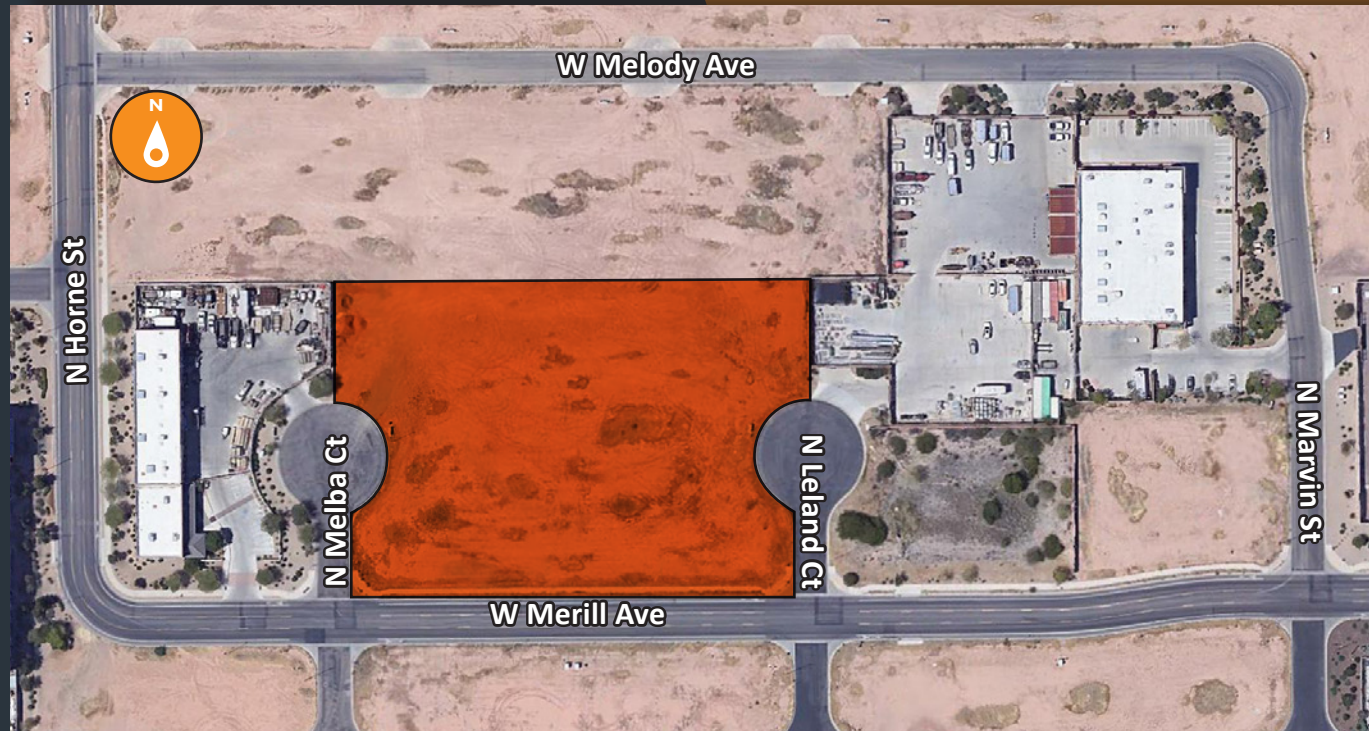
### Utilities

Power: SRP

Water: Town of Gilbert

Sewer: Town of Gilbert

Cable & Telephone Ready



**COMMERCIAL PROPERTIES INC.**

Locally Owned. Globally Connected. CGPAC  
INTERNATIONAL

TEMPE: 2323 W. University Drive, Tempe, AZ 85281 | 480.966.2301  
SCOTTSDALE: 8777 N. Gainey Center Dr., Suite 245, Scottsdale, AZ 85258 | www.cpiaz.com

Leroy Breinholt

D 480.966.6593

M 602.377.4687

lbreinholt@cpiaz.com

Eric Jones

D 480.966.8671

M 602.291.9400

ejones@cpiaz.com



# FULLER COMMERCIAL CENTER

## Location & Amenities

