

# FOR LEASE



**AVAILABLE 1,000 SF - 1,320 SF +/-**

**PREMIUM Office Spaces Second and Third Floors**

SPACIOUS OFFICE/MEDICAL/RETAIL

232 GOODMAN ROAD W · SOUTHAVEN, MS 38671

Available SF: 1,000 - 1,320  
Lease Rate: \$22-\$24  
Building Class: A  
Building SF: 21,042  
Land: 1.35 Acres  
Type: Commercial  
Zoning: C-4



**RHODES THOMPSON**  
Commercial Agent  
(662) 892-4000  
rhodes@partners-one.com  
Mississippi

Main Office:  
(901) 286-6200

| Suite | Rate        | Size  | Type       | Use    | Condition |
|-------|-------------|-------|------------|--------|-----------|
| 200   | \$2,400 /mo | 1,320 | Gross/Full | Office | Excellent |
| 303   | \$1,950 /mo | 1,056 | Gross/Full | Office | Excellent |
| 305-  | \$1,950 /mo | 999   | Gross/Full | Office | Excellent |

## Property Description

Our expert commercial real estate team is very excited to present this spacious office space located just off of the I-55/Goodman Road Exit. This space offers numerous possibilities with two office spaces left from 999 sf a to 1,056 SF. There is an opportunity to subdivide spaces and customize them to fit your needs. Whether you are looking to move your business to a bigger and better location or

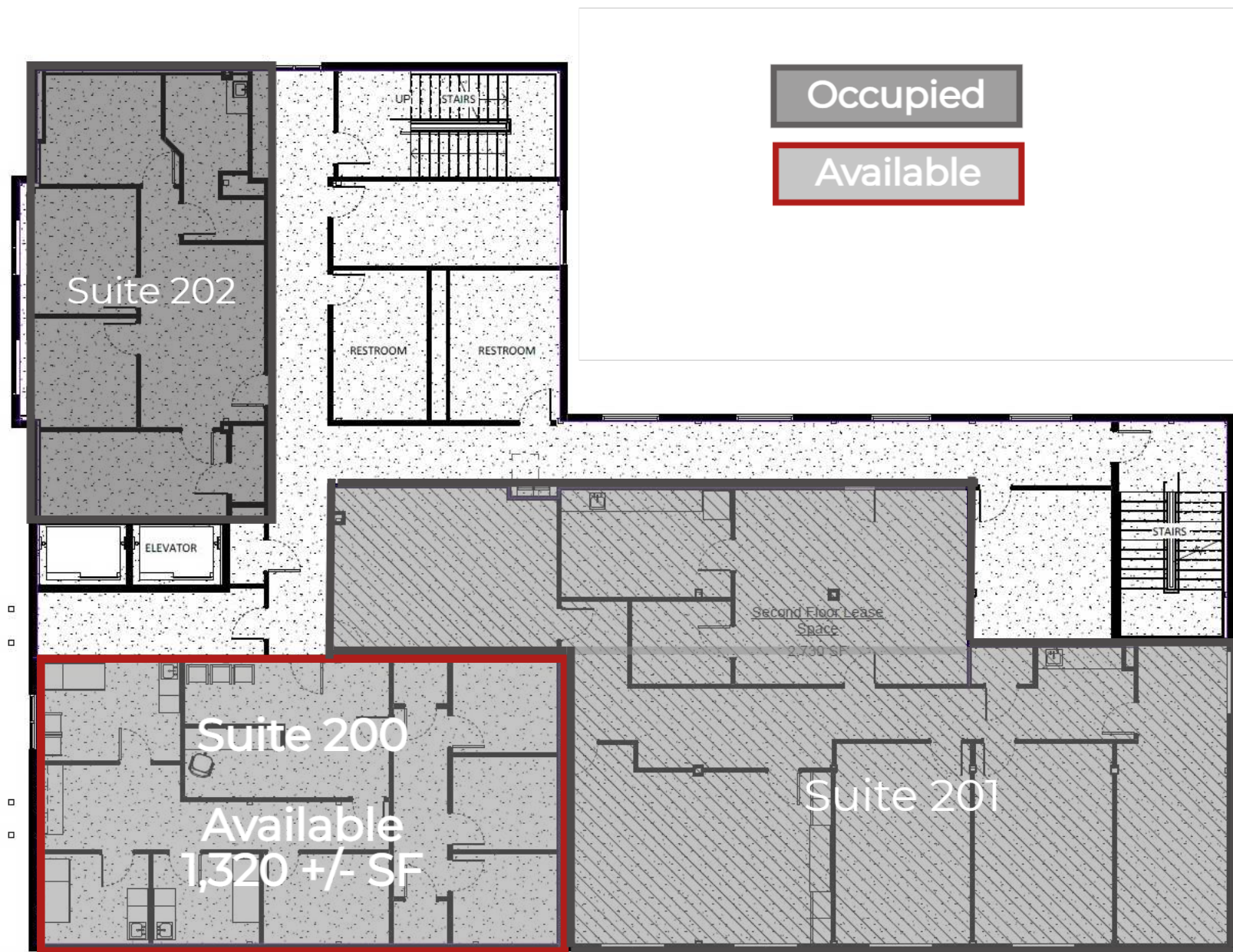
## Location Overview

This spacious office building is located just a few hundred feet from the I-55 exit! Take the Goodman exit from Interstate 55 in Southaven then turn left onto Southcrest Parkway and you will find this large office space right



## SECOND FLOOR

Spacious Office/Medical Space on Goodman Road!  
232 Goodman Road W | Southaven, MS 38671



Just a few hundred feet from I-55/Goodman Road Exit!  
Traffic Count is 38,000 cars per day!  
Spacious Offices with Room To Customize to Needs  
Drive Thru Available to Use or Transform!  
Heart of Southaven  
Potential Tenant Improvement Allowance Available!

# THIRD FLOOR

Spacious Office/Medical Space on Goodman Road!  
232 Goodman Road W | Southaven, MS 38671



Just a few hundred feet from I-55/Goodman Road Exit!  
Traffic Count is 38,000 cars per day!  
Spacious Offices with Room To Customize to Needs  
Drive Thru Available to Use or Transform!  
Heart of Southaven  
Tenant Improvement Allowance Available!

# BUSINESS MAP

Spacious Office/Medical Space on Goodman Road!  
232 Goodman Road W | Southaven, MS 38671



Goodman Rd W

Goodman Rd E



Marathon Way



55

Google