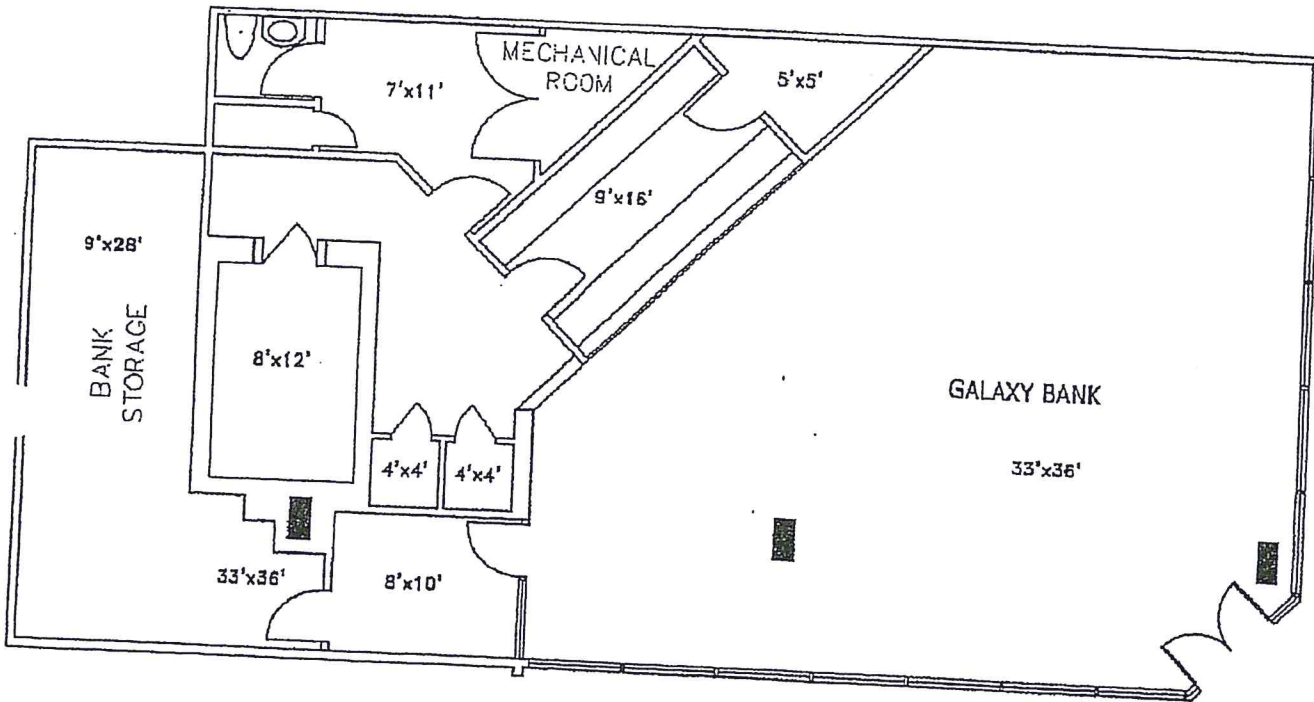
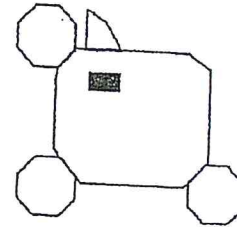


TOTAL SQ. FTG. = 2503.85
+ ATM ROOM = 56.00

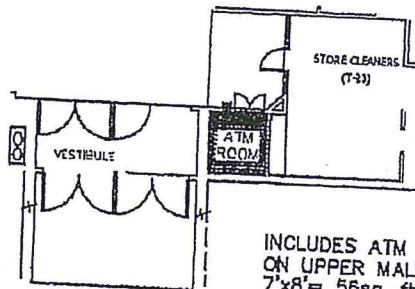


THIS PLAN IS A CORRECT AND ACCURATE REPRESENTATION OF THE IMPROVEMENTS DESCRIBED IN THE ENGINEERING SURVEY.

SEE MASTER DEED FOR DEFINITIONS OF "UNIT", "COMMON ELEMENT" -CE-, AND "LIMITED COMMON ELEMENT" -LCE-

////// COMMON ELEMENT -CE-
----- LIMITED COMMON ELEMENT -LCE-

DIMENSIONS, AREA CALCULATIONS AND EXACT CONFIGURATIONS MAY VARY BETWEEN SIMILAR UNITS DUE TO FIELD VARIATIONS AND/OR LACK OF ACCESSIBILITY. PURCHASERS SHOULD VERIFY CONFORMITY BETWEEN REPRESENTED UNIT AND ACTUAL UNIT.



INCLUDES ATM ROOM ON UPPER MALL PLAN 7'x8' = 56sq. ft.

PROJECT
PLANS FOR GALAXY BANK
GALAXY MALL
GUTTENBERG, NJ

dab
22 DIAMOND SPRING ROAD
DENVER, NJ 07834
BARRETT ALLEN GINSBERG
ARCHITECT
PHONE: (973) 625-9700
FAX: (973) 625-9750

TITLE: PLANS	
REVISION/DATE	
DATE: 8/14/07	DRAWING NUMBER: T-10
DRAWN: AB	
CHECKED: BAG	
APP. NO. 10000	SHEET 1 OF 1