

125 ACRES PRIME DEVELOPMENT LAND

1326 Smithland Road, Harrisonburg, VA 22802

Executive Summary



OFFERING SUMMARY

Sale Price: \$2,600,000

Lot Size: 125 Acres

Zoning: R-1

Utilities: Public Water Available
Public Sewer Available

MLS#: 552196



PROPERTY OVERVIEW

Prime 125 acres ideal for development purposes such as single family homes, senior living, other governmental uses, etc. Public water & sewer are available in the street. Owner will consider some private financing for qualified buyers. The City & County support use of this property for the right developer. The value is in the location and growth potential in Harrisonburg. 125 acres of crop land and wooded areas. The farm home (3br/2ba) sits on about an acre in size with fruit trees, shrubs, and other farm buildings.

For More Information:

Logan Zysk
215.740.6416
logan.zysk@cottonwood.com

125 ACRES PRIME DEVELOPMENT LAND

1326 Smithland Road, Harrisonburg, VA 22802

Additional Photos



For More Information:

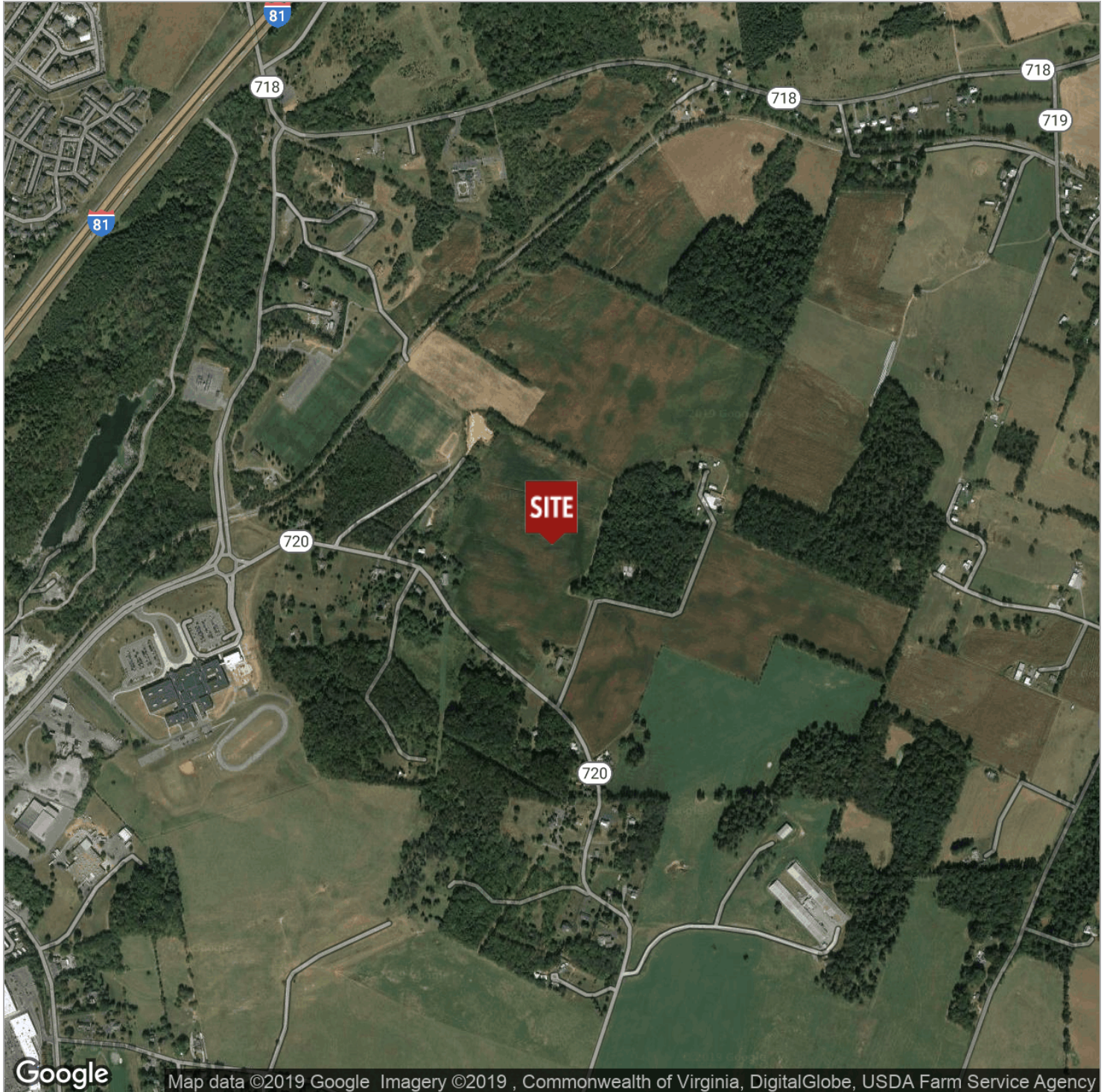
Logan Zysk
215.740.6416
logan.zysk@cottonwood.com

COTTONWOOD
COMMERCIAL
A COMMERCIAL REAL ESTATE BROKERAGE

125 ACRES PRIME DEVELOPMENT LAND

1326 Smithland Road, Harrisonburg, VA 22802

Location Maps



For More Information:

Logan Zysk

215.740.6416

logan.zysk@cottonwood.com

COTTONWOOD
COMMERCIAL
A COMMERCIAL REAL ESTATE BROKERAGE