

OFFICE BUILDING FOR LEASE

RIVERSIDE OFFICE BUILDING

2008 RIVERSIDE AVENUE, JACKSONVILLE, FL 32204



PRIMEREALTY



For More Information:

Matthew Clark

Senior Vice President
904.239.5269

mclark@primerealtyinc.com

4237 Salisbury Road North, Building 2, Suite 212 | Jacksonville, FL 32216 | 904.352.1400

Office | Industrial | Retail | Multi-Family | Student Housing | Hotels

Information gathered from sources deemed to be reliable. Buyer shall not rely solely on this information and should check and verify.

2008 Riverside Avenue, Jacksonville, FL 32204



OFFERING SUMMARY

Lease Rate:	\$18.00 SF/yr (Plus electric; NNN)
Available SF:	1,326 - 2,223 SF
Building Class:	B
Zoning:	CRO
Year Built:	1939
Stories:	3
Building Size:	14,480 SF
Market:	Jacksonville
Sub Market:	Riverside

PROPERTY OVERVIEW

The Renaissance at Riverside is a three story, historic office building located in the heart of Riverside. Adjacent to Memorial Park and set on the beautiful St. Johns River, This office building has ample parking and is walking distance to Five Points, Restaurants, and Shops. Offices are equipped with executive bathrooms and showers.

Each suite is separately metered for electric and most suites have their own restrooms.

AVAILABLE SPACES

SPACE	LEASE RATE	SIZE (SF)
201	\$18.00 SF/yr	2,223 SF
301	\$18.00 SF/yr	2,223 SF
102	\$18.00 SF/yr	1,326 SF
202	\$18.00 SF/yr	1,349 SF

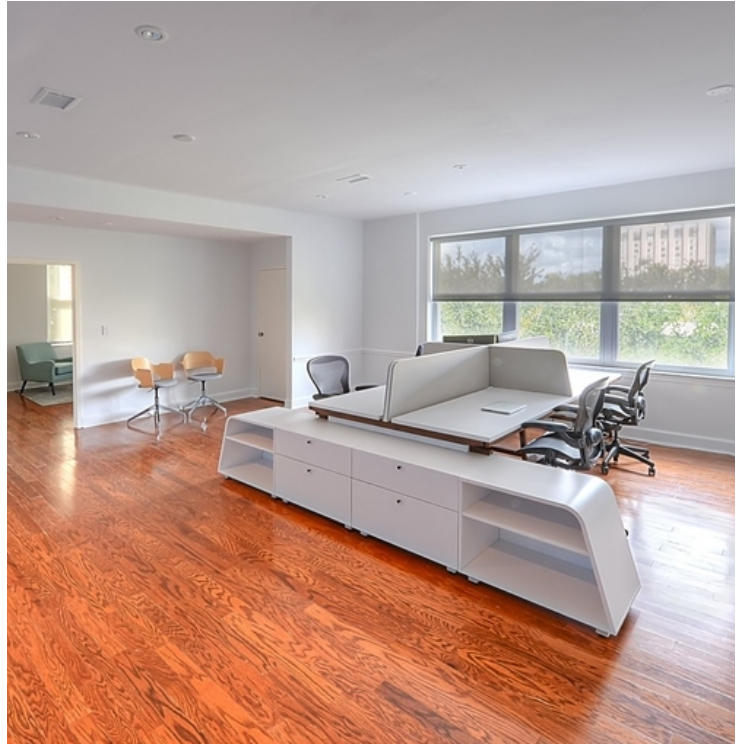
Matthew Clark

Senior Vice President
904.239.5269
mclark@primerealtyinc.com

Office Building For Lease | Riverside Office Building

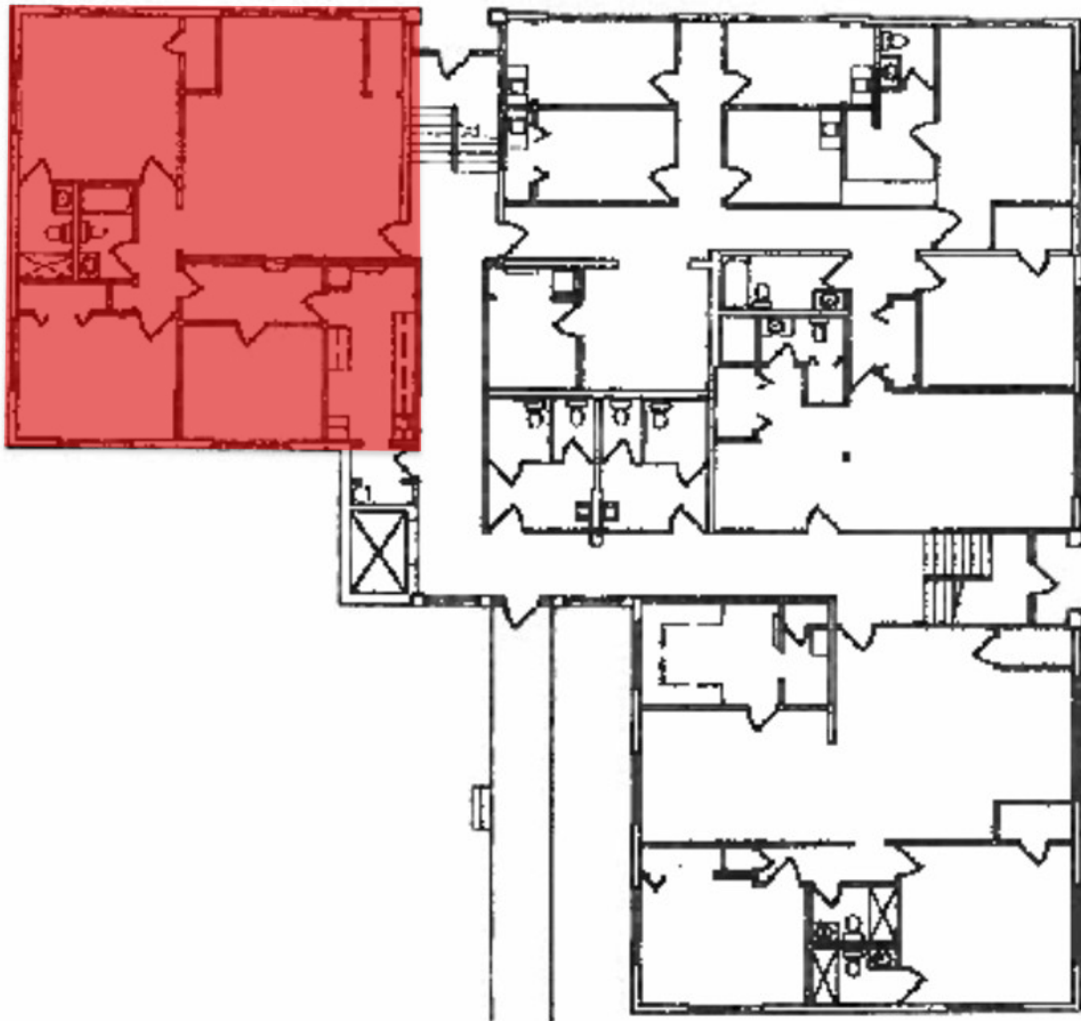


Interior Photos



Matthew Clark
Senior Vice President
904.239.5269
mclark@primerealtyinc.com

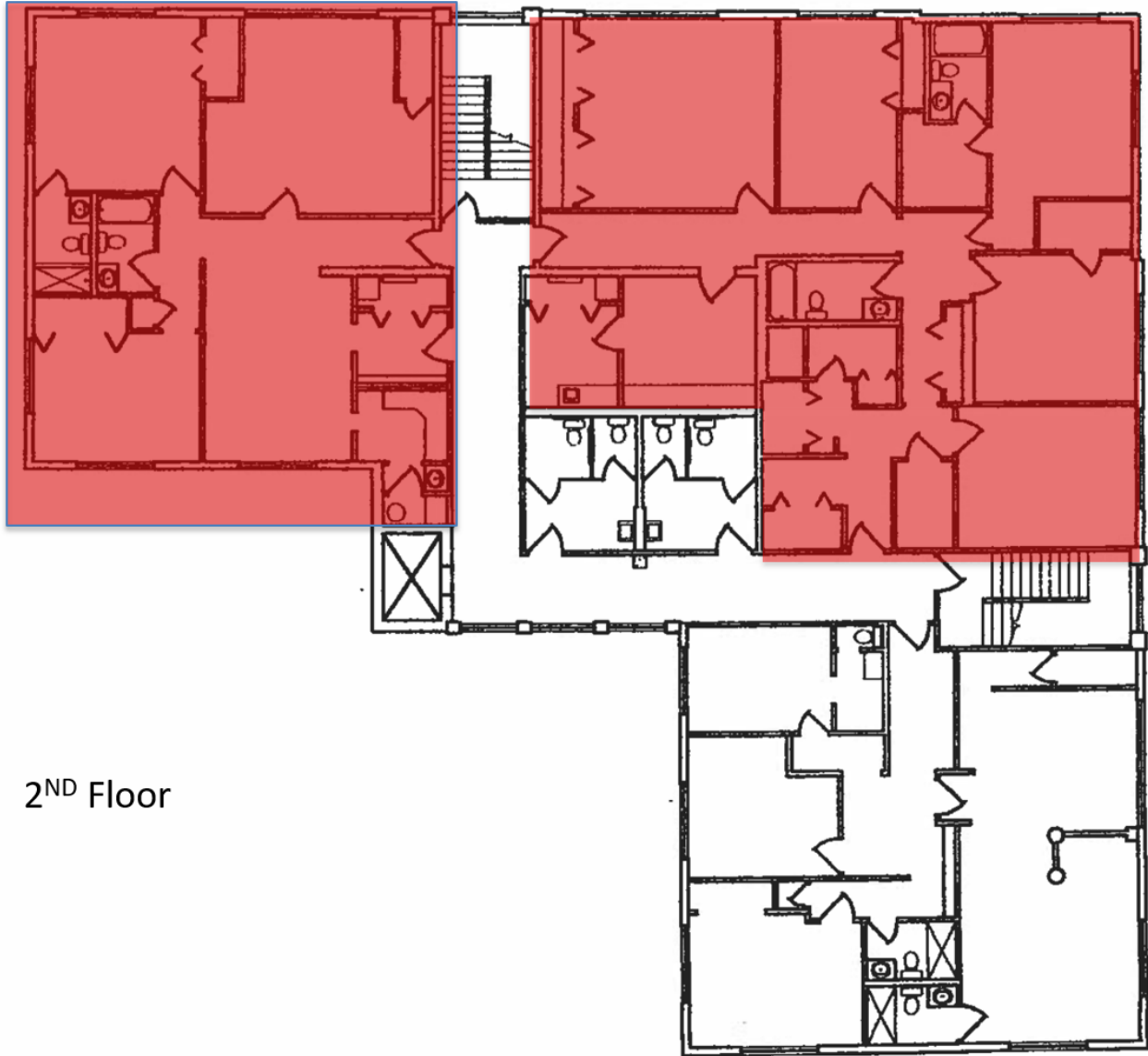
Floor Plan (1st Floor)



1st Floor

Matthew Clark
Senior Vice President
904.239.5269
mclark@primerealtyinc.com

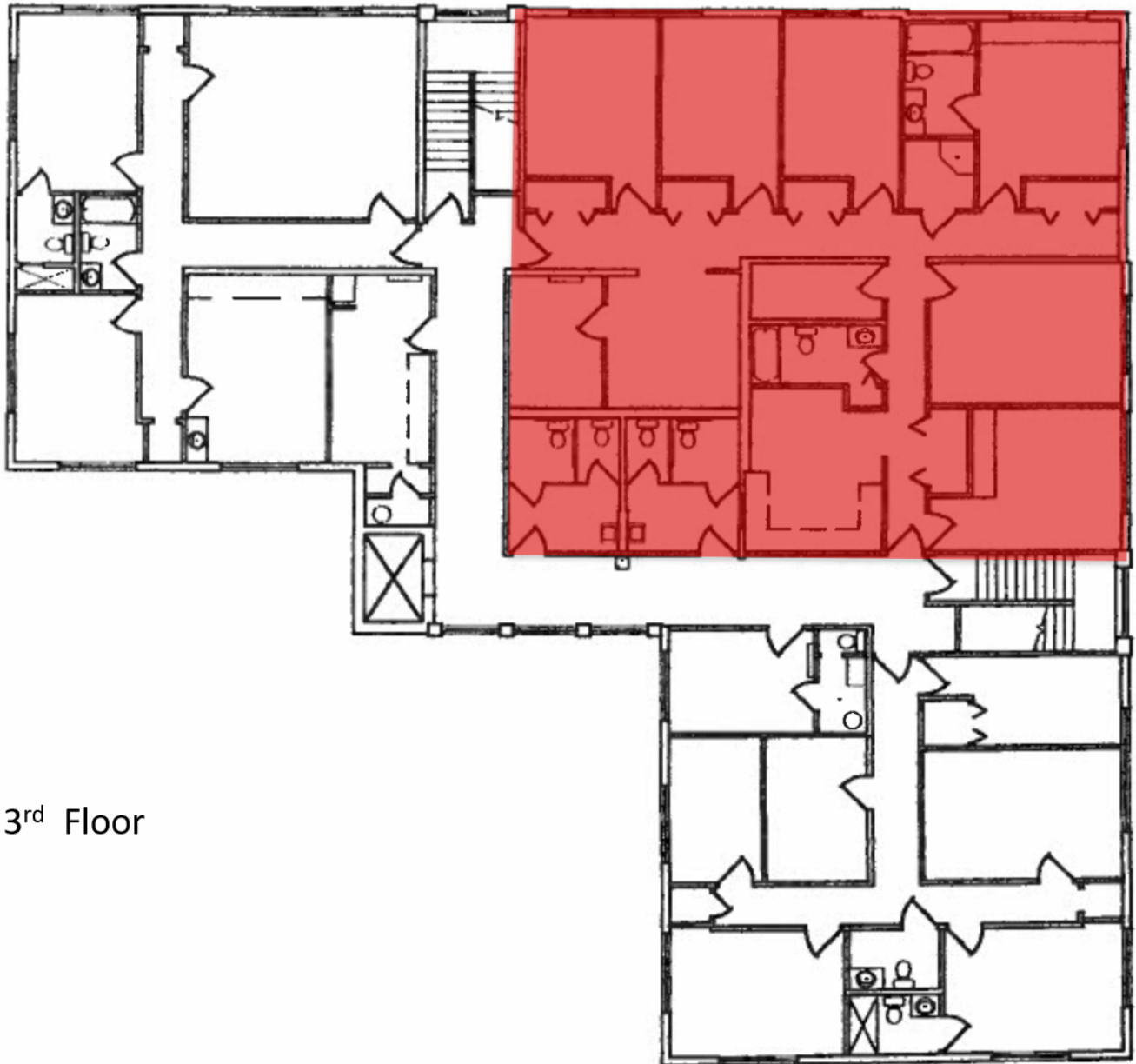
Floor Plan (2nd Floor)



2ND Floor

Matthew Clark
Senior Vice President
904.239.5269
mclark@primerealtyinc.com

Floor Plan (3rd Floor)



3rd Floor

Matthew Clark
Senior Vice President
904.239.5269
mclark@primerealtyinc.com