

FOR SALE

911 W. SAINT GEORGES AVE

LINDEN, NEW JERSEY 07036



5,500 SF AVAILABLE FOR SALE - DIVISIBLE

CBRE

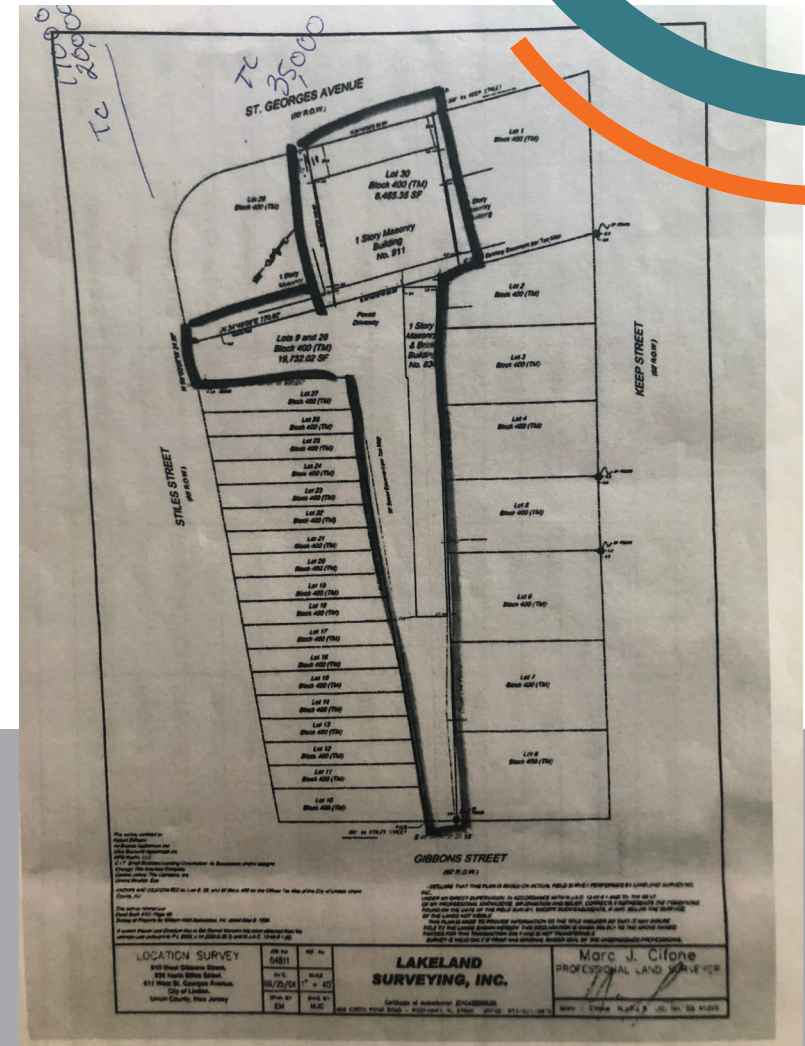
911 W. ST GEORGES AVE

LINDEN, NEW JERSEY 07036

PROPERTY INFO

- 5,500 sf available for sale - divisible
- Asking price: \$1.15 Million
- Freight elevator with full basement
- Great frontage on Route 27
- Large pylon sign with great visibility
- Part of a growing and redeveloped Linden
- Easy access to Routes 1, 27, as well as the Turnpike and Parkway entrances
- Join Subway, CVS, 7-Eleven, Wells Fargo
- Minutes from Linden train station
- Plenty of parking

SITE PLAN



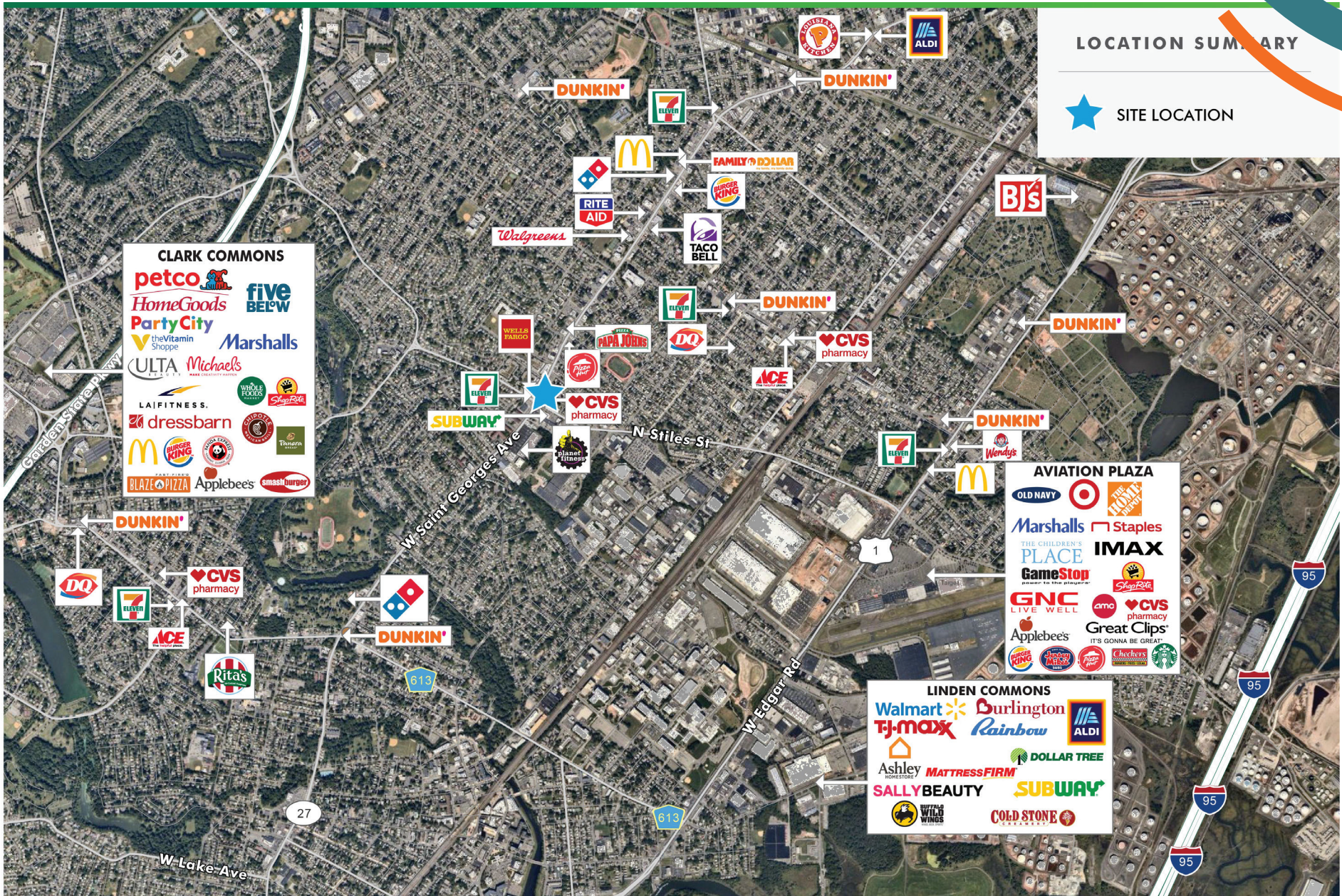
DEMOGRAPHICS

	1 Mile	3 Miles	5 Miles
POPULATION	23,560	167,447	453,543
DAYTIME POPULATION	19,678	153,427	419,958
MEDIAN HOUSEHOLD INCOME	\$83,765	\$79,533	\$78,647

911 W. ST GEORGES AVE

LINDEN, NEW JERSEY 07036

MARKET AERIAL



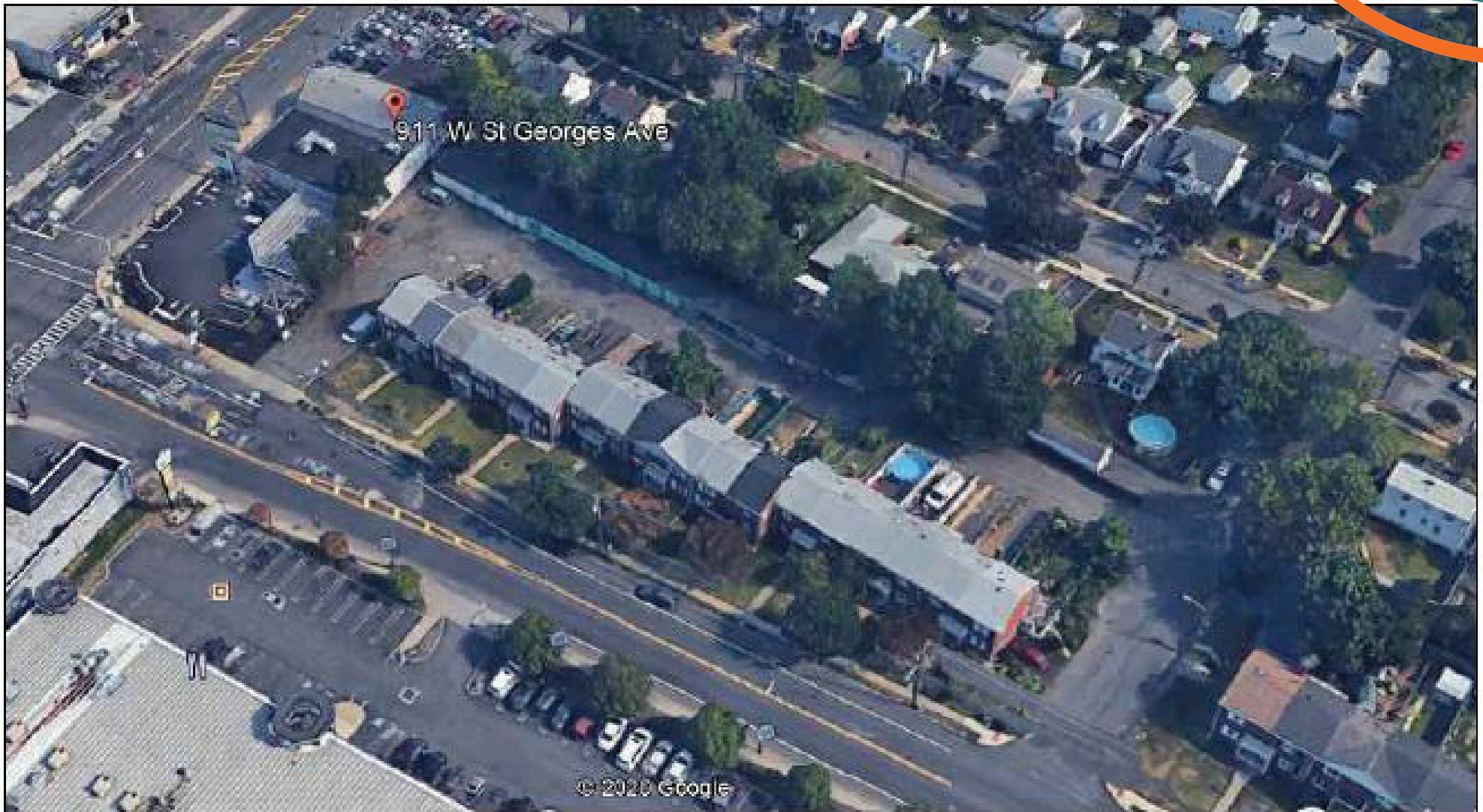
LOCATION SUMMARY

★ SITE LOCATION

911 W. ST GEORGES AVE

LINDEN, NEW JERSEY 07036

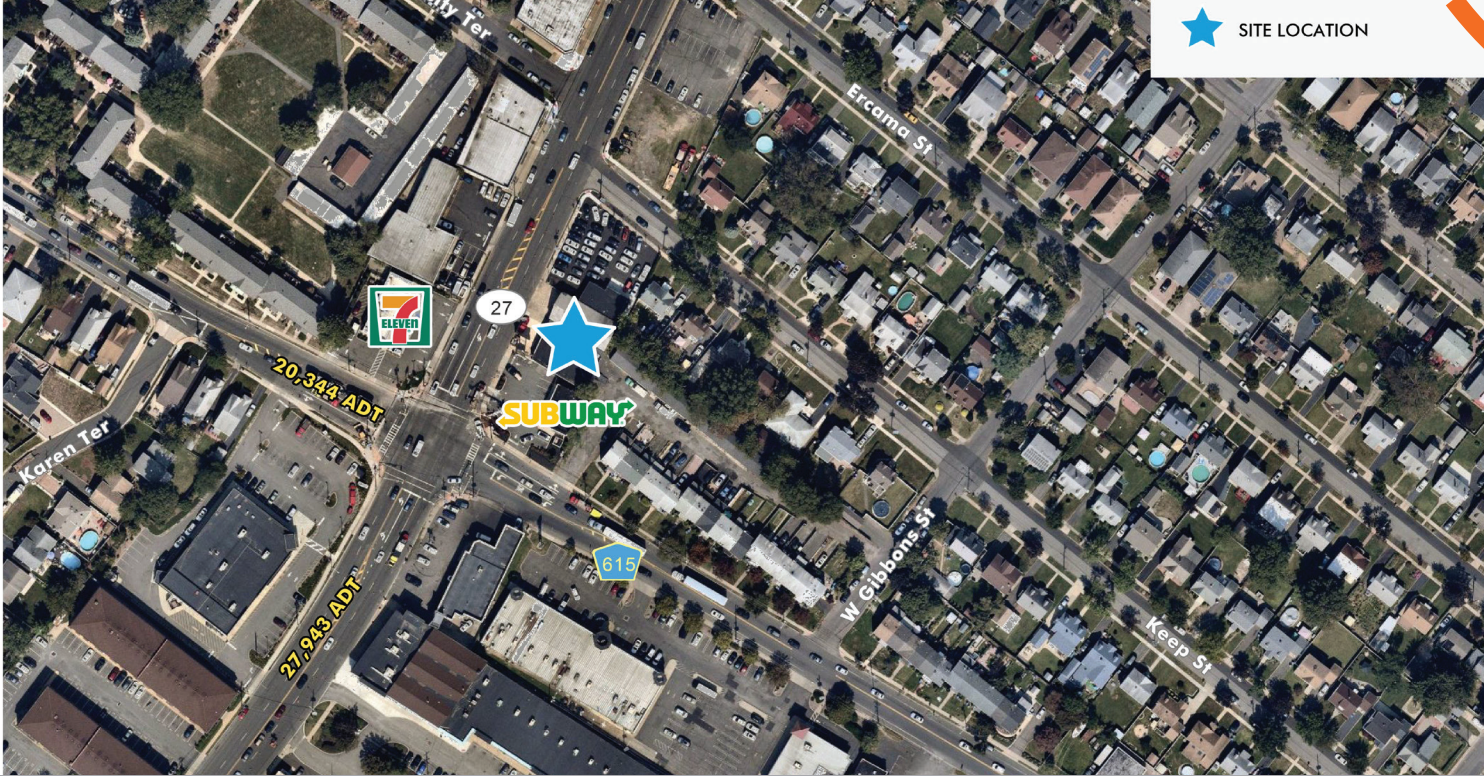
PRELIMINARY PARKING ANALYSIS



399 CAMPUS DRIVE

SOMERSET, NJ 08873

CLOSE - IN AERIAL



★ SITE LOCATION

CONTACT US

PATTI AMECANGELO

Vice President
+1 732 687 9725
patti.amecangelo@cbre.com

© 2020 CBRE, Inc. All rights reserved. This information has been obtained from sources believed reliable, but has not been verified for accuracy or completeness. You should conduct a careful, independent investigation of the property and verify all information. Any reliance on this information is solely at your own risk. CBRE and the CBRE logo are service marks of CBRE, Inc. All other marks displayed on this document are the property of their respective owners, and the use of such logos does not imply any affiliation with or endorsement of CBRE. Photos herein are the property of their respective owners. Use of these images without the express written consent of the owner is prohibited.

