

# Baldwin East Medical/Professional Office

3,370 RSF Available



## Property Highlights

- 1320 North Semoran Blvd. Suite 203, Orlando, FL 32807
- Semoran Boulevard Monument Signage Available (Approx. 50,000 cars per day)
- Ample Parking Available
- Excellent Access, adjacent to SR 408, SR 417 and SR 50.
- Close proximity to Orlando International Airport and Downtown Orlando.
- Professional Office Suites Available (Move in ready)
- Full Service Lease, Janitorial Included
- Professionally Managed
- Onsite Ownership

For Information Contact:

Faith Pamplin, Mike Fess, or Gabriela Ferreira

1300 N Semoran Blvd. – Suite 225, Orlando, FL 32807

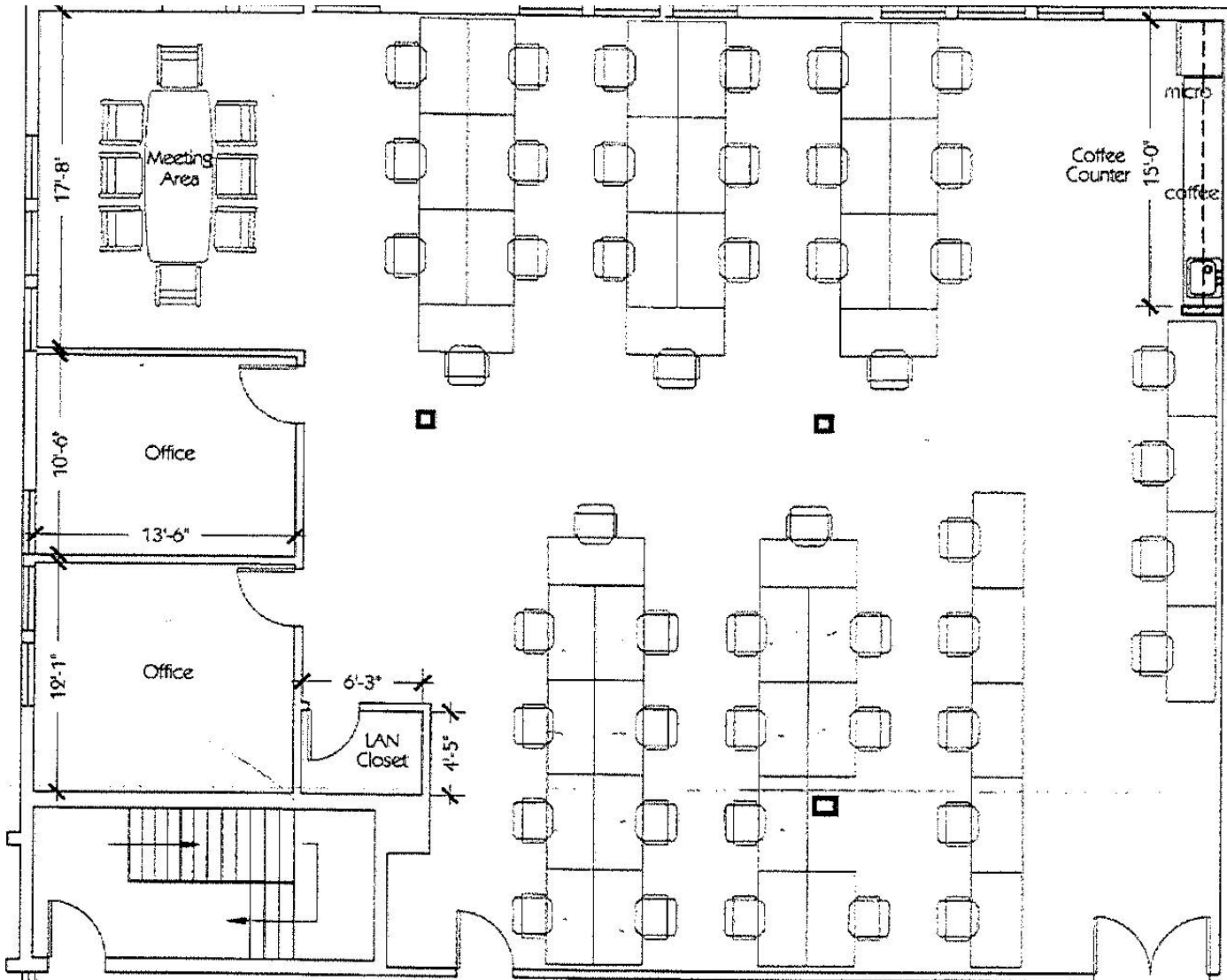
Office: 407.660.4949 | Fax: 407.660.4995

[faithpamplin@equitypartners.net](mailto:faithpamplin@equitypartners.net), [mikefess@equitypartners.net](mailto:mikefess@equitypartners.net),  
[gabrielaferreira@equitypartners.net](mailto:gabrielaferreira@equitypartners.net)

# Baldwin East

## Medical/Professional Office

3,370 RSF Available



For Information Contact:

Faith Pamplin, Mike Fess, or Gabriela Ferreira

1300 N Semoran Blvd. – Suite 225, Orlando, FL 32807

Office: 407.660.4949 | Fax: 407.660.4995

[faithpamplin@equitypartners.net](mailto:faithpamplin@equitypartners.net), [mikefess@equitypartners.net](mailto:mikefess@equitypartners.net),  
[gabrielaferreira@equitypartners.net](mailto:gabrielaferreira@equitypartners.net)