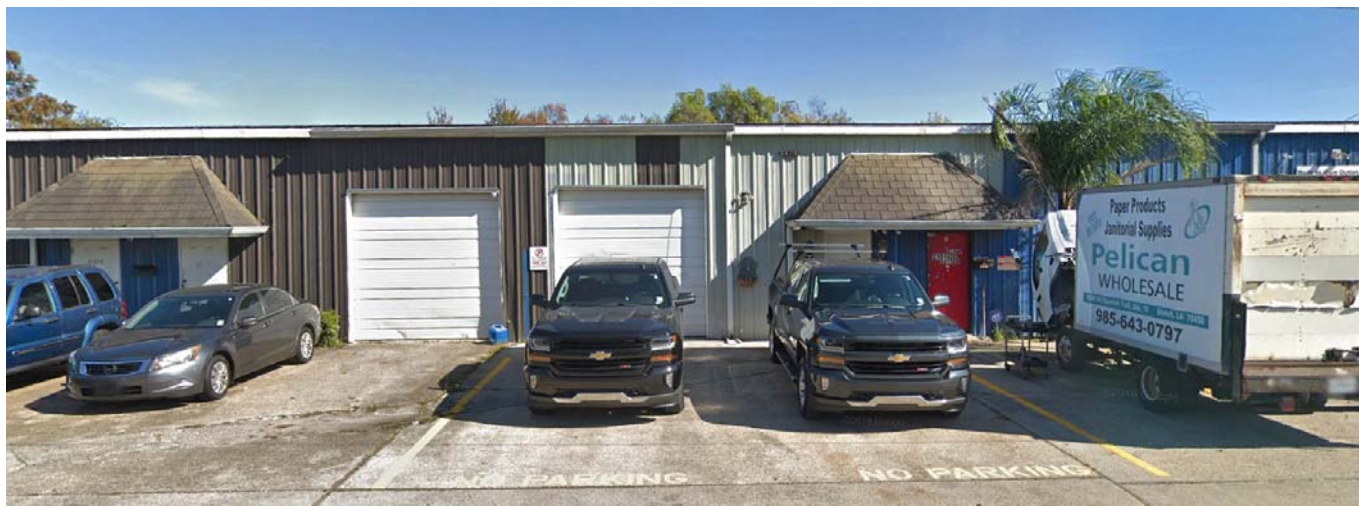




AVAILABLE



For Lease Office Warehouse



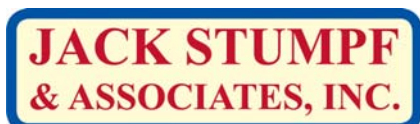
Location: 2101 Alamo Street, Harvey, LA 70058
(Off 11th St./Breaux Ave. halfway between Manhattan Blvd. & Peters Rd.)

Available:	<u>Suite</u>	<u>Office</u>	<u>Warehouse</u>	<u>Total</u>	<u>Monthly</u>
B.....	450sf	1,300sf.....	1,750sf	\$950.00

Lease Type: Modified Gross

Zoning: OW-1

- Info:**
- » Located across the street from Harvey Playground
 - » Suite B has one roll up door
 - » Last used as a cabinet shop



COMMERCIAL REAL ESTATE SERVICES

1700 Central Boulevard
Harvey, Louisiana 70058
(504) 366-6800
www.jackstumpf.com

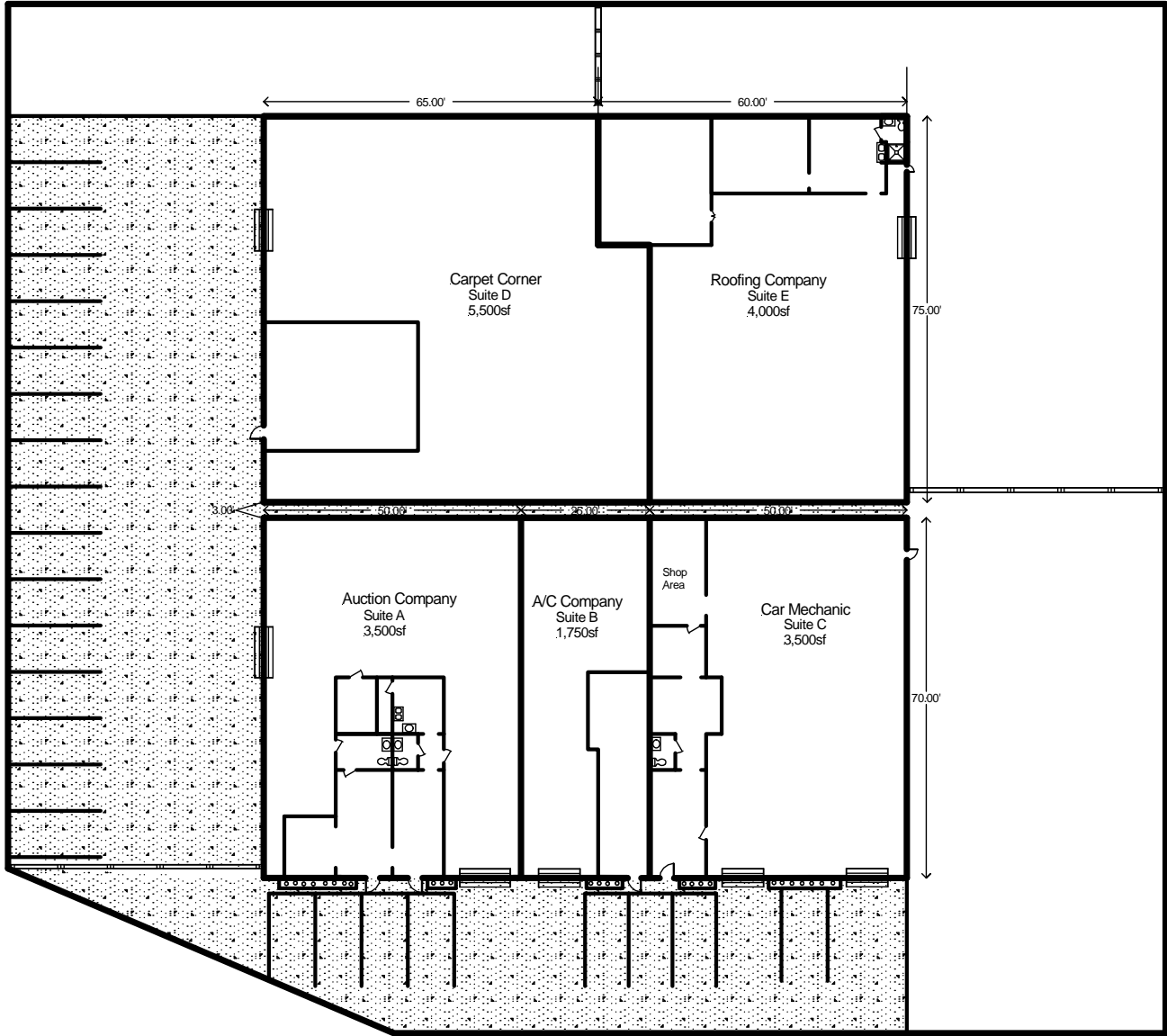
Listing Agent: Jon Cerruti

October 2019

The information presented herein has been furnished by the owner or obtained from sources we deem reliable. No warranties or representations, either expressed or implied are made as to the accuracy of the data provided, and same is subject to error, omission, change of price, and/or conditions of availability without notice.



November 1, 2013



2101 Alamo Street, Harvey, LA