

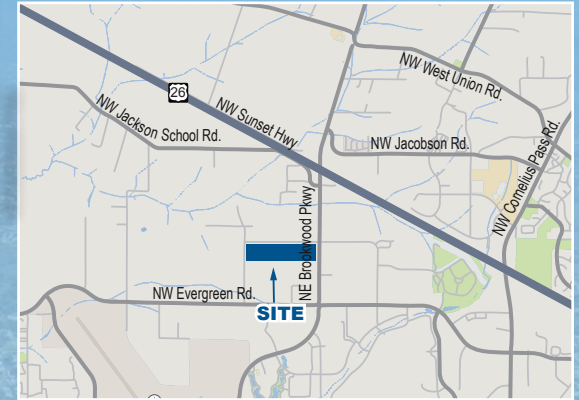
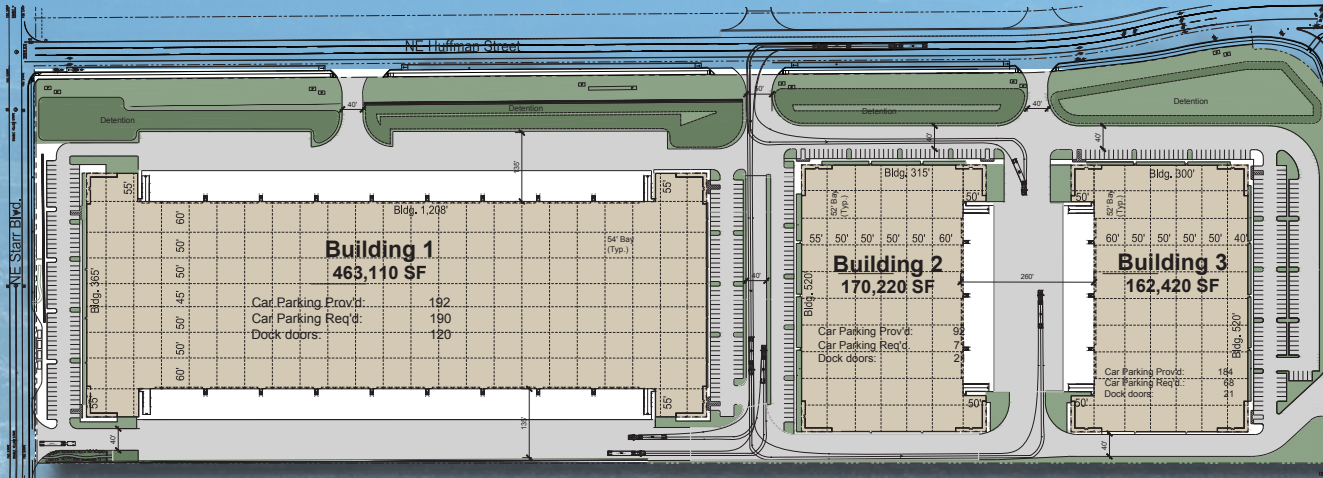


MAJESTIC REALTY CO.

45.61 ACRES (DIVISIBLE)

BUILD-TO-SUIT OPPORTUNITY

BROOKWOOD PKWY & HUFFMAN ST, HILLSBORO, OR

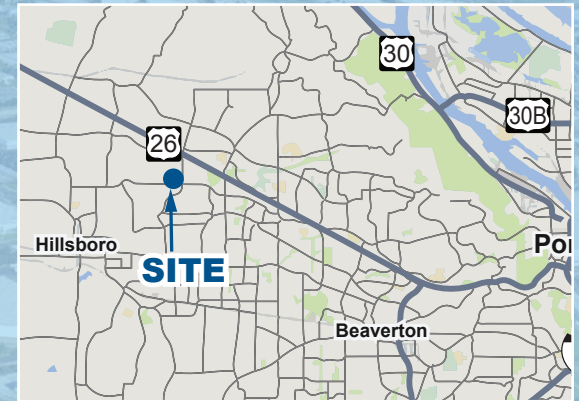


LOCATION

- Immediate Access to site via Brookwood Parkway at Highway 26
- High Identity Corridor for Corporate Users
- PGE Offers Substantial Power to Meet Hillsboro User Needs

SITE

- 2020 **DELIVERY**
- 45.61 Acres Available.
- 164,000 to 850,000 square feet available.
- Extensive Fiber Optics Network On-Site
- Cross-Dock Loading (building 1)
- 32'-36' Clear Height
- Offices to suit
- Flexible Build-To-Suit Building Size



For more information, please contact:



MAJESTIC REALTY CO.

R.E. License #00255328 (CA)
13191 Crossroads Parkway North, 6th Floor
City of Industry, CA 91746-3497
www.majesticrealty.com

PHILLIP BROWN

Tel (562) 948-4350
PBrown@majesticrealty.com

MARC BURNS

Tel (562) 948-4365
MBurns@majesticrealty.com

MICHAEL PERKINS

Tel (562) 948-4381
MPerkins@majesticrealty.com



MAJESTIC REALTY CO.

45.61 ACRES (DIVISIBLE)

GROUND LEASE OR BUILD-TO-SUIT FOR LEASE

BROOKWOOD PKWY & HUFFMAN ST, HILLSBORO, OR

For more information, please contact:

PHILLIP BROWN

Tel (562) 948-4350

PBrown@majesticrealty.com

MARC BURNS

Tel (562) 948-4365

MBurns@majesticrealty.com

MICHAEL PERKINS

Tel (562) 948-4381

MPerkins@majesticrealty.com

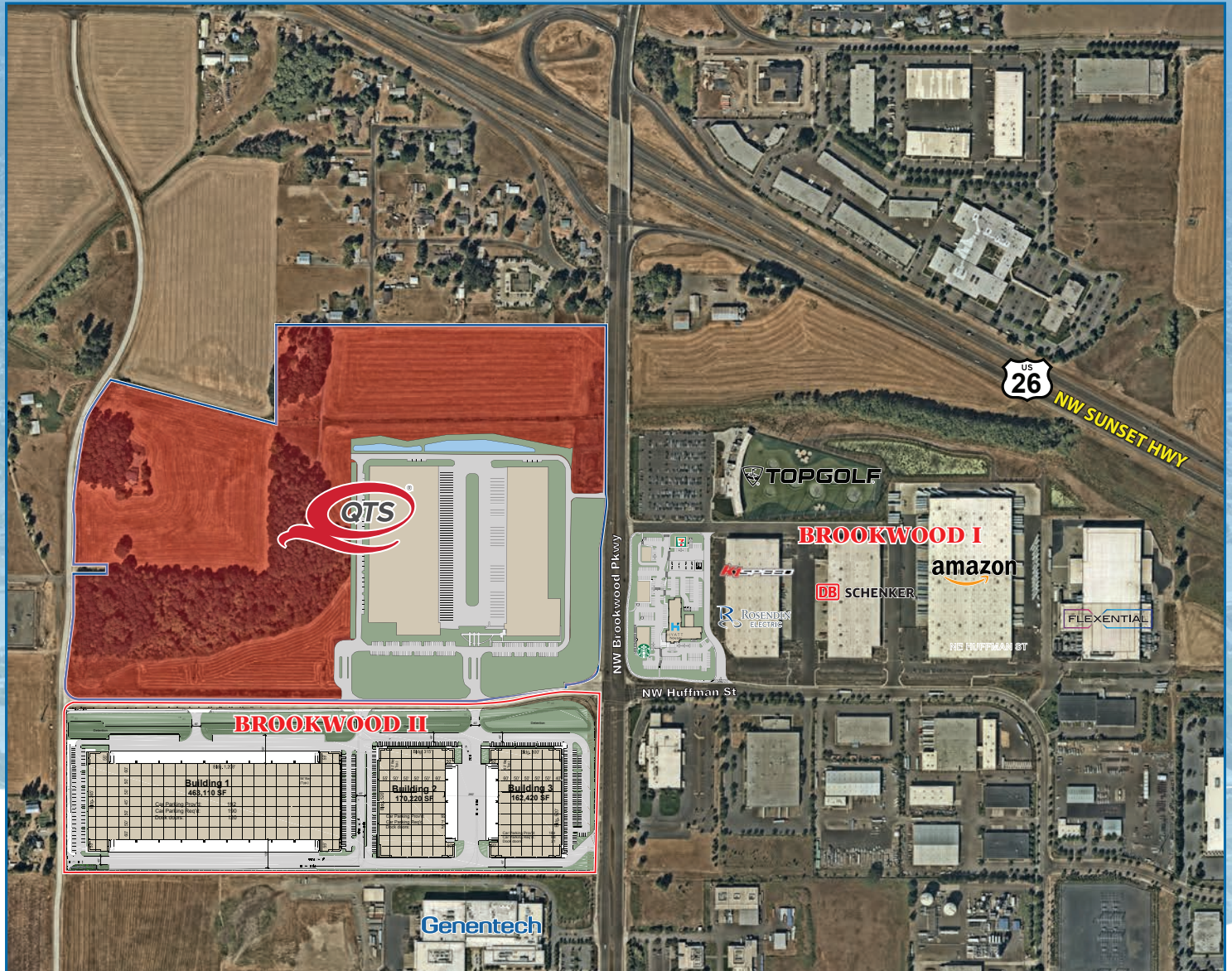
2020 DELIVERY

**GROUND LEASE
- OR -
BUILD TO SUIT**



MAJESTIC REALTY CO.

R.E. License #00255328 (CA)
13191 Crossroads Parkway North, 6th Floor
City of Industry, CA 91746-3497
www.majesticrealty.com



This statement is based upon information which we believe to be correct and is obtained from sources we regard as reliable but we assume no liability for errors or omissions therein.