

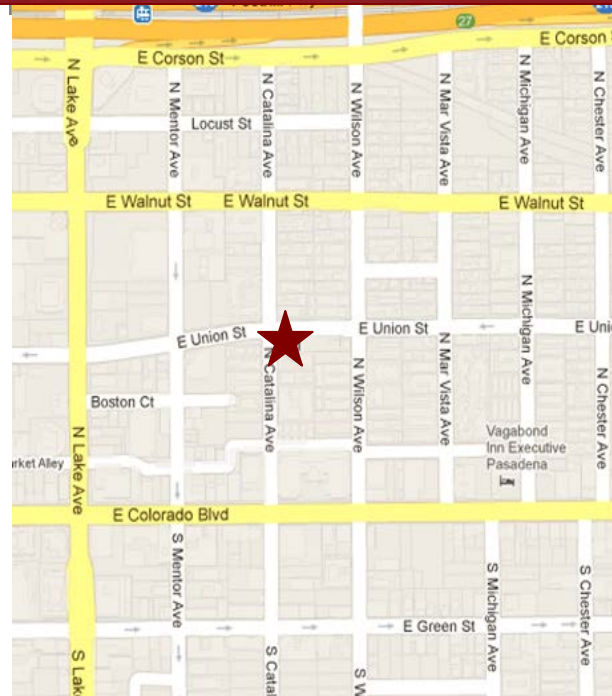
UNION CATALINA BUILDING



1010 EAST UNION STREET, PASADENA, CALIFORNIA

FOR LEASE

- AVAILABLE SPACE:** Suite 125 approx. 2,525 rentable sq. ft.
- RENTAL RATE:** \$2.50 per sq. ft., Modified Gross.
Tenant shall pay its prorata share of utilities and liability insurance. Landlord pays for interior janitorial.
- AVAILABLE:** May 1, 2020.
- PARKING:** Six (6) reserved parking spaces in subterranean garage at \$75.00 per space per month.
- FEATURES:**
- * Recently renovated common areas and new restrooms.
 - * Monument signage possible.
 - * Charter Cable served building.
 - * Responsive Management on-site.
 - * Security Cameras throughout.
 - * Elevator Served.
 - * Short walk to Lake Avenue and Colorado Boulevard retail and restaurants.
 - * Close proximity to "Gold Line" Station.



For Further Information, Contact:

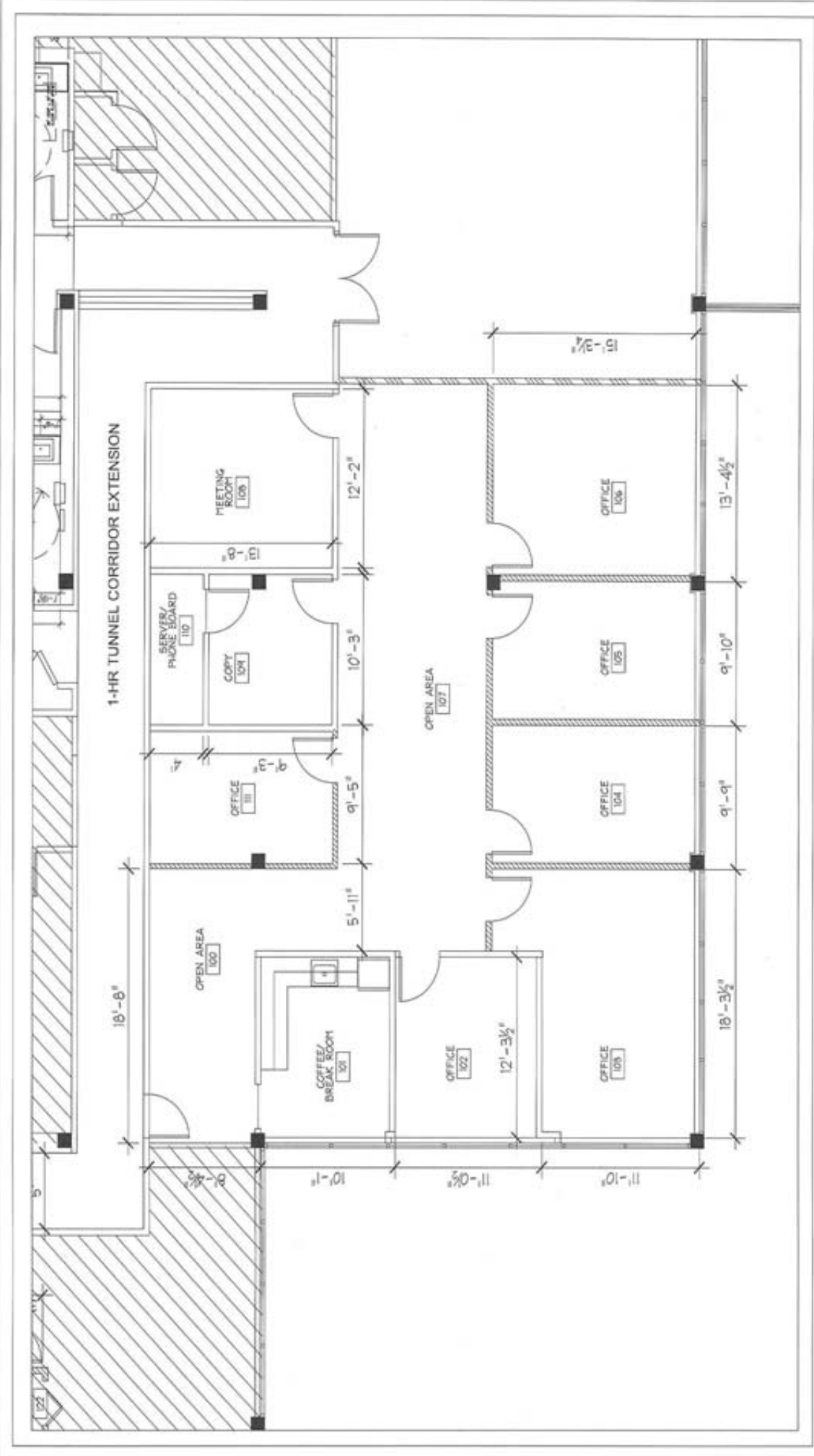
Carole Walker
cwalker@redstonecre.com
License No. 01525534

Dan Alle
dalle@redstonecre.com
License No. 01017941

(626) 795-2255



PLEASE DO NOT DISTURB TENANT



SPACE PLAN
 1010 E. UNION. ST.
 PASADENA, CA

2,151 U.S.F. 2,525 R.S.F.