

# 222 Great Road

## Littleton, MA

# For Lease

## Retail 1,100 - 7,290 sf



### Property Highlights:

- ◆ Conveniently located one mile from I-495
- ◆ Plaza built in 2007 - 30,000 Sq. Ft.
- ◆ Strong corporate neighbors
- ◆ 150 Surface Spaces are available; Ratio of 5.00/1,000 SF
- ◆ 18,200 ADT on Route 2A

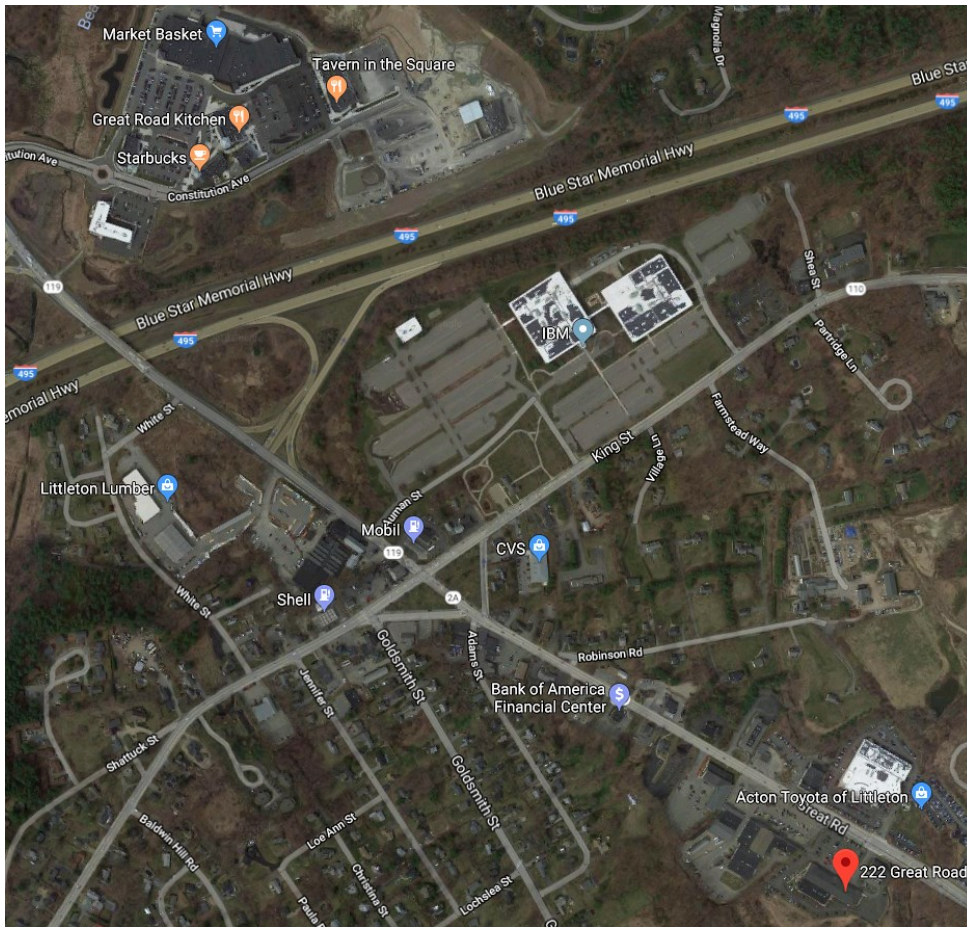
Disclaimer: The Evaluation Material contains information provided by the Owner and obtained by the Broker. While the information is believed to be accurate, Receiving Party should independently evaluate its completeness and accuracy before making an offer. This Evaluation Material is subject to prior placement, errors, omissions, changes or withdrawal without notice and does not constitute a recommendation, endorsement or advice as to the value of the Property by Disclosing Party.



Call for an appointment  
Tyler Spring: 617.834.8602  
George Robb: 857.891.7254

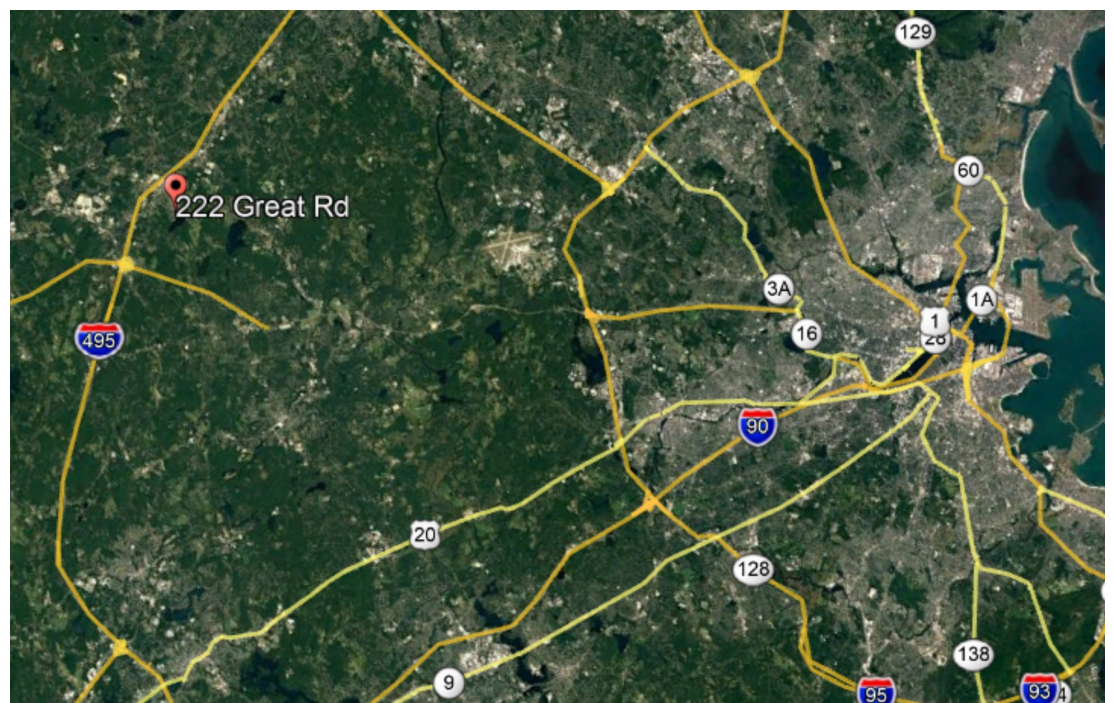
Omni Properties, LLC  
6 Lyberty Way Suite 203 Westford MA  
www.omniproperties.com  
978.369.4884

## *Exceptional Location & Access!* *Orchard Square*



◆ Less than 1 mile  
from I-495

◆ Only 25 miles  
from Boston!



# FLOOR PLANS

