

Pioneer Square

7109 Pioneer Way
Gig Harbor, WA

Adjacent to Gig Harbor City Hall

Available: ±1,200 SF (former tanning salon) & ±1,080 SF

\$14.00 PSF, plus utilities and garbage

Project is anchored by Kitsap Bank

“Main & Main” location at the corner of Pioneer & Grandview

On the entrance to historic downtown Gig Harbor

Close access to Highway 16



Location



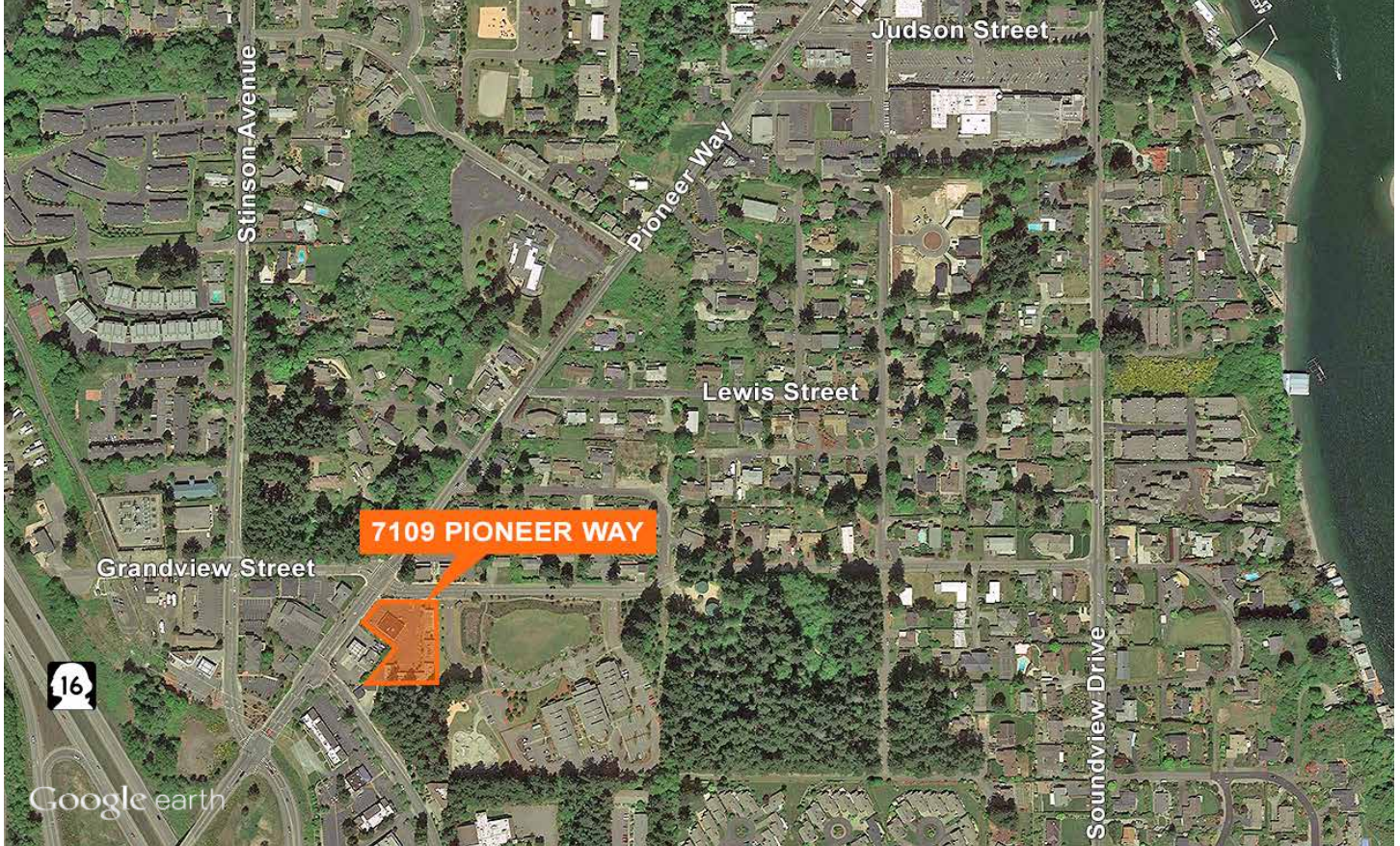
Contact

Cramer Foster

253.722.1423

cfoster@kiddermathews.com

Pioneer Square



Contact

Cramer Foster
253.722.1423
cfoster@kiddermathews.com

Pioneer Square



DEMOGRAPHICS

	1 mile	3 miles	5 miles
Population	4,701	23,271	58,964
Average Household Income	\$86,446	\$99,625	\$99,409

TRAFFIC COUNTS

Location	CPD
Pioneer Way & Kimball Drive	10,610
Grandview Street & 38th Avenue	8,900

Contact

Cramer Foster
 253.722.1423
 cfoster@kiddermathews.com