



# OFFICE BUILDING WITH YARD AVAILABLE

HUNTSVILLE, ALABAMA

## SALE

2211 Meridian Street  
Huntsville, AL 35811

### AVAILABLE SPACE

1,700+/- SF

### COMMENTS

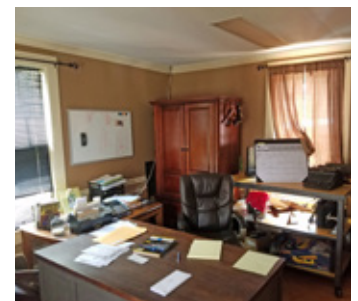
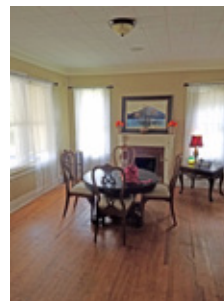
- Suitable for commercial use
- Yard area available for parking company vehicles or storing product
- Building offers an entryway/reception area, 5 offices, and a kitchen area
- Close proximity to downtown and convenient access to I-565 and Memorial Parkway
- Situated just north of Oakwood Ave, on the west side of Meridian Street

### PRICING

\$325,000

### EXCLUSIVE AGENT

Jeremy D. Pope, CCIM, SIOR  
jeremyp@grahamcompany.com  
256.382.9010



355 Quality Circle  
Suite E  
Huntsville, AL 35806

TEL 256.382.9010  
FAX 256.382.9011  
grahamcompany.com

Information deemed reliable, but not guaranteed.

