

# 1508

EUREKA ROAD  
ROSEVILLE, CALIFORNIA

±7,256 RSF AVAILABLE

## PROPERTY HIGHLIGHTS

SUITE 275\*\* 2,588 RSF

SUITE 290\*\* 4,668 RSF

\*\*SUITES 275 AND 290 ARE CONTIGUOUS FOR  
A TOTAL OF ±7,256 RSF

- On-site Fitness Room with showers and lockers
- On-site common conference room
- On-site management
- Private balcony available in select suites
- Walking distance to high-end retail and entertainment venues

## CONTACT INFORMATION

### CHRIS SCHWARZE

EXECUTIVE DIRECTOR

916.288.4803

chris.schwarze@cushwake.com

CA License #01291261

### CHAD COOK, MCR, SIOR, CCIM

SENIOR DIRECTOR

916.329.1562

chad.cook@cushwake.com

CA License #01711687

### KEVIN PARTINGTON

EXECUTIVE DIRECTOR

916.288.4807

kevin.partington@cushwake.com

CA License #01199010

### CUSHMAN & WAKEFIELD INC.

400 Capitol Mall, Suite 1800,

Sacramento, CA 95814

916.288.4800

LIC. #0061633

# 1508

EUREKA ROAD  
ROSEVILLE, CALIFORNIA

1ST FLOOR

2ND FLOOR

FLOOR PLANS  
1<sup>st</sup> FLOOR



## CONTACT INFORMATION

**CHRIS SCHWARZE**

EXECUTIVE DIRECTOR

916.288.4803

chris.schwarze@cushwake.com

CA License #01291261

**CHAD COOK, MCR, SIOR, CCIM**

SENIOR DIRECTOR

916.329.1562

chad.cook@cushwake.com

CA License #01711687

**KEVIN PARTINGTON**

EXECUTIVE DIRECTOR

916.288.4807

kevin.partington@cushwake.com

CA License #01199010

**CUSHMAN & WAKEFIELD INC.**

400 Capitol Mall, Suite 1800,

Sacramento, CA 95814

916.288.4800

LIC. #0061633

# 1508

**EUREKA ROAD**  
ROSEVILLE, CALIFORNIA

[1ST FLOOR](#)[2ND FLOOR](#)

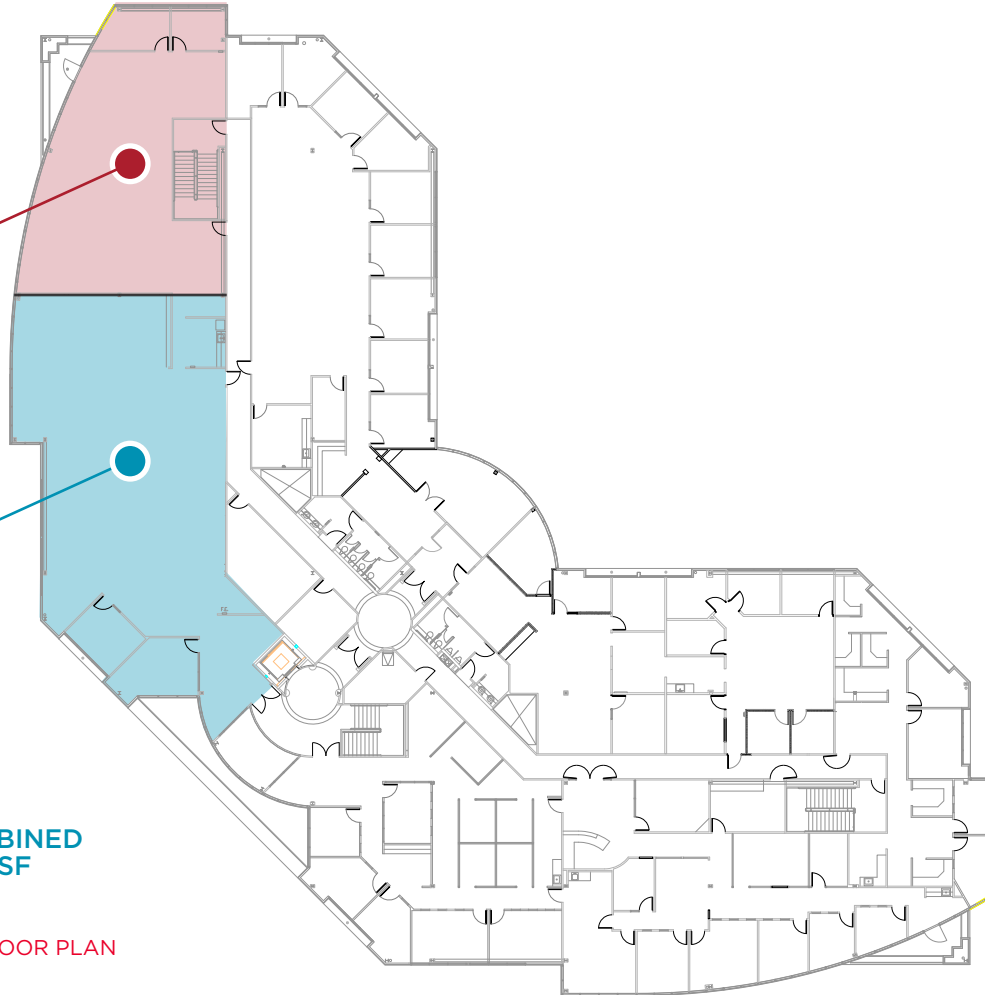
**FLOOR PLANS**  
2<sup>nd</sup> FLOOR

**SUITE 275\***

2,588 SF

**SUITE 290\***

4,668 SF



\*SUITE 275 AND SUITE 290 CAN BE COMBINED  
TO FORM A CONTIGUOUS SPACE ±7,256 SF

[CLICK ON HIGHLIGHTED SPACE TO DOWNLOAD FLOOR PLAN](#)

## CONTACT INFORMATION

**CHRIS SCHWARZE**

EXECUTIVE DIRECTOR

916.288.4803

chris.schwarze@cushwake.com

CA License #01291261

**CHAD COOK, MCR, SIOR, CCIM**

SENIOR DIRECTOR

916.329.1562

chad.cook@cushwake.com

CA License #01711687

**KEVIN PARTINGTON**

EXECUTIVE DIRECTOR

916.288.4807

kevin.partington@cushwake.com

CA License #01199010

**CUSHMAN & WAKEFIELD INC.**

400 Capitol Mall, Suite 1800,

Sacramento, CA 95814

916.288.4800

LIC. #0061633

# 1508

**EUREKA ROAD  
ROSEVILLE, CALIFORNIA**

## GALLERY



## CONTACT INFORMATION

**CHRIS SCHWARZE**  
EXECUTIVE DIRECTOR

916.288.4803  
chris.schwarze@cushwake.com  
CA License #01291261

**CHAD COOK, MCR, SIOR, CCIM**  
SENIOR DIRECTOR

916.329.1562  
chad.cook@cushwake.com  
CA License #01711687

**KEVIN PARTINGTON**  
EXECUTIVE DIRECTOR

916.288.4807  
kevin.partington@cushwake.com  
CA License #01199010

**CUSHMAN & WAKEFIELD INC.**  
400 Capitol Mall, Suite 1800,

Sacramento, CA 95814  
916.288.4800  
LIC. #0061633

# 1508

**EUREKA ROAD  
ROSEVILLE, CALIFORNIA**

## LOCATION



### CONTACT INFORMATION

**CHRIS SCHWARZE**  
EXECUTIVE DIRECTOR  
916.288.4803  
chris.schwarze@cushwake.com  
CA License #01291261

**CHAD COOK, MCR, SIOR, CCIM**  
SENIOR DIRECTOR  
916.329.1562  
chad.cook@cushwake.com  
CA License #01711687

**KEVIN PARTINGTON**  
EXECUTIVE DIRECTOR  
916.288.4807  
kevin.partington@cushwake.com  
CA License #01199010

**CUSHMAN & WAKEFIELD INC.**  
400 Capitol Mall, Suite 1800,  
Sacramento, CA 95814  
916.288.4800  
LIC. #0061633