

FOR LEASE

Buddha Building

312 NW 10th Avenue, Portland, OR



FEATURES

First Floor: 2,245 SF, \$30/SF/YR, NNN
Lower Level: 2,248 SF, rent negotiable
Estimated NNNs: \$4/SF/YR

Historic building in the heart of the Pearl, built in 1900

Hardwoods, exposed brick and ample light make this a perfect service or retail creative office environment

Shower and locker room facilities

Steps away from streetcar line and mass transit, easy access to freeways and bridges

CONTACT

Sara Daley
503.721.2726
sdaley@kiddermathews.com

Corine Nussmeier
503.721.2724
corinen@kiddermathews.com

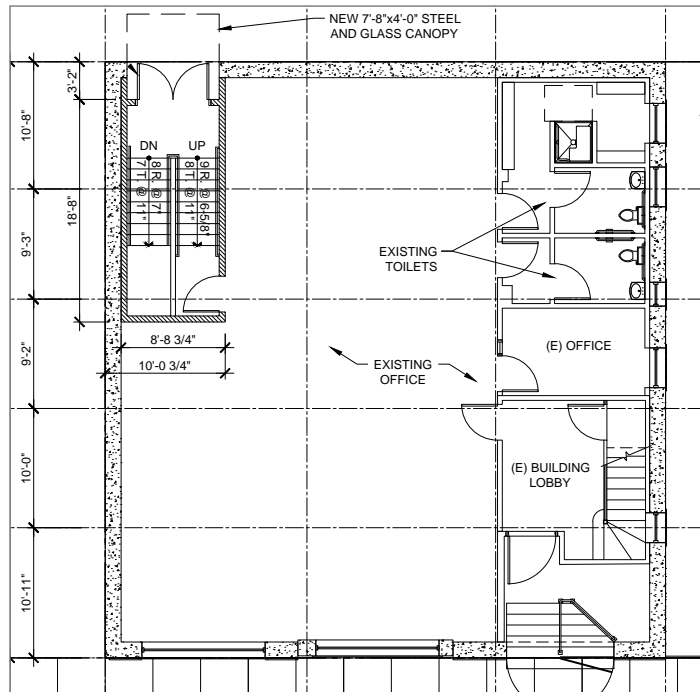


FOR LEASE

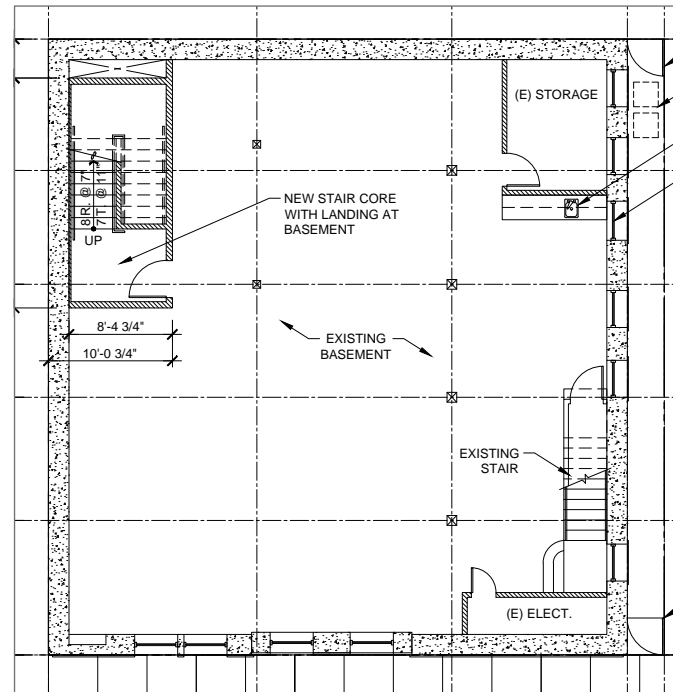
Buddha Building

FLOOR PLANS

FIRST FLOOR
2,245 SF



LOWER LEVEL
2,248 SF



CONTACT

Sara Daley
503.721.2726
sdaley@kiddermathews.com

Corine Nussmeier
503.721.2724
corinen@kiddermathews.com



FOR LEASE

Buddha Building

NEIGHBORHOOD & DISTRICT INFORMATION

The Pearl District has transformed in the last 20 years, eclipsing other Portland neighborhoods as the City's creative and mercantile center. Steps from Pearl shopping epicenter in the Brewery Blocks, this district is characterized by charming historic renovated buildings interspersed with newer mixed use construction, and is teeming with restaurants, shops and services. With a walking score of 100, a transit score of 90 and a bike score of 96 on walkscore.com, this spot offers an unbeatable location for service retail or creative office uses.

CONTACT

Sara Daley
503.721.2726
sdaley@kiddermathews.com

Corine Nussmeier
503.721.2724
corinen@kiddermathews.com



FOR LEASE

Buddha Building

DISTRICT AERIAL



FOR LEASE

Buddha Building

AMENITIES MAP

