

NEW LISTING!

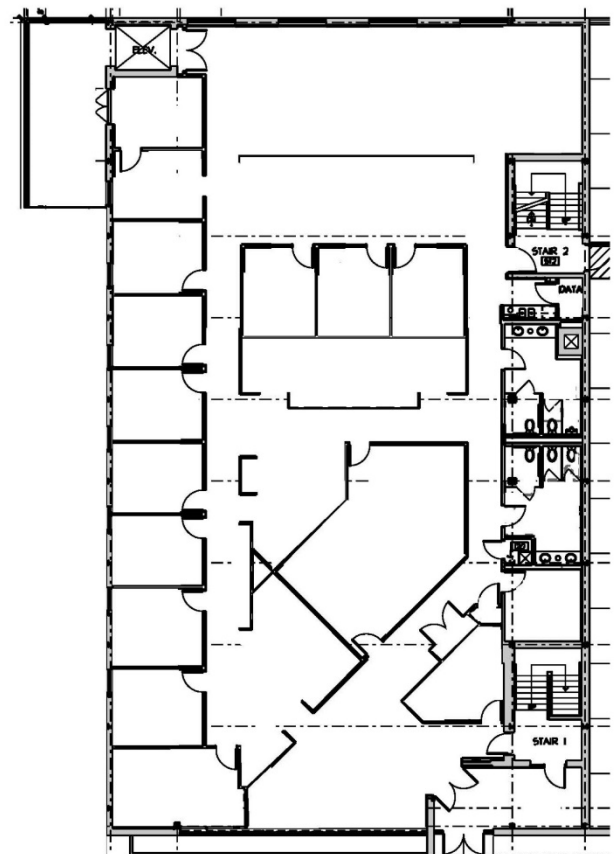
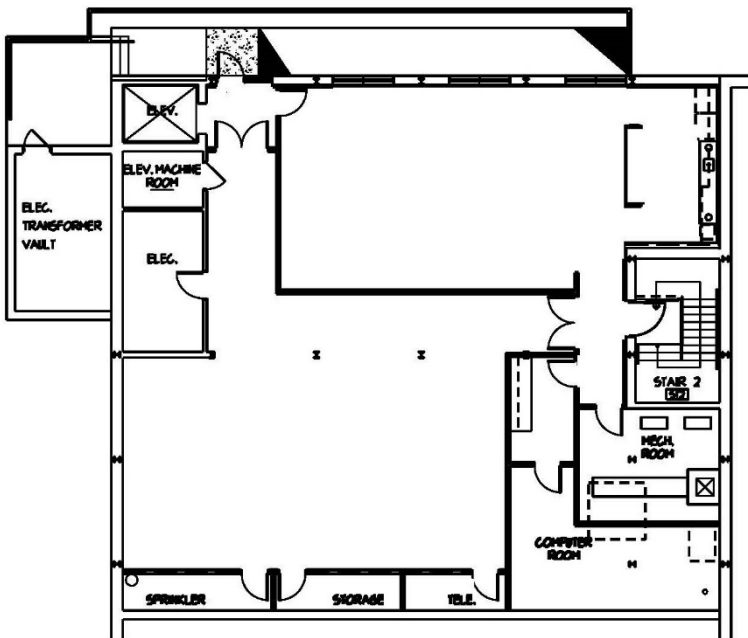
43 Harvard Street, Worcester, MA



12,221 SF AVAILABLE

Lower Level 3,267 sf
\$12.95/sf

Street Level 8,954 sf
\$17.95/sf



43 Harvard Street is a professionally managed, well maintained, modern office building with parking.

Excellent location in close proximity to Worcester's Central Business District and easy access to Route 9 and Interstate 290.

GROSS LEASE includes janitorial cleaning and all utilities.



Brokers Protected FULL Commissions Paid!

For more information and to schedule a viewing:

Cutler
Management Corp
(508) 792-1111 x-101



Proudly celebrating over 40 years!

We believe this information to be accurate. We are not, however responsible for errors or omissions, prior sales, leases or price changes, and we reserve the right to withdraw this property from the market without notice. Square Footage calculations are approximate and include an attributable.