

farmingdale, ny

55 motor avenue

outparcel to stop & shop supermarket available | for lease



DEMOGRAPHICS	1 MILE	3 MILES	5 MILES
Population	22,128	126,328	389,163
Median HHI	\$103,371	\$109,809	\$112,154
Daytime Population	8,252	44,871	270,842

Address	55 Motor Avenue Farmingdale, NY
Outparcel size	1.25 acres
Supermarket GLA	74,000 square feet
Asking Rent	Upon Request
Taxes/Ins	Approx. \$10.50 per square foot
Comments	<ul style="list-style-type: none">• 149' Fronting on Main Street by 263' on Motor Street• Area retail includes Stop & Shop, Walmart, United Artists, Floor & Decor, McDonalds, CVS, Dunkin Donuts, Bethpage Credit Union, 7-Eleven, Roslyn Savings, Dollar Tree, Enterprise Rental Car, Walgreens, The Home Depot, T.J. Maxx, Stew Leonard's, Bed Bath & Beyond, and many more

For More Information:

Stu Fagen | fagen@sabre.life | T 516 874 8070 x 1503

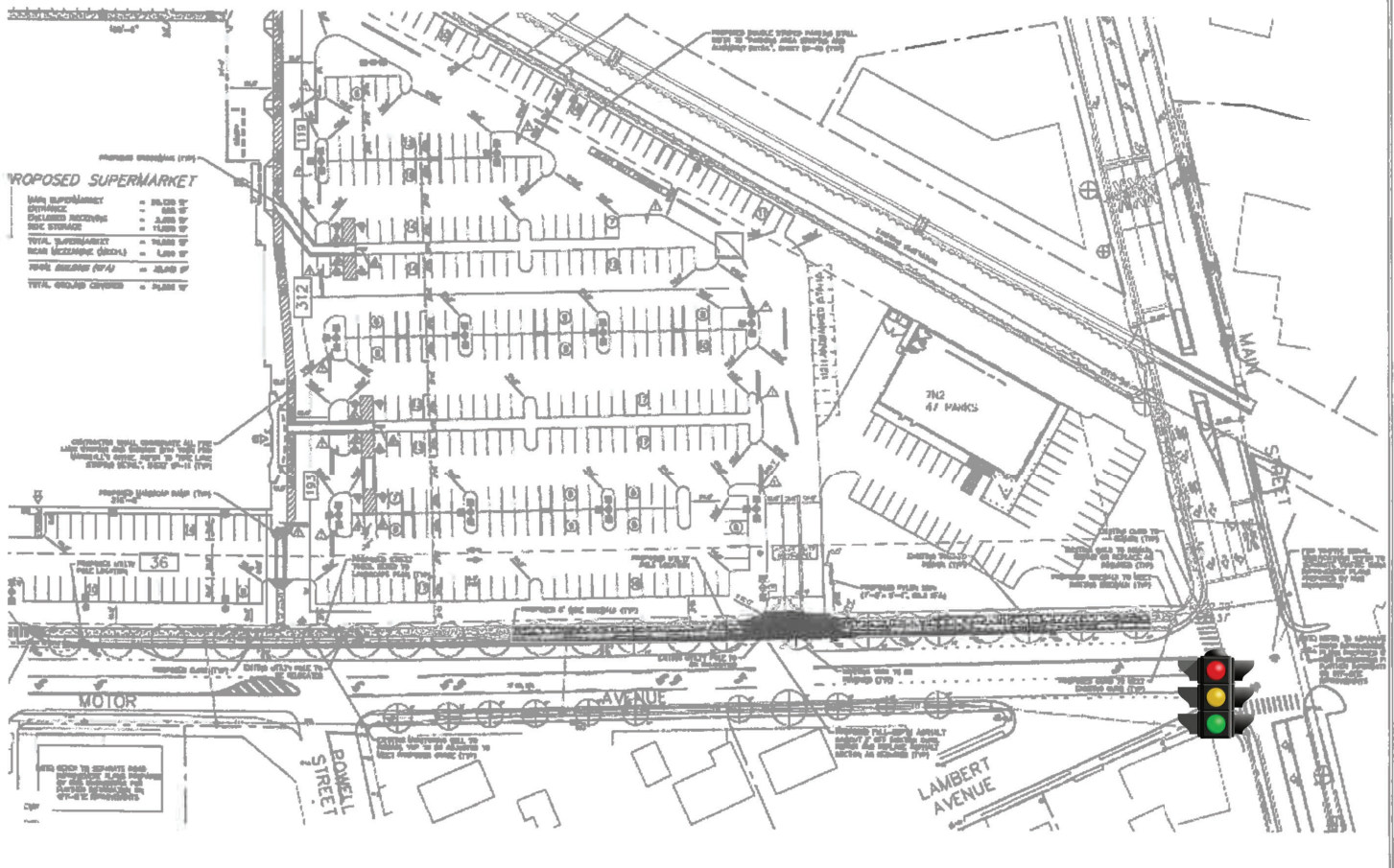
sabre.life

SABRE

farminingdale, ny

55 motor avenue

OUTPARCEL

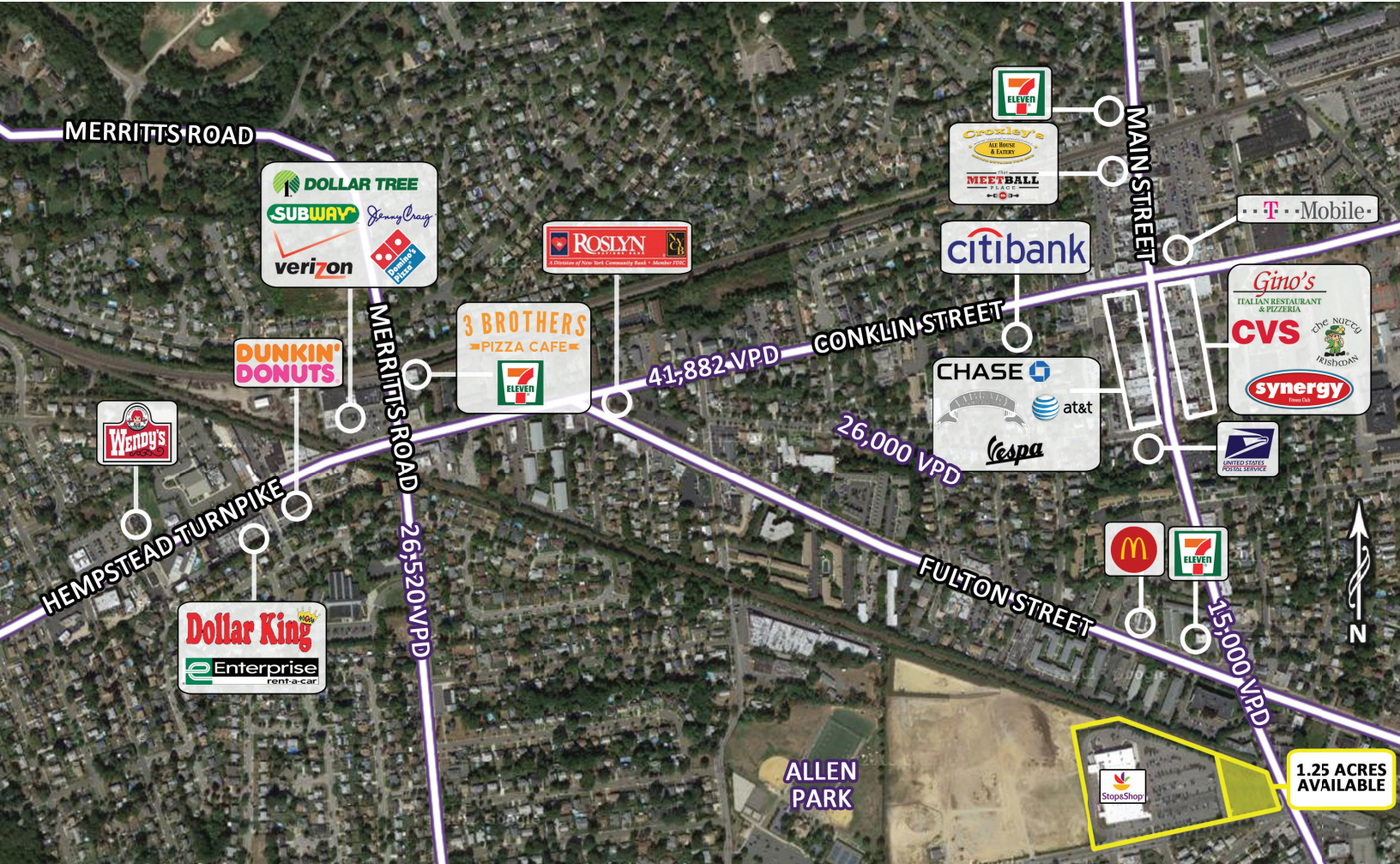


For More Information:
Stu Fagen | fagen@sabre.life | T 516 874 8070 x 1503
sabre.life

SABRE

farminingdale, ny

55 motor avenue



For More Information:

Stu Fagen | fagen@sabre.life | T 516 874 8070 x 1503

Sabre Real Estate Group, LLC

500 Old Country Road Garden City NY 11530

500 Route 17 South Hasbrouck Heights NJ 07604

135 Madison Ave 8th Floor New York NY 10016

sabre.life

© Sabre Real Estate Group, LLC. This information has been obtained from sources believed reliable. We have not verified it and make no guarantee, warranty or representation about it. Any projections, opinions, assumptions or estimates used are for example only and do not represent the current or future performance of the property. You and your advisors should conduct a careful, independent investigation of the property to determine to your satisfaction the suitability of the property for your needs.

SABRE