

# 1448 SOS DRIVE | WALNUT CREEK, CA

## 1,100± SF BUILDING AVAILABLE FOR SALE

OWNER OR INVESTMENT SALE



### CONTACT EXCLUSIVE AGENTS:

**ALEX PECK**

[apeck@lee-associates.com](mailto:apeek@lee-associates.com)

925-239-1414

LIC# 01981426

**MITCH YADEN**

[myaden@lee-associates.com](mailto:myaden@lee-associates.com)

925-737-4152

LIC# 01943445

### FEATURES:

- 1,100± square foot building on a 8,511± square foot lot
- Three (3) private office suites, kitchen, breakroom, two (2) bathrooms, reception/conference room
- Yard/storage area in rear
- Parking: 6:1000
- Close proximity to many restaurants & two (2) BART stations
- Convenient access to I-680 & CA-24
- Freeway visibility off I-680
- Zoning: flexible service-commercial uses, including but not limited to:
  - Adult day care home facilities, animal hospital, animal retail sales & grooming, restaurant, microbrewery, health club, maintenance & repair, personal services
- Sale price: \$699,000.00

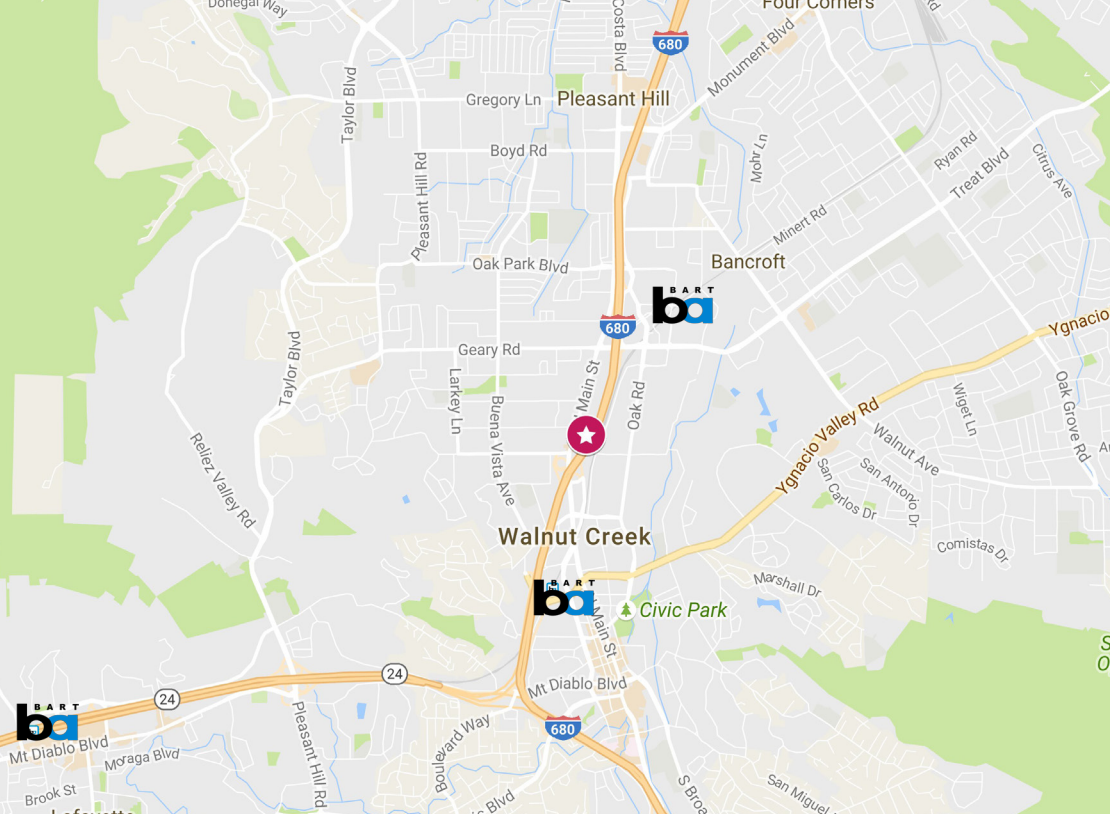
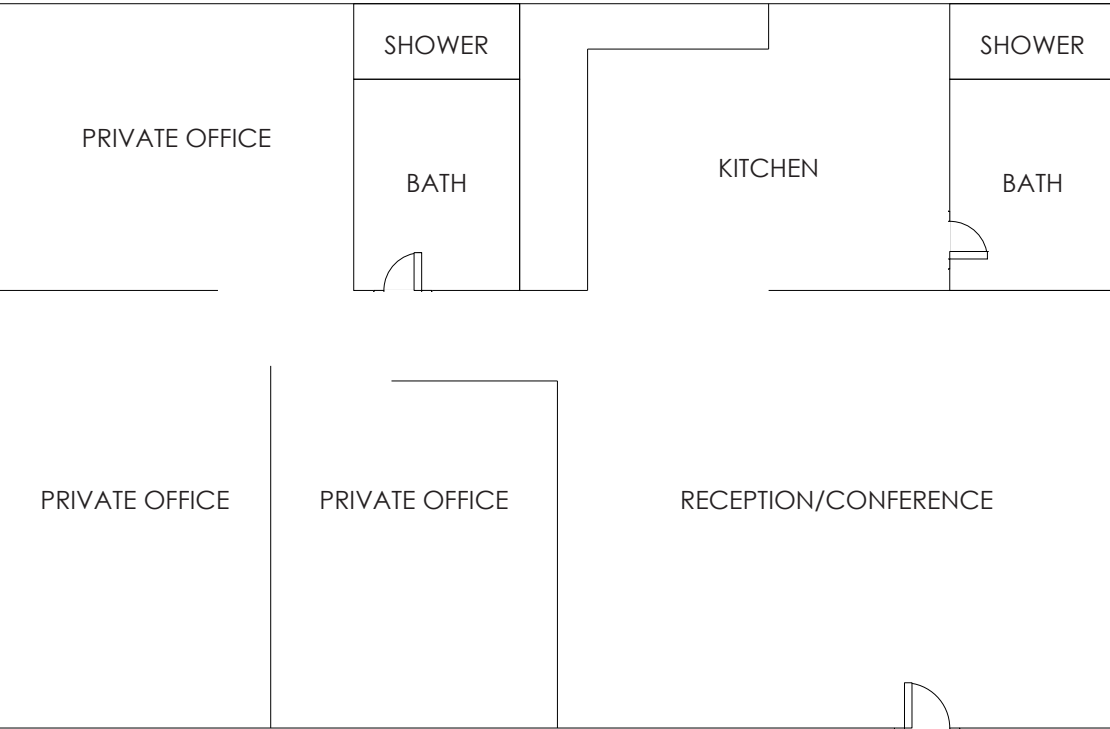


COMMERCIAL REAL ESTATE SERVICES

The information contained herein is based on estimates and assumptions and is presented for illustration purposes only. No representations, warranties or guarantees of any kind are made.

# 1448 SOS DRIVE | WALNUT CREEK, CA

## 1,100± SF BUILDING AVAILABLE FOR SALE



ALEX PECK  
apeck@lee-associates.com  
925-239-1414  
LIC# 01981426

 **LEE & ASSOCIATES**<sup>®</sup>  
COMMERCIAL REAL ESTATE SERVICES

MITCH YADEN  
myaden@lee-associates.com  
925-737-4152  
LIC# 01943445