

2108 NW ROGERS LANE
LAWTON, OK 73505

FOR LEASE

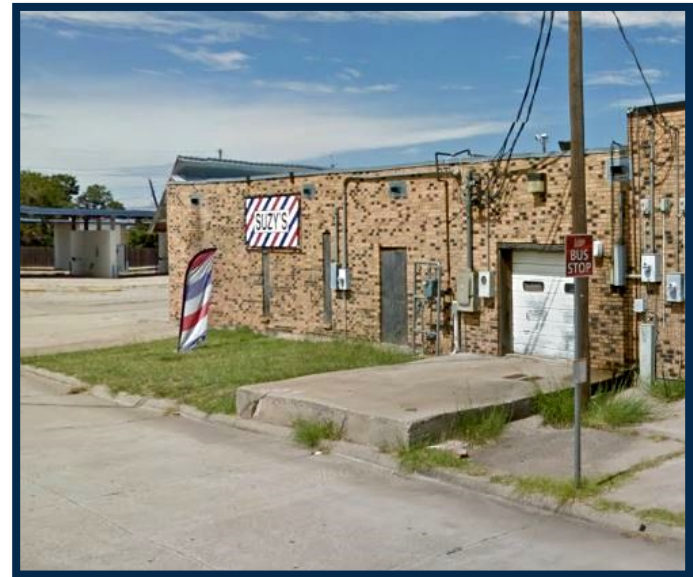
\$650.00/MO.



SIZE: 2,475 sf

ZONING: C-5

Brick construction building for lease on the corner of NW Rogers Lane and NW Sheridan Rd. Tenant is responsible for the finish out. Rent does not start until business is open on a five year lease. There are 42 parking spots. Nearby businesses include Sonic Drive-In, Omega Tech Gaming, EZ-Go gas station and a vapor shop.



LISTED BY: Jason Wells, Broker/Owner

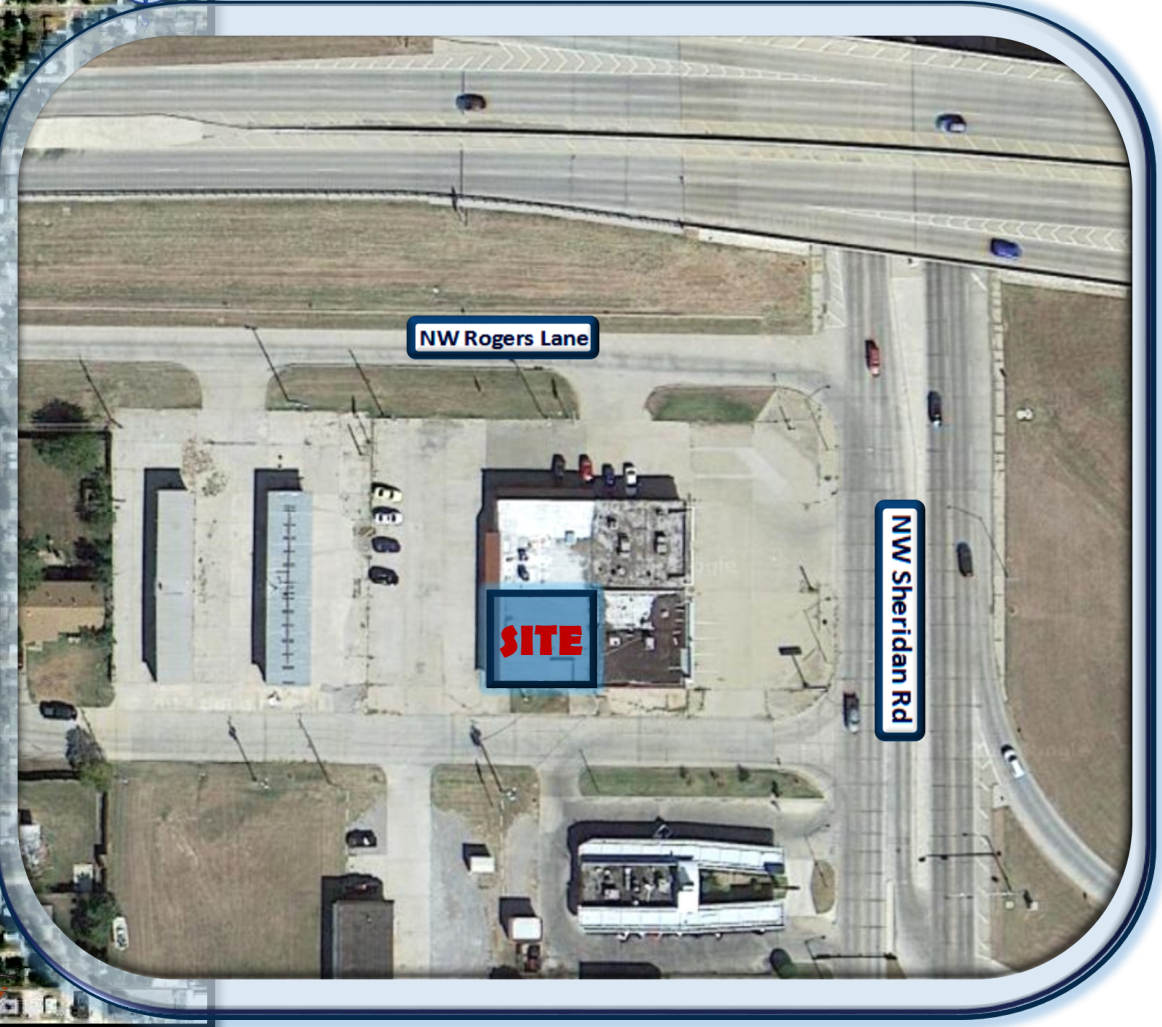
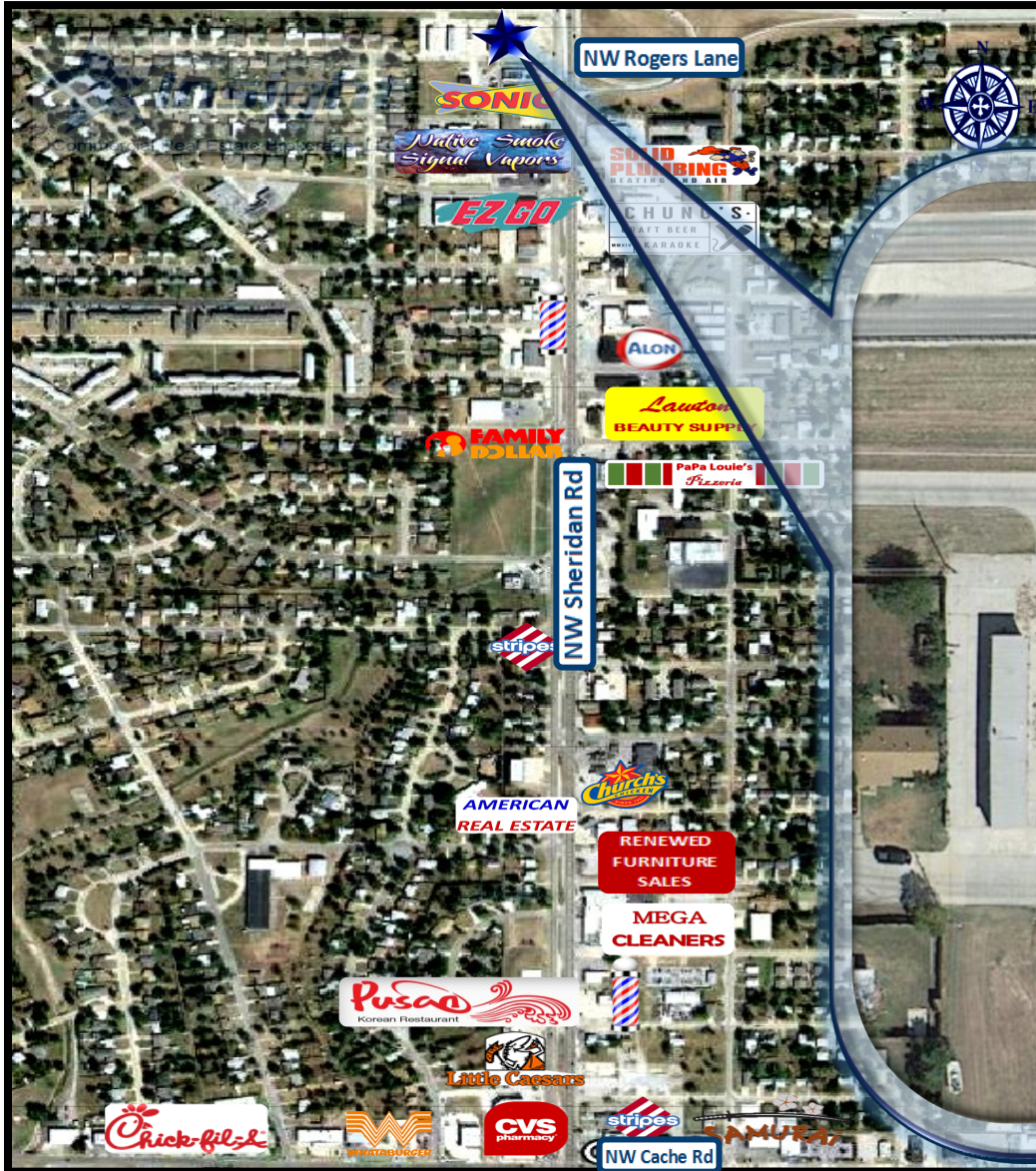
Insight Commercial Real Estate Brokerage, LLC

580.353.6100

2108 NW ROGERS LANE
LAWTON, OK 73505

FOR LEASE

\$650.00/MO.



LISTED BY: Jason Wells, Broker/Owner

Insight Commercial Real Estate Brokerage, LLC

580.353.6100