

# For Lease

## Tacoma Dome Retail



**401 East 25th Street**  
Tacoma, WA



### Features

±900 SF end cap retail available

Well located at the beginning of Link Light Rail and across the street from the Tacoma Dome Sounder Train Station

Within walking distance to Tacoma Dome, Freight House Square and the new Lemay Car Museum

Excellent access to main I-5 arterial, Hwy 705 and Hwy 509

3,500 CPD on East D Street / 12,000 CPD on S 26th Street

\$18.00 PSF, plus NNN

### Contact

**Benjamin A. Norbe**  
253.722.1410  
bnorbe@kiddermathews.com

**Bill Frame, CCIM**  
253.722.1403  
bframe@kiddermathews.com



## 401 East 25th Street



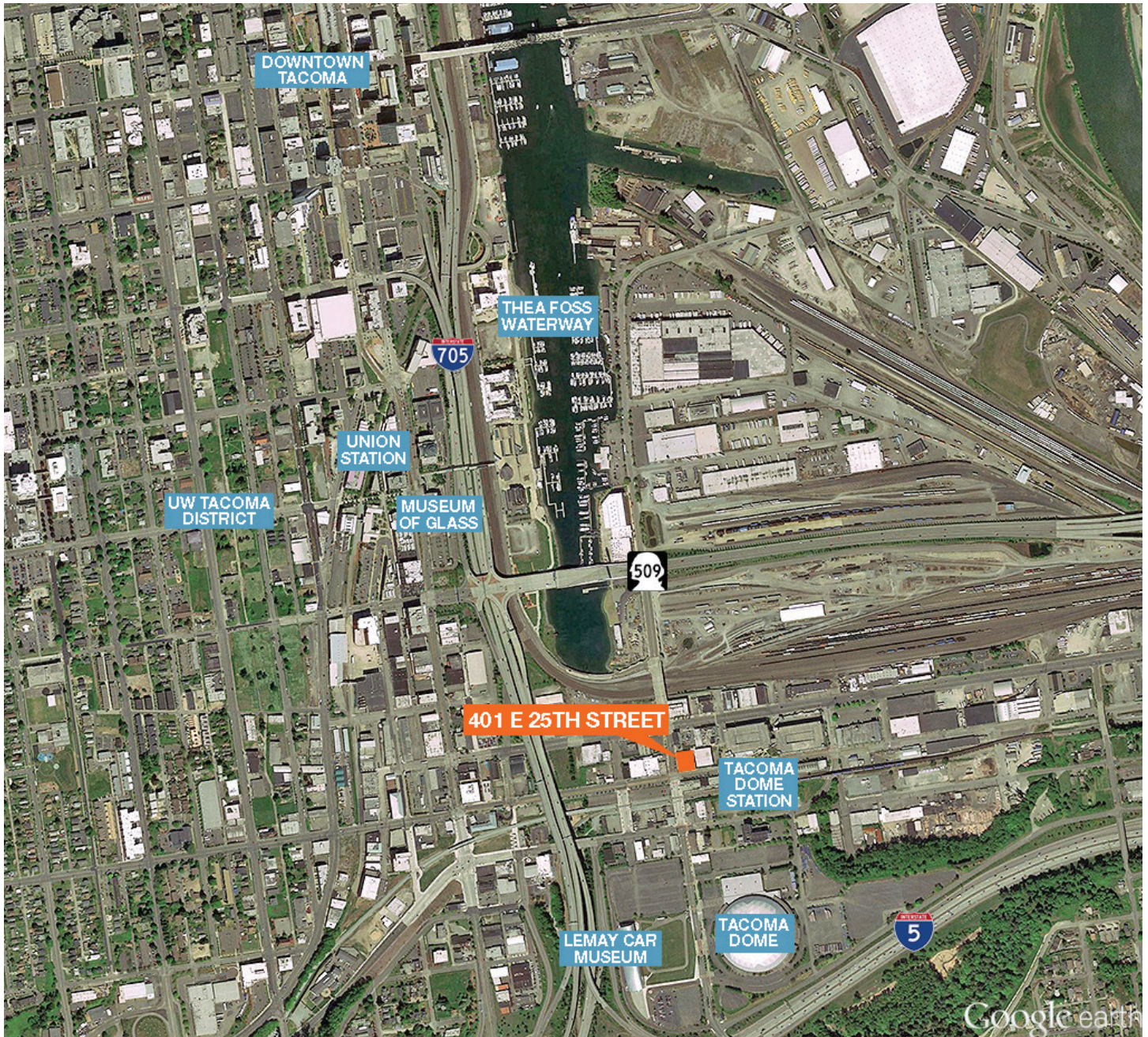
### Contact

**Benjamin A. Norbe**  
253.722.1410  
bnorbe@kiddermathews.com

**Bill Frame, CCIM**  
253.722.1403  
bframe@kiddermathews.com



## 401 East 25th Street



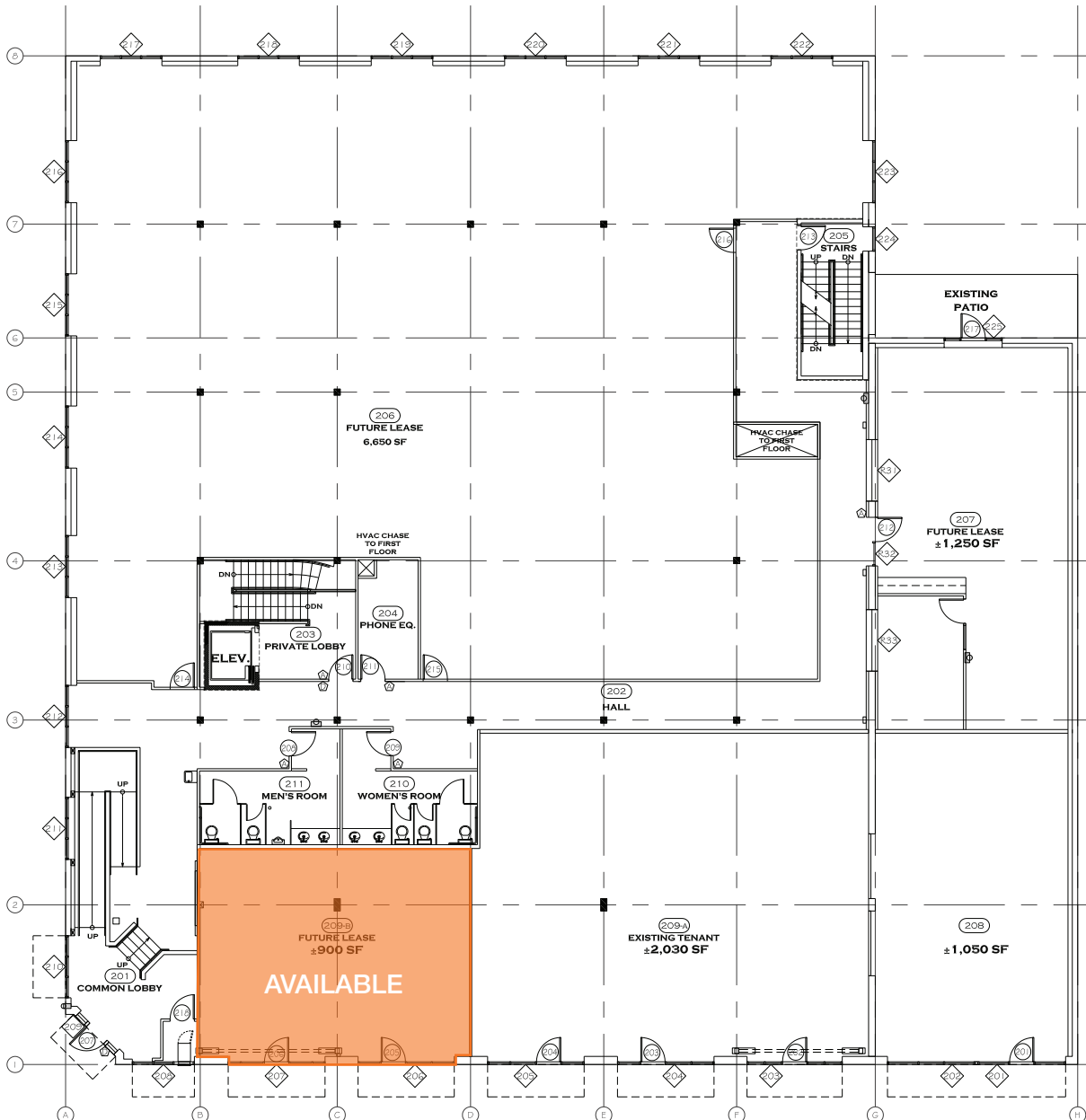
### Contact

**Benjamin A. Norbe**  
253.722.1410  
bnorbe@kiddermathews.com

**Bill Frame, CCIM**  
253.722.1403  
bframe@kiddermathews.com



## 401 East 25th Street



### Contact

**Benjamin A. Norbe**  
253.722.1410  
bnorbe@kiddermathews.com

**Bill Frame, CCIM**  
253.722.1403  
bframe@kiddermathews.com