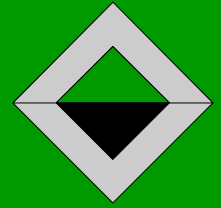


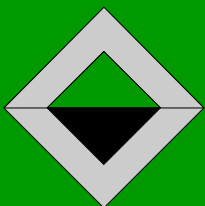
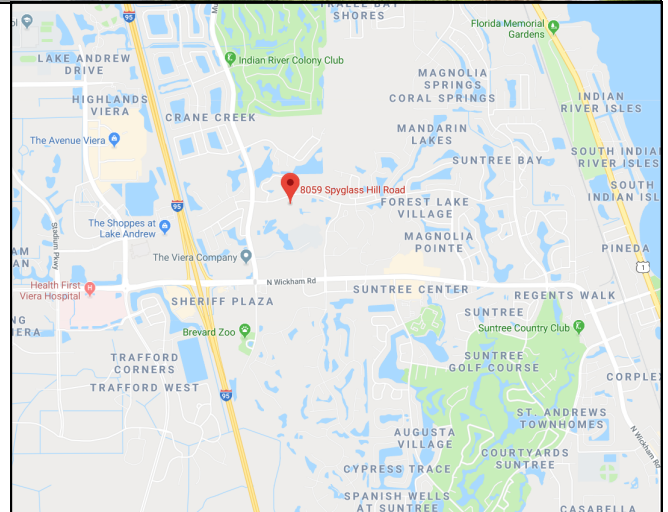
**MEDICAL SPACE FOR LEASE—SUITE 101**

# SPYGLASS SOUTH CONDOMINIUMS

8059 Spynlass Hill Road, Melbourne, FL 32940



- ▲ Prime Location Near Health First Viera Hospital
- ▲ Just off Wickham and Murrell Roads & Near I-95
- ▲ Gorgeous Above Standard Finishes Throughout
- ▲ 2,266 SF of Move-In-Ready Space
- ▲ Reception, Waiting Area, 5 Exam Rooms, Triage, 2 Offices, 2 Restrooms and a Break Room
- ▲ Suite 101 - \$19.75/SF/YR, CAM \$5.37/SF/YR



*Information contained herein has been obtained from others and is considered to be reliable; however, a prospective purchaser, agent, or lessee is expected to verify all information to their satisfaction. We make no guarantee, warranty, or representations herein.*

Licensed Real Estate Broker



**Commercial**

- ▲ Management
- ▲ Leasing
- ▲ Sales

**Leasing Contact:**

**Rebecca Collura**

JM Real Estate, Inc.

Office: 321.242.2882 ext. 210

Cell: 321.768.3750

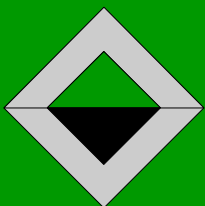
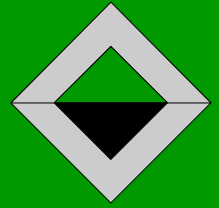
Email: [Rebecca@JMRealEstate.com](mailto:Rebecca@JMRealEstate.com)

[WWW.JMREALESTATE.COM](http://WWW.JMREALESTATE.COM)

**MEDICAL SPACE FOR LEASE—SUITE 101**

# SPYGLASS SOUTH CONDOMINIUMS

8059 Spyglass Hill Road, Melbourne, FL 32940



*Information contained herein has been obtained from others and is considered to be reliable; however, a prospective purchaser, agent, or lessee is expected to verify all information to their satisfaction. We make no guarantee, warranty, or representations herein.*

*Licensed Real Estate Broker*



**Commercial**

▲ **Management**

▲ **Leasing**

▲ **Sales**

Leasing Contact:

**Rebecca Collura**

JM Real Estate, Inc.

Office: 321.242.2882 ext. 210

Cell: 321.768.3750

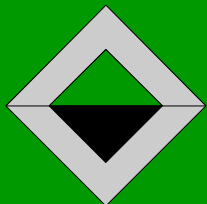
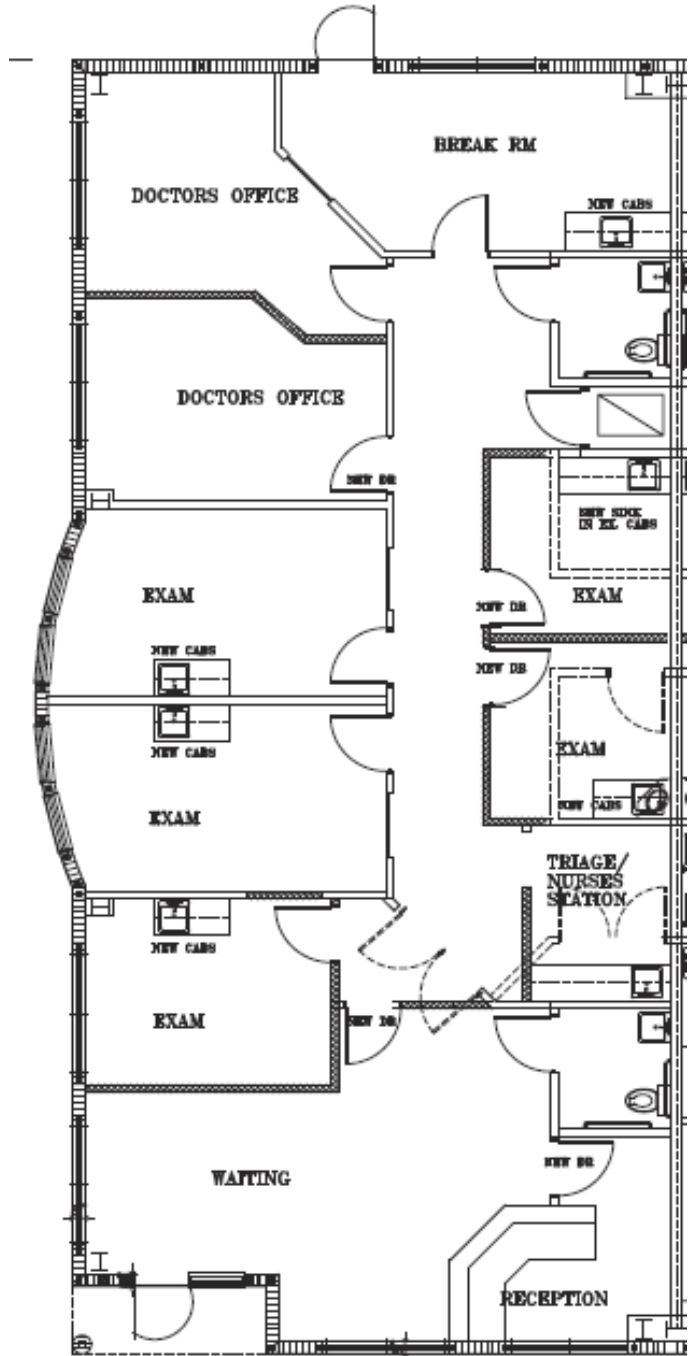
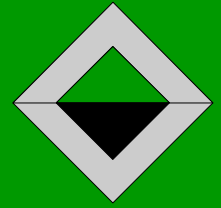
Email: [Rebecca@JMRealEstate.com](mailto:Rebecca@JMRealEstate.com)

[WWW.JMREALESTATE.COM](http://WWW.JMREALESTATE.COM)

MEDICAL SPACE FOR LEASE—SUITE 101

# SPYGLASS SOUTH CONDOMINIUMS

8059 Spyglass Hill Road, Melbourne, FL 32940



*Information contained herein has been obtained from others and is considered to be reliable; however, a prospective purchaser, agent, or lessee is expected to verify all information to their satisfaction. We make no guarantee, warranty, or representations herein.*

Licensed Real Estate Broker



**Commercial**

▲ Management  
▲ Leasing  
▲ Sales

Leasing Contact:

**Rebecca Collura**

JM Real Estate, Inc.

Office: 321.242.2882 ext. 210

Cell: 321.768.3750

Email: [Rebecca@JMRealEstate.com](mailto:Rebecca@JMRealEstate.com)

[WWW.JMREALESTATE.COM](http://WWW.JMREALESTATE.COM)