

\\ \\ Newly Renovated \\ \\
Office Space Available

7th
GATE
CENTER

1601 North 7th Street | Phoenix, Arizona



7th GATE CENTER

1601 North 7th Street | Phoenix, Arizona

Availability

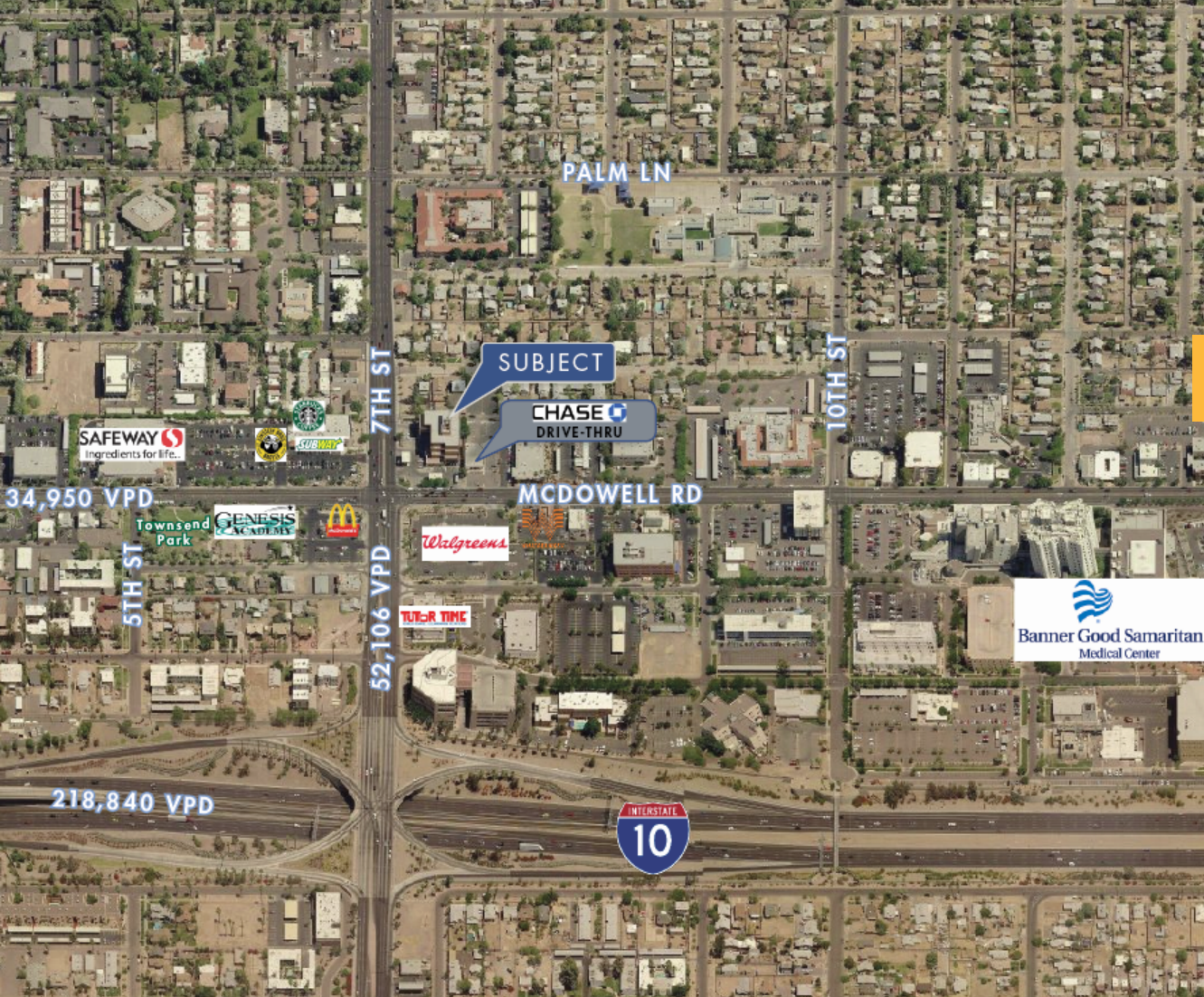
Suite 305 Spec Suite ±905 RSF

Suite G2-100 Spec Suite ±2,262 RSF

Property Highlights

- Newly Renovated Common Areas
- Lit & Secure Underground Parking
- Close Proximity to I-10 and Downtown Phoenix
- Retail Amenities Within Walking Distance
- Monument Sign Available

The information contained herein has been obtained from sources deemed reliable but has not been verified and no guarantee, warranty or representation, either express or implied, is made with respect to such information. Terms of sale or lease and availability are subject to change or withdrawal without notice.



Exclusive Advisors

MICHAEL CRYSTAL ∟∟∟ Managing Director ∟∟∟ 602.952.3878 ∟∟∟ mcrystal@ngkf.com

EMILY CURRIE ∟∟∟ Associate ∟∟∟ 602.952.3828 ∟∟∟ ecurrie@ngkf.com

JOE VALE ∟∟∟ Associate ∟∟∟ 602.952.3873 ∟∟∟ jovale@ngkf.com

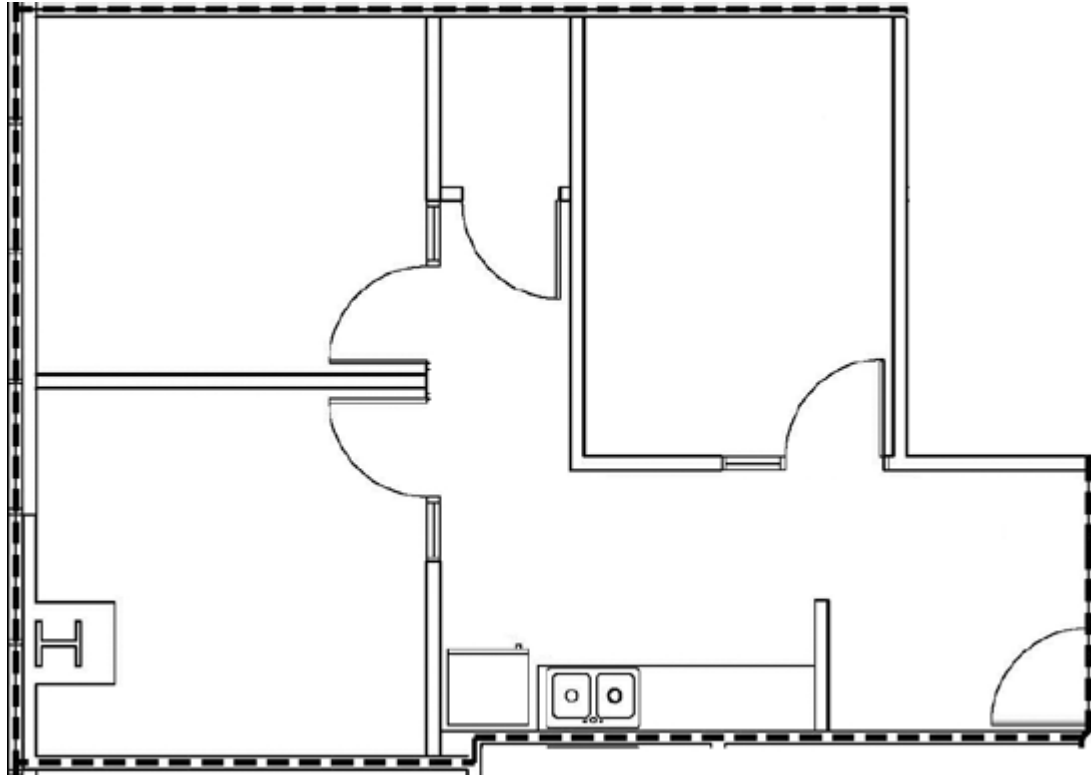
2398 East Camelback Road, Suite 950, Phoenix, Arizona 85016

Main 602.952.3800 Fax 602.952.3801

www.ngkf.com



Spec Suite



7th GATE CENTER

1601 North 7th Street | Phoenix, Arizona

Floor Plans

Suite 305

±905 SF

Spec Suite

Exclusive Advisors

MICHAEL CRYSTAL ||| Managing Director ||| 602.952.3878 ||| mcrystal@ngkf.com

EMILY CURRIE ||| Associate ||| 602.952.3828 ||| ecurrie@ngkf.com

JOE VALE ||| Associate ||| 602.952.3873 ||| jovale@ngkf.com

2398 East Camelback Road, Suite 950, Phoenix, Arizona 85016

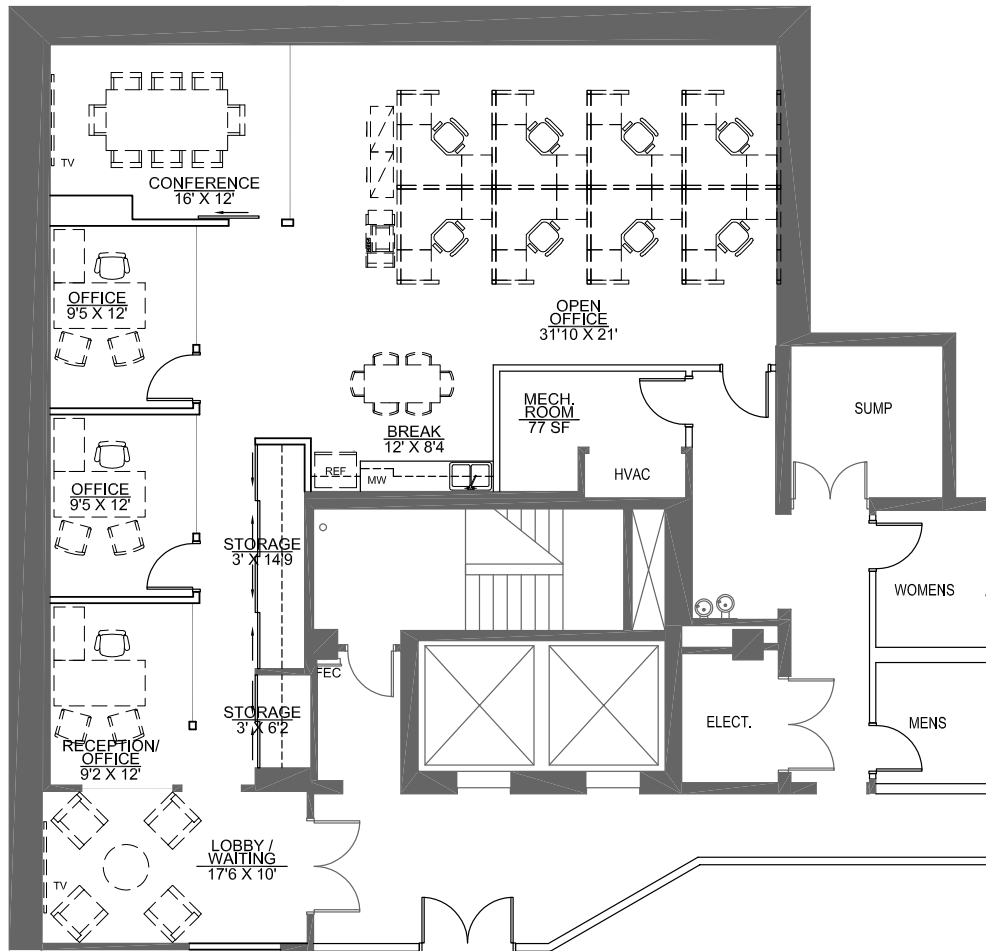
Main 602.952.3800 Fax 602.952.3801

www.ngkf.com



7th GATE CENTER

1601 North 7th Street | Phoenix, Arizona



Floor Plans

Suite G2-100

±2,262 SF

Spec Suite

Suite Features:

- New LED lighting
- Vinyl plank flooring

Exclusive Advisors

MICHAEL CRYSTAL ||| Managing Director ||| 602.952.3878 ||| mcrystal@ngkf.com

EMILY CURRIE ||| Associate ||| 602.952.3828 ||| ecurrie@ngkf.com

JOE VALE ||| Associate ||| 602.952.3873 ||| jovale@ngkf.com

2398 East Camelback Road, Suite 950, Phoenix, Arizona 85016

Main 602.952.3800 Fax 602.952.3801

www.ngkf.com

