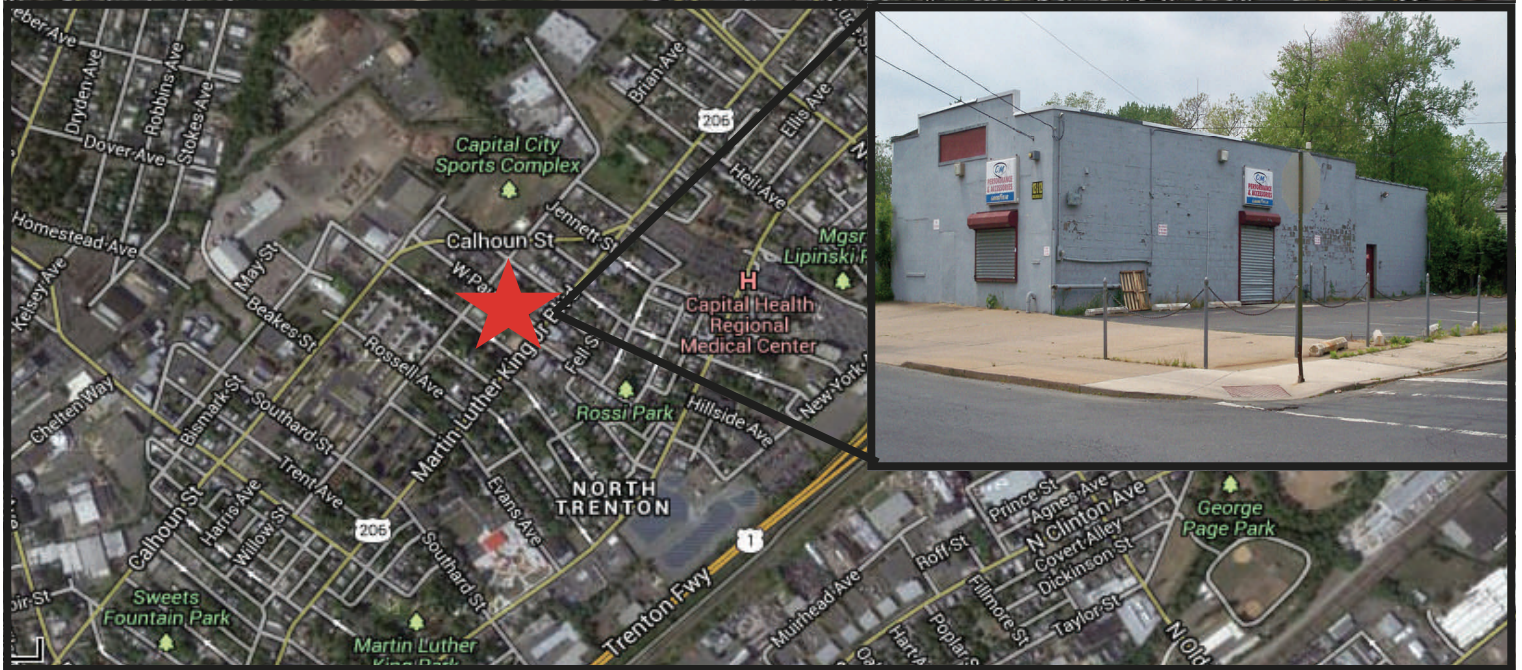


FREESTANDING BUILDING FOR LEASE

1025 Martin Luther King Blvd, Trenton, New Jersey



PROPERTY FEATURES

- 2,400 Square Feet for Lease
- Located at a Corner
- Gross Lease
- **Only \$2,000 per Month**
- Fenced In Corner Lot
- Easy Access to Major Roads including Routes 1, 206 and 33.
- 13' Clear Ceiling Height
- 15+ Car Parking Lot
- High Traffic Place
- Fenced in Corner Lot
- Freestanding Building
- Ideal location for Auto Shop, Retail, Distribution or Food Establishment.

\$2,000 per Month

For Further Information Please Contact Exclusive Broker:

Lance Bram
COMMERCIAL BROKERAGE

David Blake ext. 34
732-545-1850 Office
732-545-1840 Fax
www.lancebram.com