



## FOR LEASE

3311 Bethel Road SE  
Port Orchard, WA 98336



# BETHEL JUNCTION & BETHEL PLACE

Justin Holmes | Josh Parnell | Jamie Firth

First Western Properties—Tacoma Inc. | 253.472.0404  
6402 Tacoma Mall Blvd, Tacoma, WA 98409 | fwp-inc.com

3311 BETHEL ROAD SE:

1,100 SF - 14,610 SF AVAILABLE

\$15.00 - \$24.00 PSF, NNN

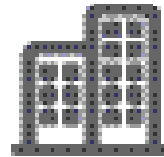
- NNN's are \$7.50 - \$7.82 per square foot
- Anchored by Safeway and Big Lots; other tenants include Starbucks, John L. Scott, UPS Store, Navy Federal Credit Union and more
- Surrounded by strong national tenants such as Walmart, Walgreens, Staples and Rite-Aid
- Great neighborhood community of Port Orchard



Population



Average HH Income

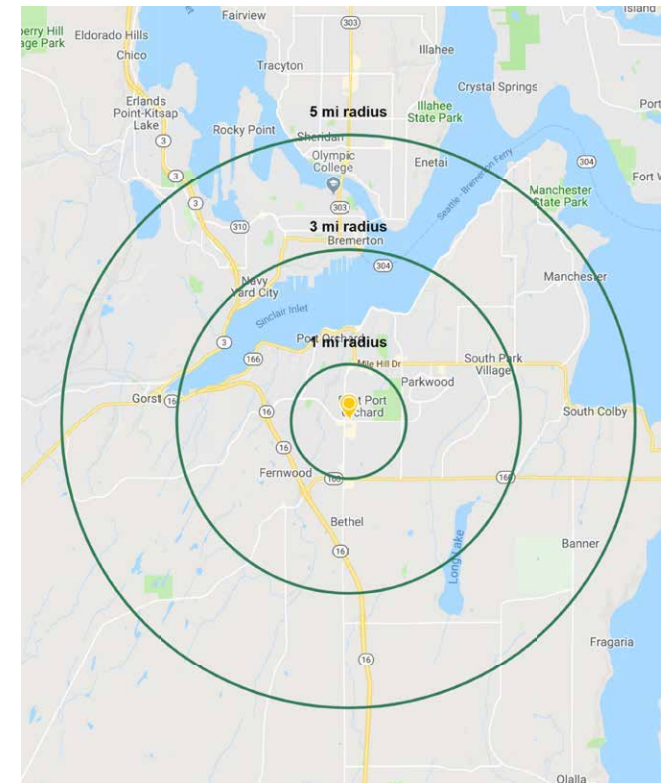


Daytime Population

Regis - 2020

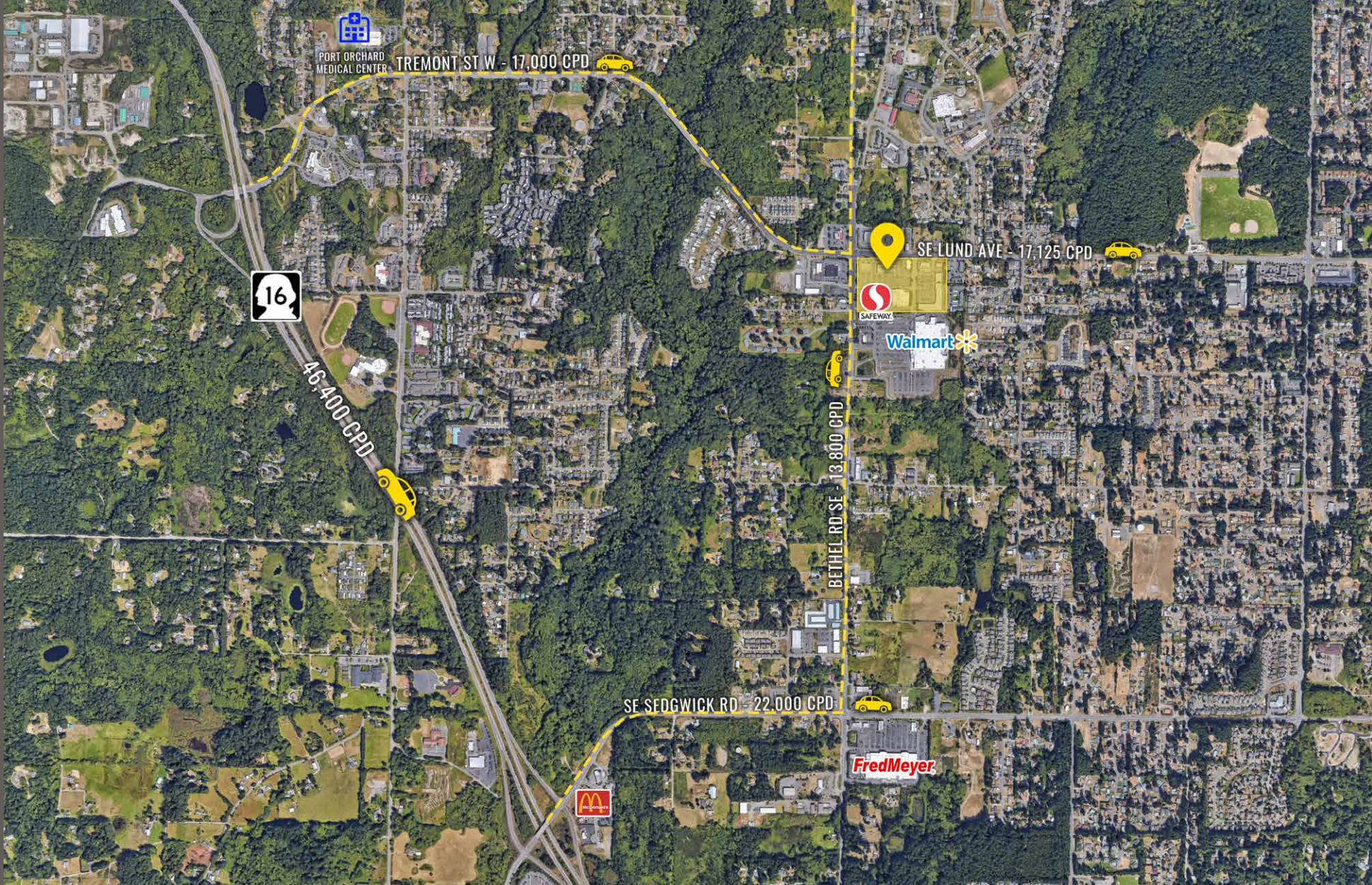
	Population	Average HH Income	Daytime Population
Mile 1	8,645	\$72,758	5,735
Mile 3	40,723	\$78,346	26,885
Mile 5	93,961	\$82,567	60,863

TENANTS





LOCATION DETAILS



Cross access with  
Walmart Super Center



Located moments  
from HWY 16



13,800 CPD  
Bethel Rd SE



17,125 CPD  
SE Lund Avenue

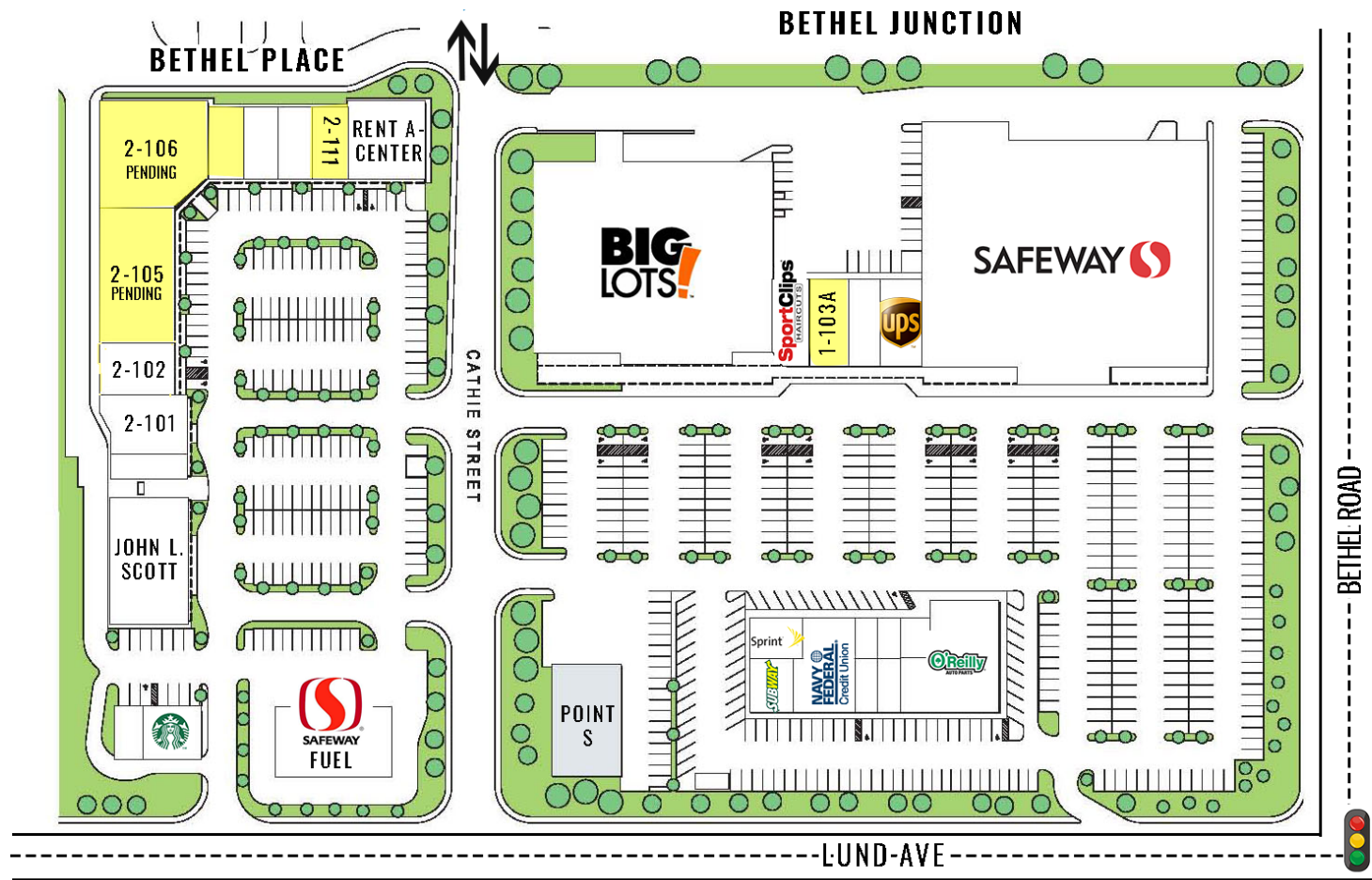


LOCATION AERIAL





# SITE PLAN



## BETHEL PLACE

Suite	Tenant	SF	Rate
2-100	Teriyaki House	1,200	
2-101	Pet Town	2,400	
2-102	El Pueblito	3,600	
<b>2-103 - 2-105</b>	<b>PENDING</b>	<b>6,000</b>	<b>PENDING</b>
<b>2-106</b>	<b>PENDING</b>	<b>8,610</b>	<b>PENDING</b>
2-108	Sassy Nails	1,100	
2-109	Men's Club Barber Shop	1,100	
2-110	Smoke Shop	1,100	
<b>2-111</b>	<b>AVAILABLE</b>	<b>1,100</b>	<b>\$20.00 PSF, NNN</b>
2-115	Rent-A-Center	4,700	
	Starbucks	1,400	
2-B	T-Mobile	675	
	John L. Scott	5,928	

## BETHEL JUNCTION

Suite	Tenant	SF	Rate
1-101	Safeway	54,765	
1-102	Big Lots	31,472	
<b>1-103A</b>	<b>AVAILABLE</b>	<b>1,543</b>	<b>\$26.00 PSF, NNN</b>
1-103B	Sport Clips	1,406	
1-105	Amy's Cleaners	1,400	
1-107	The UPS Store	1,400	
1-4A	O'Reilly Auto Parts	6,150	
1-5A	Nilsson Hearing Aid Clinic	750	
1-6A	Jones Chiropractic	900	
1-7AB	Navy Federal Credit Union	3,199	
1-9A	Subway	1,380	
1-4B	Liberty Tax	875	
1-5B	ZeHaira Salon	750	
1-6B	Lovely Nails	600	
1-9B	Sprint	1,451	
1-8A	Point S	5,442	





**PORT ORCHARD, WA** is located on the Kitsap Peninsula and is a perfect destination for boaters and water sports – featuring a nationally recognized water trail for paddlers. The Downtown scene is built with a collection of eclectic boutiques, antiques, and collectible shops where shoppers can find a mix of designer and retro goods. The views of the Olympic Mountains and the serene landscape allow visitors and residents to enjoy all that Port Orchard has to offer.

TACOMA | KIRKLAND | PORTLAND | SEATTLE



# RELATIONSHIP FOCUSED. RESULTS DRIVEN.

**JUSTIN HOLMES**

253.447.2282  
justin@firstwesternproperties.com

**JOSH PARNELL**

253.284.3630  
josh@firstwesternproperties.com

**JAMIE FIRTH**

253.284.3649  
jamie@firstwesternproperties.com



First Western Properties—Tacoma Inc. | 253.472.0404  
6402 Tacoma Mall Blvd, Tacoma, WA 98409 | fwp-inc.com

© First Western Properties, Inc. DISCLAIMER: The above information has been secured from sources believed to be reliable, however, no representations are made to its accuracy. Prospective tenants or buyers should consult their professional advisors and conduct their own independent investigation. Properties are subject to change in price and/or availability without notice.