

OFFICE BUILDING FOR LEASE

3300 Webster Street, Oakland, CA 94609



SONNY O'DROBINAK

Dir: 925.296.3303

Cell: 925.788.7851

sonny.odrobinak@tricommercial.com

CalDRE #00632311

PAUL O'DROBINAK

Dir: 925.296.3304

Cell: 925.708.9182

paul.odrobinak@tricommercial.com

CalDRE #01983402

TRI Commercial Real Estate Services 1777 Oakland Blvd, Suite 220, Walnut Creek, CA 94596



FOR LEASE OFFICE BUILDING

EXECUTIVE SUMMARY

3300 Webster Street



OFFERING SUMMARY

Available SF:
1,123 SF
1,021 SF
682 SF
1,028 SF

Lease Rate: Negotiable

Lot Size: 2.25 Acres

Building Size: 98,219 SF

Zoning: D-BV-3/N

PROPERTY OVERVIEW

Office Medical Class A ADA compliant building located in Pill Hill.

PROPERTY HIGHLIGHTS

- Six story parking structure with 416 space, separate annex for medical office or retail space on Broadway
- Pharmacy, lab, and radiology located within building, along with a coffee shop on the ground floor

FOR LEASE OFFICE BUILDING

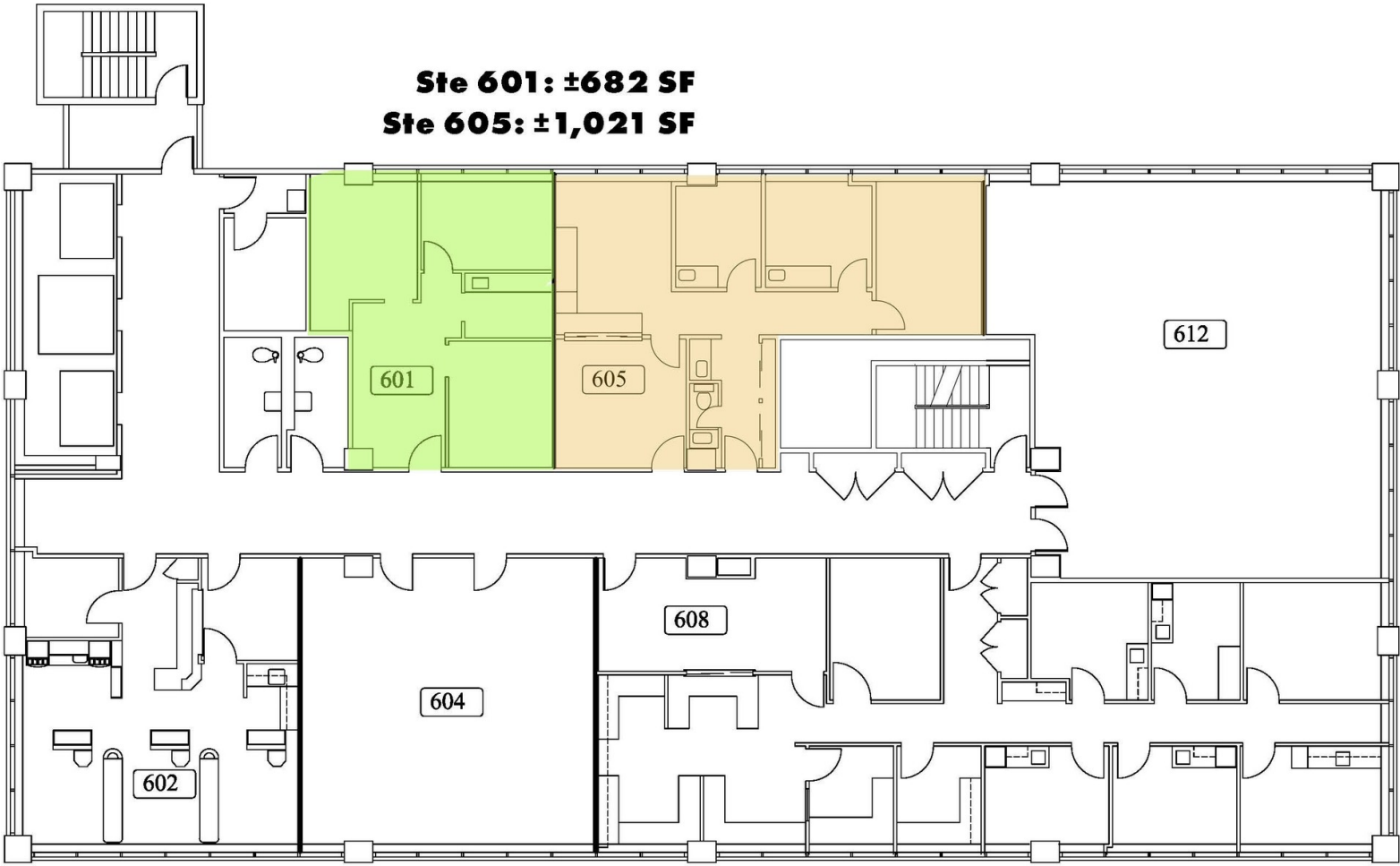
ADDITIONAL PHOTOS
3300 Webster Street



FOR LEASE SUITE 605

FLOOR PLANS
3300 Webster Street

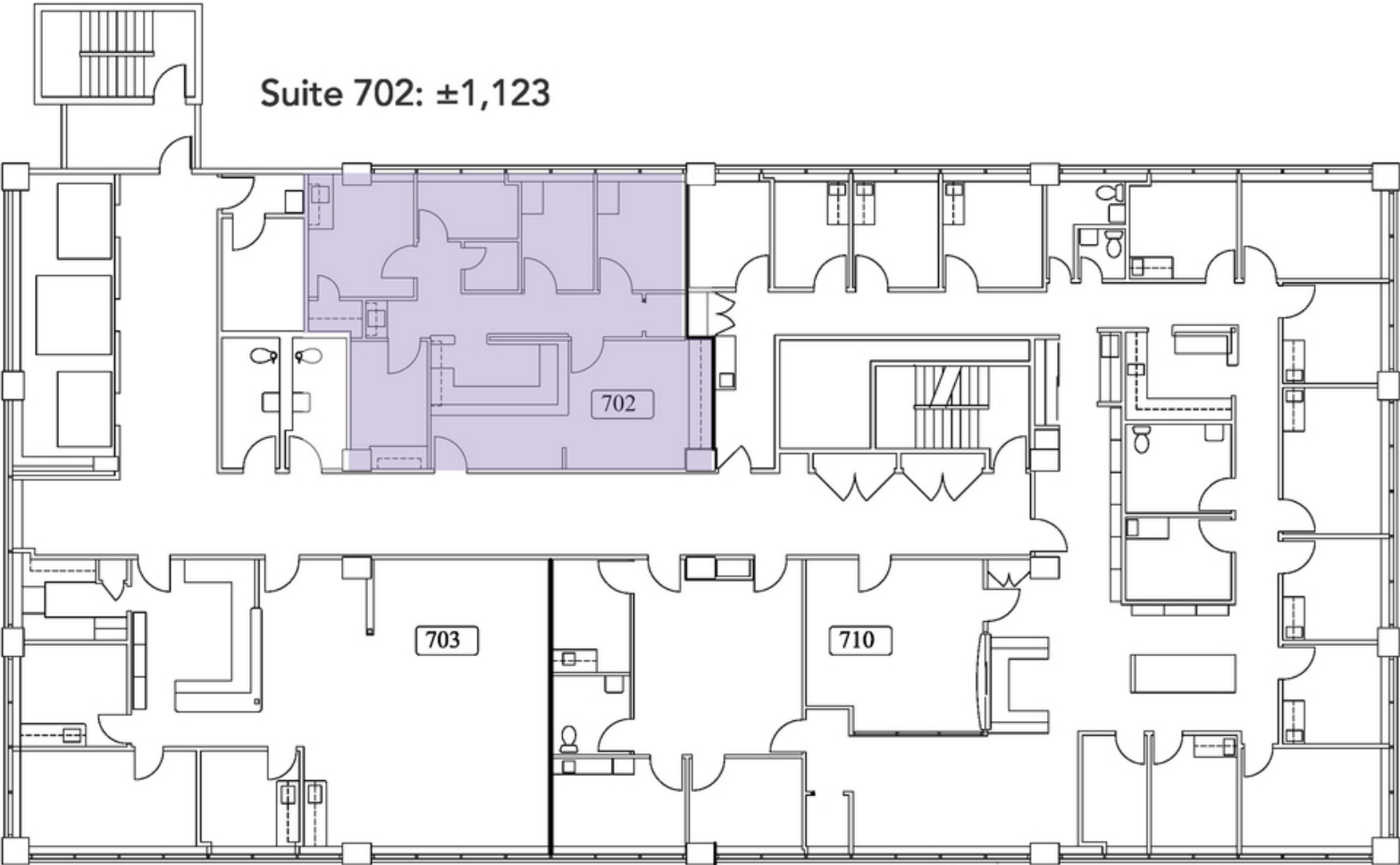
Ste 601: ±682 SF
Ste 605: ±1,021 SF



FOR LEASE SUITE 702

FLOOR PLANS
3300 Webster Street

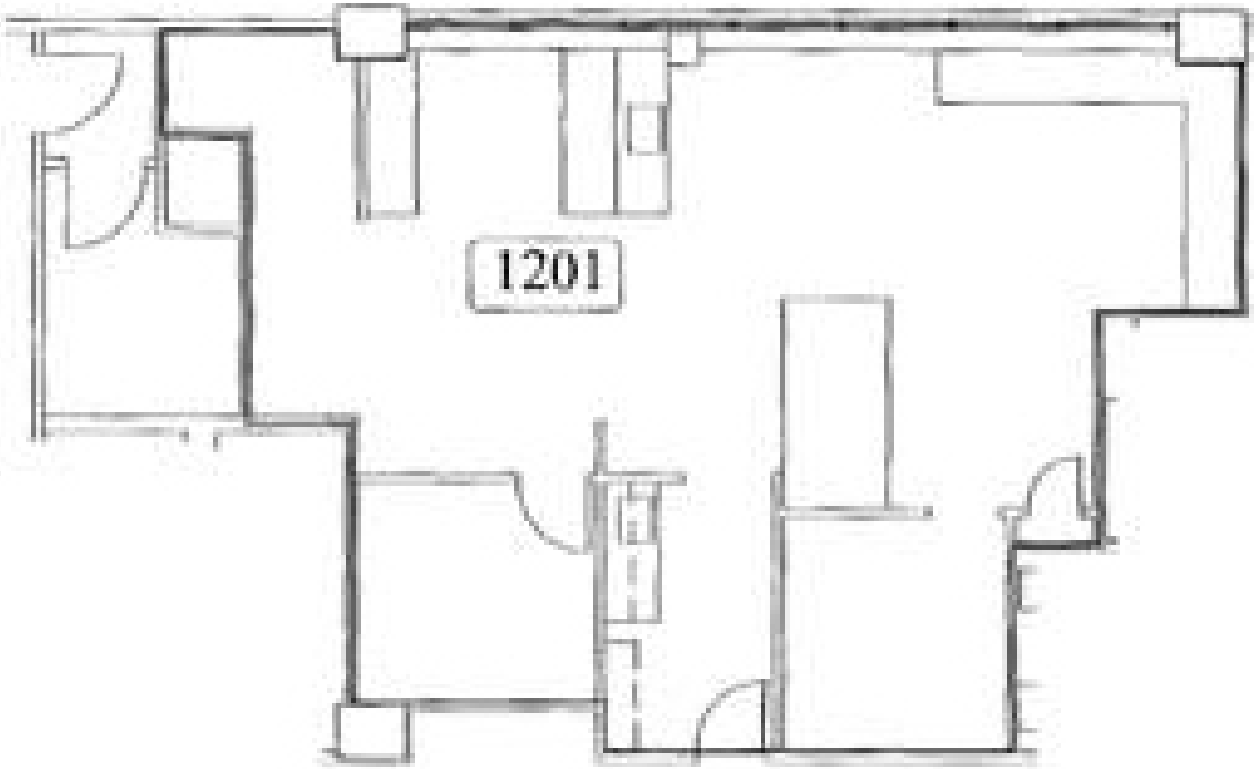
Suite 702: ±1,123



The information in this document was obtained from sources we deem reliable; however, no warranty or representation, expressed or implied, is made as to the accuracy of the information contained herein.

**FOR LEASE
SUITE 1201**

FLOOR PLANS
3300 Webster Street

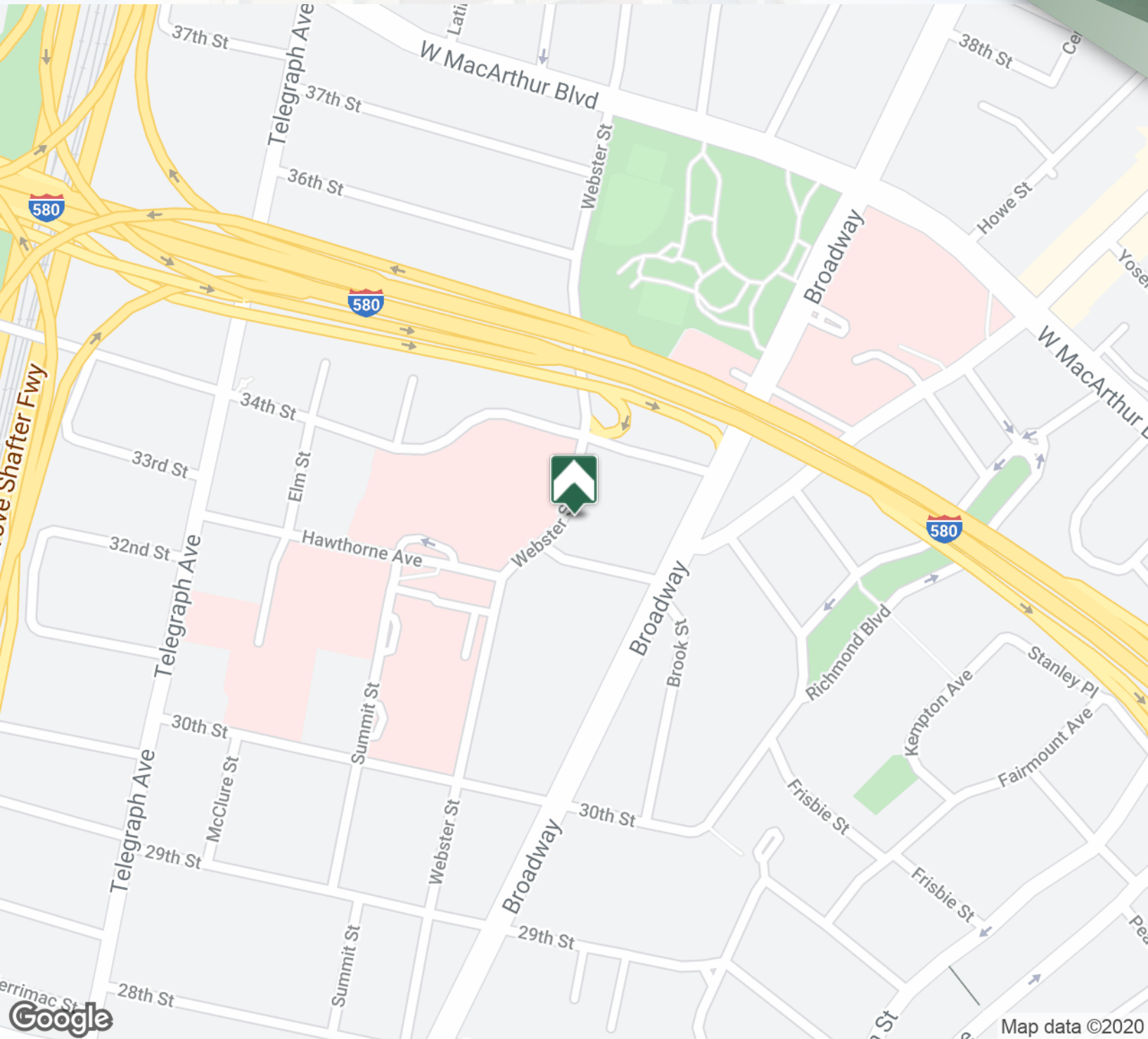


Suite 1201: ±1,028 SF

The information in this document was obtained from sources we deem reliable; however, no warranty or representation, expressed or implied, is made as to the accuracy of the information contained herein.

FOR LEASE OFFICE BUILDING

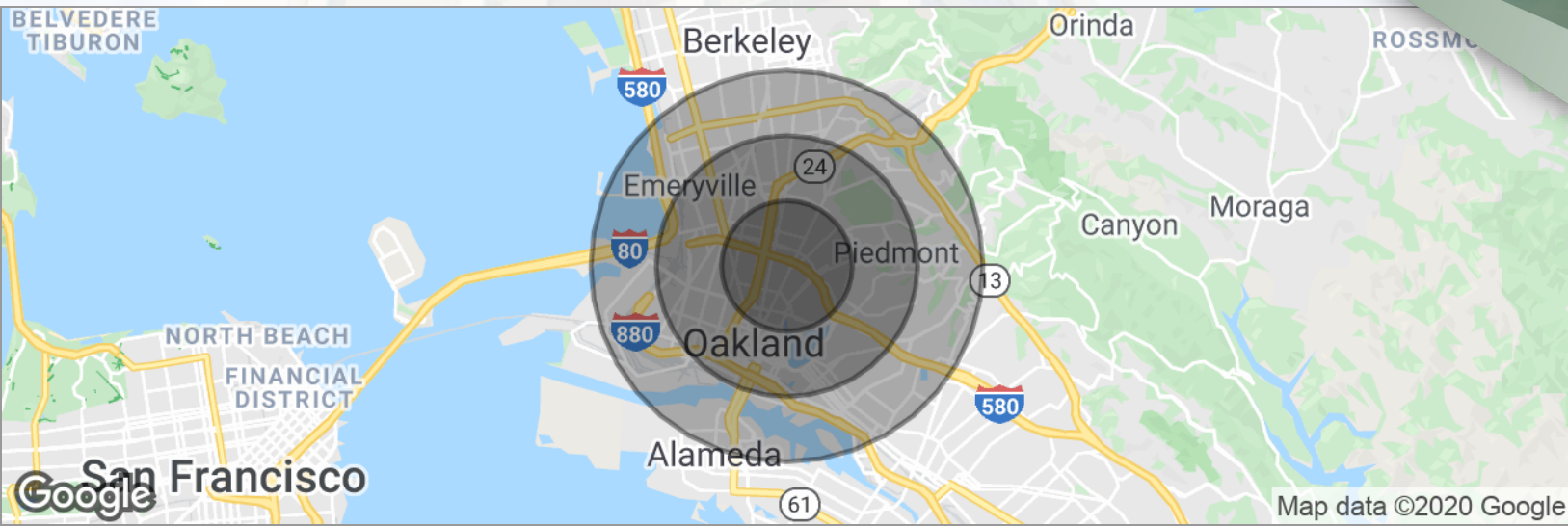
LOCATION MAPS
3300 Webster Street



FOR LEASE OFFICE BUILDING

DEMOGRAPHICS MAP

3300 Webster Street



POPULATION

	1 MILE	2 MILES	3 MILES
Total population	48,518	151,102	269,660
Median age	36.8	38.2	37.3
Median age (Male)	36.0	37.3	36.4
Median age (Female)	37.5	38.7	38.1

HOUSEHOLDS & INCOME

	1 MILE	2 MILES	3 MILES
Total households	26,376	76,729	125,987
# of persons per HH	1.8	2.0	2.1
Average HH income	\$60,951	\$69,737	\$78,107
Average house value	\$493,137	\$627,400	\$650,991

* Demographic data derived from 2010 US Census



Sonny O'Drobinak

Dir: 925.296.3303

Cell: 925.788.7851

sonny.odrobinak@tricommercial.com

CalDRE #00632311



Paul O'Drobinak

Dir: 925.296.3304

Cell: 925.708.9182

paul.odrobinak@tricommercial.com

CalDRE #01983402



TRI Commercial Real Estate Services

1777 Oakland Blvd Suite 220, Walnut Creek, CA 94596

Dir: 925.296.3300

Fax: 925.296.3399

www.tricommercial.com

