



**200**  
NORTH WARNER  
AT KING OF PRUSSIA

CONNECTING TOMORROW'S WORKPLACE TODAY





200 N. Warner Rd.

The Village at Valley Forge





**EXISTING ENTRANCE**



**PROPOSED ENTRANCE**



**INSPIRATION IMAGES**

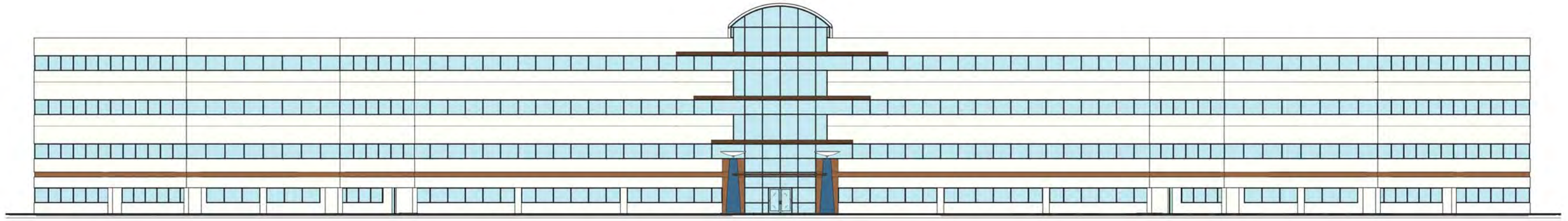


**EXISTING CORNER**



**PROPOSED CORNER & REAR ENTRANCE**

**EXTERIOR SKETCHES**



EXISTING ELEVATION



PROPOSED ELEVATION



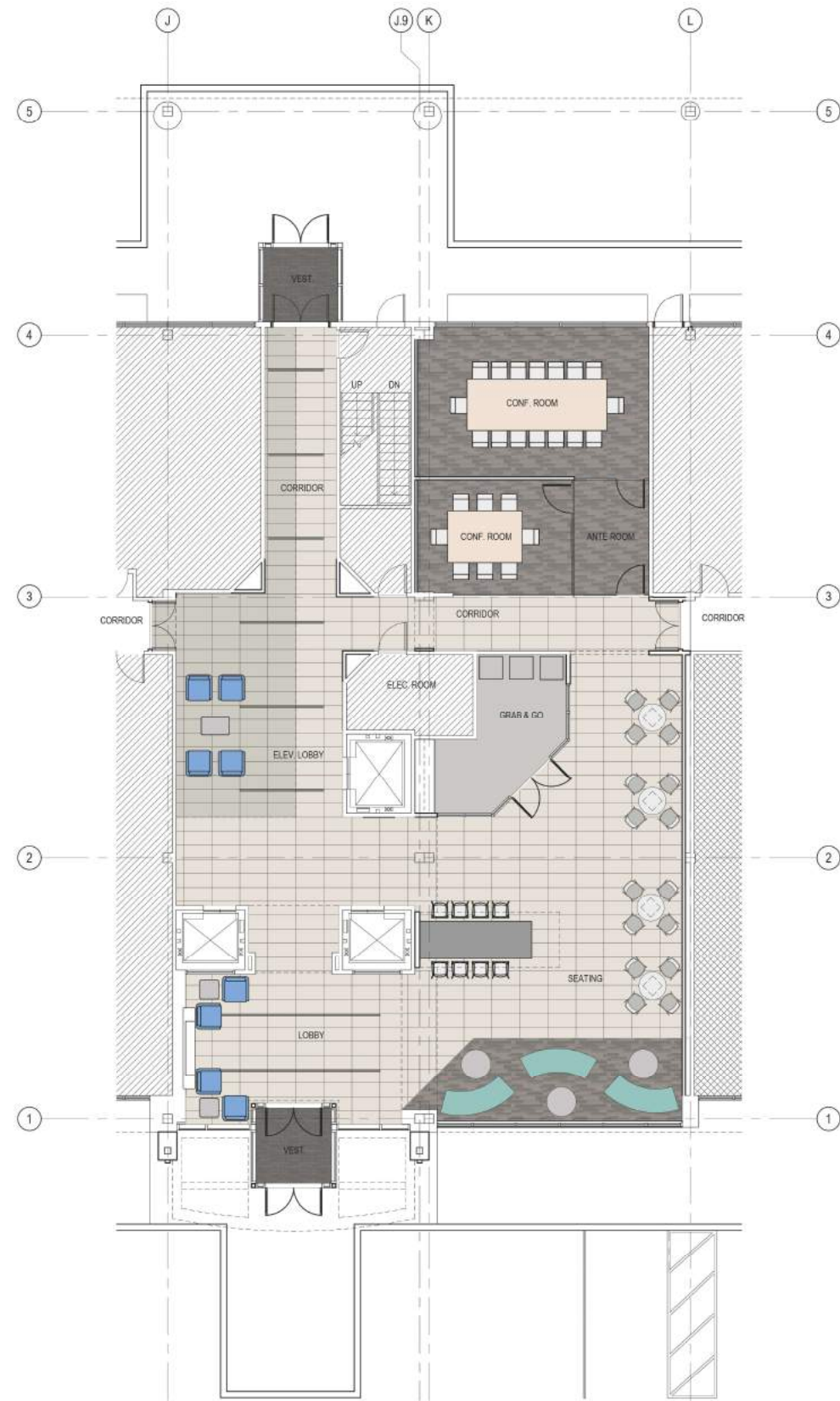
EXTERIOR RENDERING - FRONT VIEW





EXTERIOR RENDERING - SIDE VIEW





**PROPOSED LOBBY PLAN**



**ELEVATOR LOBBY**



**BUILDING LOUNGE**



ELEVATOR LOBBY



BUILDING LOUNGE



RESTROOM WALLCOVERING AT LAVATORY



LOBBY TILE ACCENT 1

LOBBY TILE

LOBBY ACCENT TILE 2



ATRIUM PENDANT LIGHT



BUILDING LOUNGE SEATING



LOBBY LIGHTING

FLOOR AT 9/10/15/20



LOBBY LOUNGE LIGHTING



TYPICAL CORRIDOR AND CONFERENCE ROOM



ELEVATOR LOBBY ACCENT CARPET



LOBBY LOUNGE CARPET



HAND DRYER



RESTROOM FAUCET



AUTO SOAP DISPENSER



TOILET WATERWALL MOSAIC TILE

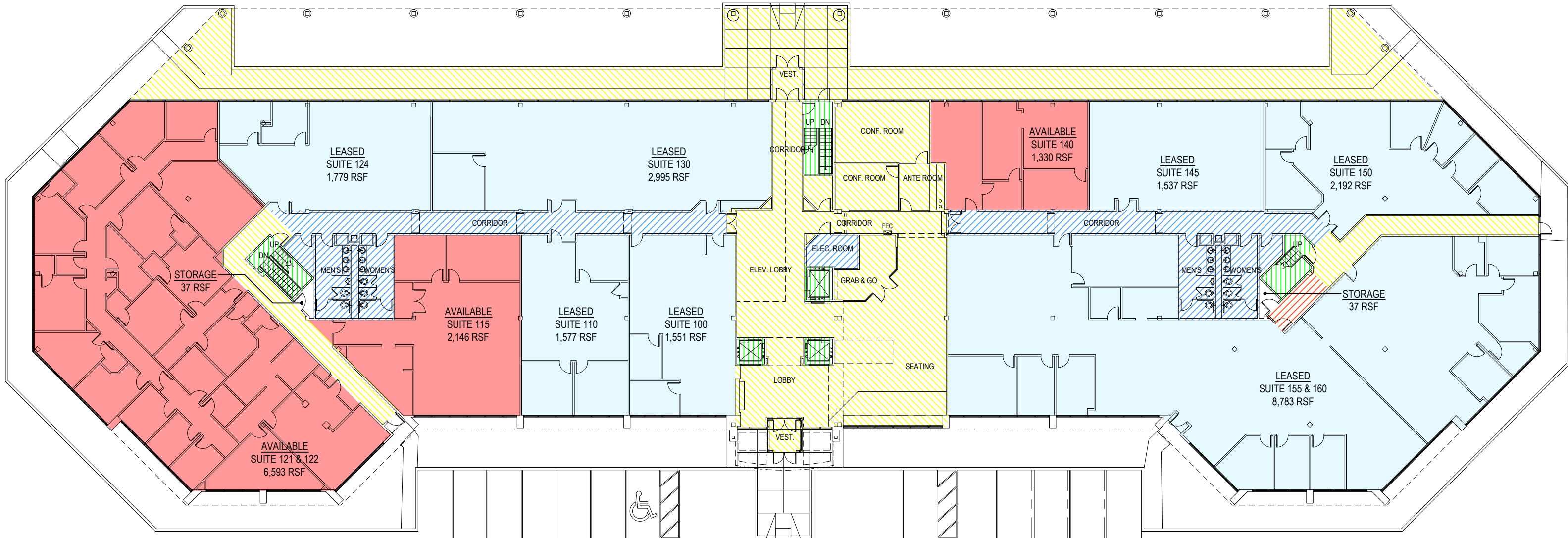


RESTROOM FLOOR TILE 12" X 24"

INTERIOR LOBBY RENDERINGS







- AVAILABLE
- LEASED
- NON-RENTABLE AREA
- BUILDING COMMON AREA
- FLOOR COMMON AREA
- FLEXIBLE USEABLE AREA

## FIRST FLOOR

Date: September 14, 2017



September 14, 2017 | 610.649.8500 | www.meyerdesigninc.com  
 (c) Copyright 2017 Meyer Design, Inc./ Meyer Architects, Inc. All Rights Reserved





## SECOND FLOOR

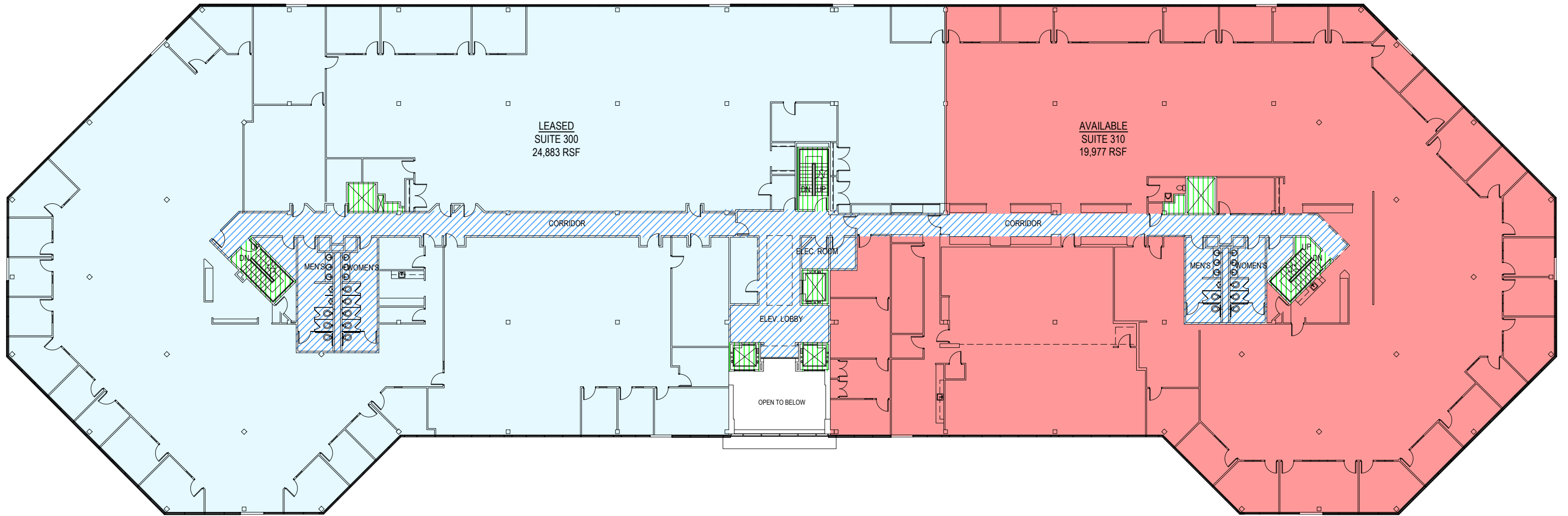
- AVAILABLE
- LEASED
- NON-RENTABLE AREA
- BUILDING COMMON AREA
- FLOOR COMMON AREA
- FLEXIBLE USEABLE AREA

Date: September 14, 2017



September 14, 2017 | 610.649.8500 | www.meyerdesigninc.com  
 (c) Copyright 2017 Meyer Design, Inc./ Meyer Architects, Inc. All Rights Reserved





THIRD FLOOR

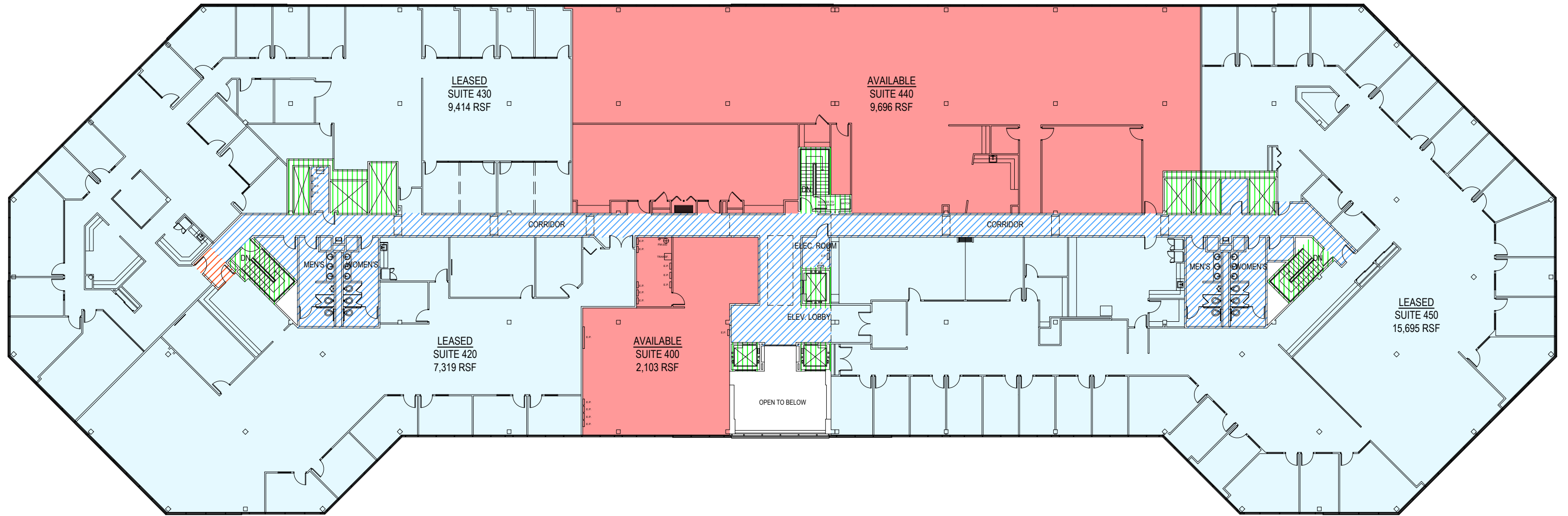
- AVAILABLE
- LEASED
- NON-RENTABLE AREA
- BUILDING COMMON AREA
- FLOOR COMMON AREA
- FLEXIBLE USEABLE AREA

Date: September 14, 2017



September 14, 2017 | 610.649.8500 | www.meyerdesigninc.com  
 (c) Copyright 2017 Meyer Design, Inc./ Meyer Architects, Inc. All Rights Reserved





## FOURTH FLOOR

- AVAILABLE
- LEASED
- NON-RENTABLE AREA
- BUILDING COMMON AREA
- FLOOR COMMON AREA
- FLEXIBLE USEABLE AREA

Date: September 14, 2017

