



For Lease

**1035 Virginia Drive
Fort Washington, PA**

Availability:

- 1st floor – 9,816 s.f. (5,246 s.f. & 4,570 s.f.)
- 2nd floor - 3,025 s.f.

Property highlights:

- Minutes from restaurants, public transportation and banking
- Excellent access from PA Turnpike off the Virginia Drive slip ramp
- Rate: \$19.50/s.f. plus electric

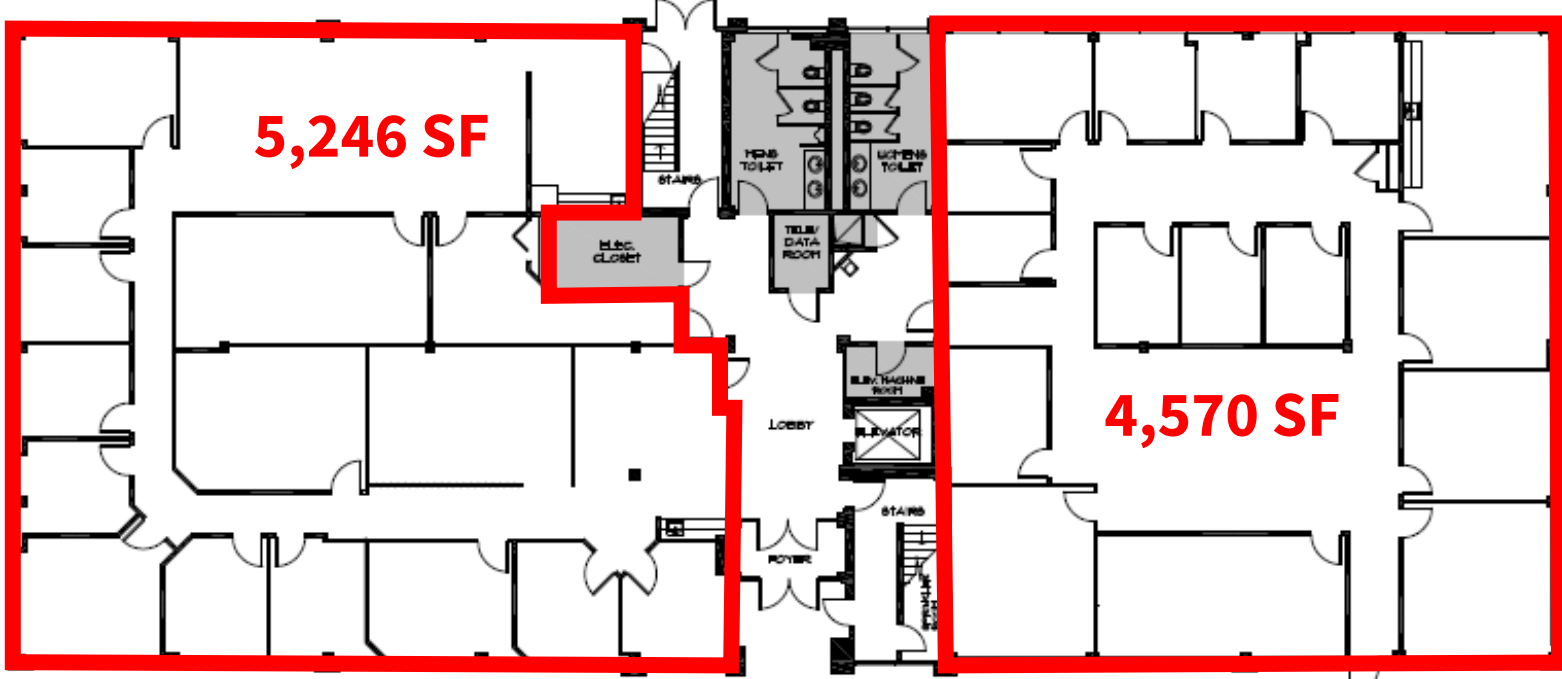
Doug Newbert
Executive Vice President
+1 610 249 2273
doug.newbert@am.jll.com

JLL | Jones Lang LaSalle
1235 Westlakes Drive
Suite 210
Berwyn, PA 19312
+1 610 249 2255
www.jll.com/philadelphia

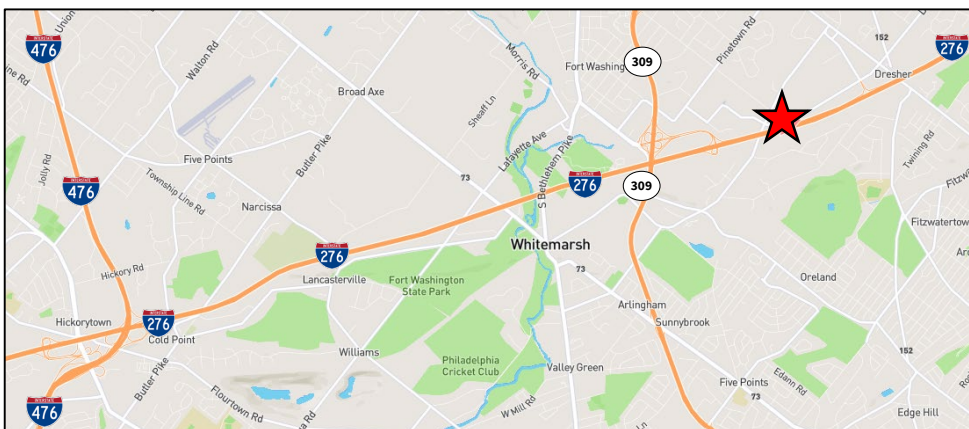
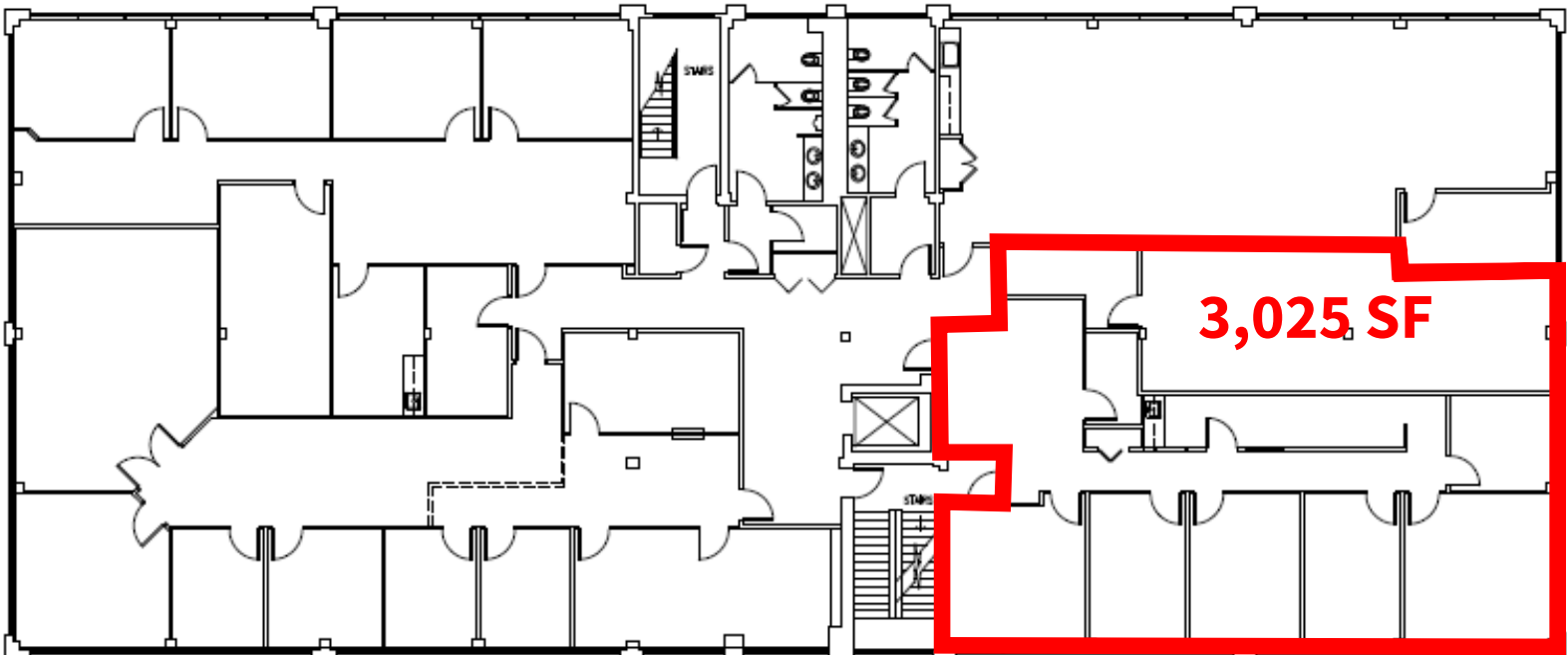


1035 Virginia Drive | Fort Washington, PA

First Floor



Second Floor



Doug Newbert
Executive Vice President
+1 610 249 2273
doug.newbert@am.jll.com

JLL | Jones Lang LaSalle
1235 Westlakes Drive
Suite 210
Berwyn, PA 19312
+1 610 249 2255

