

116 BEDFORD AVE

BETWEEN N 10TH & 11TH STREETS

WILLIAMSBURG, BROOKLYN

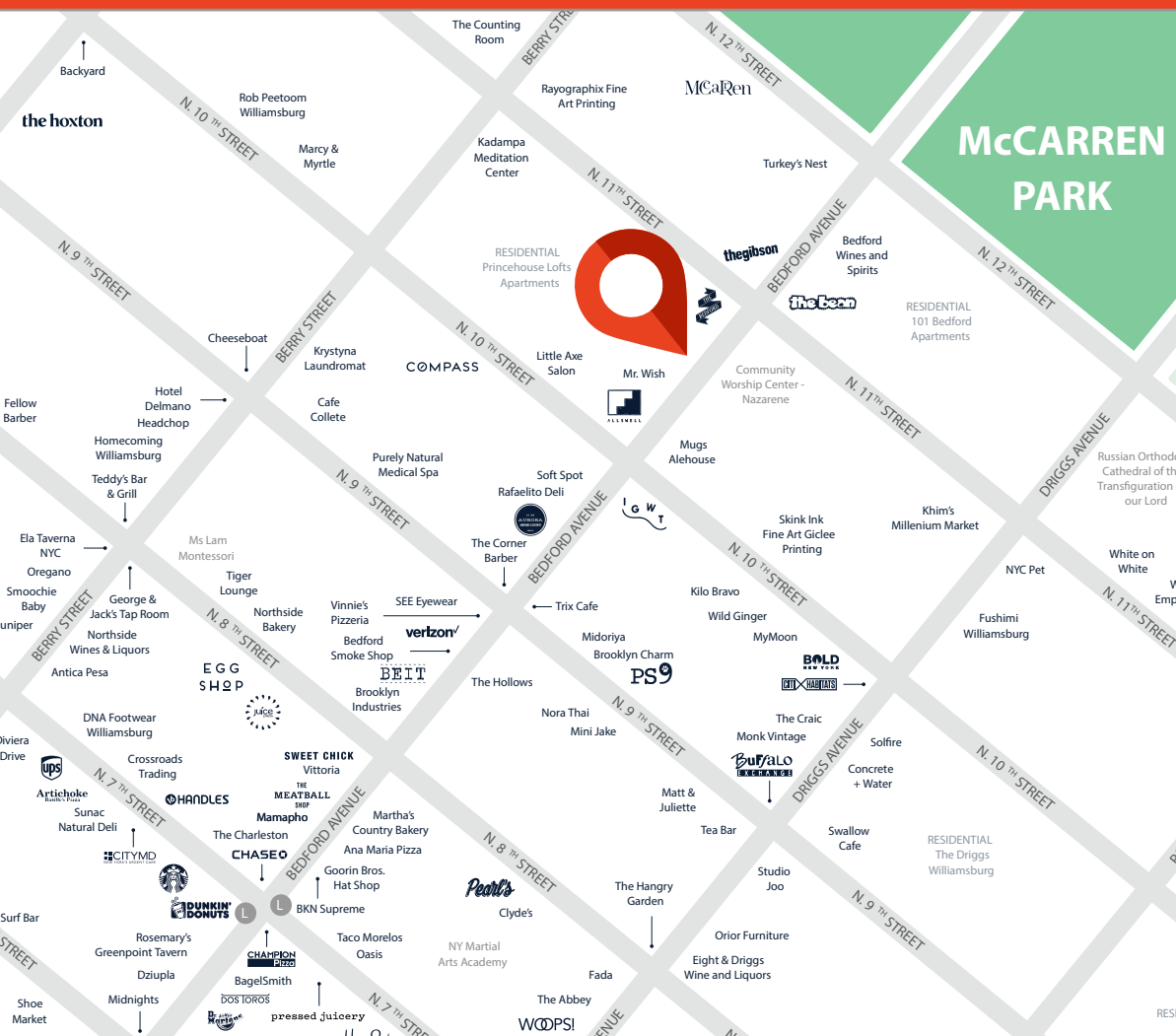


116 BEDFORD AVE

Newly renovated
space on
Bedford Avenue

Great for
Medical, Fitness,
etc.

All Uses
Considered



SIZE

Ground Floor
Cellar

2,300 SF
1,500 SF

FRONTAGE

18'

CEILING HEIGHT

12'

POSSESSION

Immediate

TRANSPORTATION

L

CO-TENANTS

WARBY PARKER

BUCK MASON



CONTACT OUR BROKERS FOR MORE INFORMATION:

MARC SITT

MSitt@ksrny.com

917.757.8863

ZALMAN KAMISH

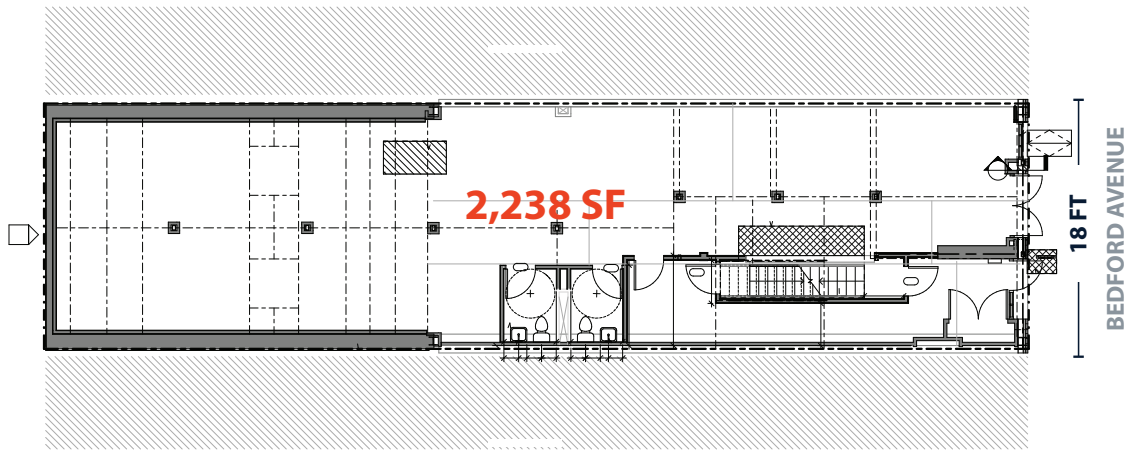
SKamish@ksrny.com

310.592.7398

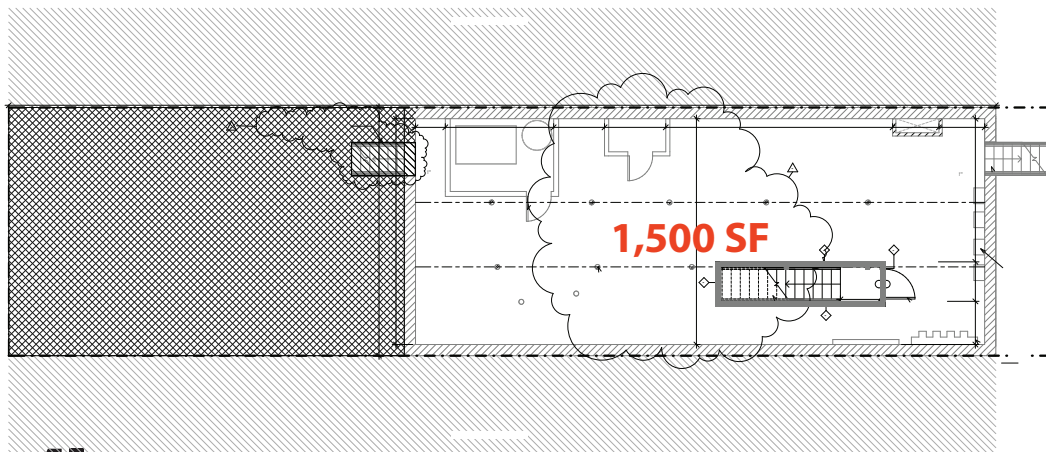
All information supplied in this marketing presentation and/or flyer is from sources deemed reliable and is furnished subject to errors, omissions, modifications, removal of listings from sale/lease and to any listing condition. Any square footage, dimensions, floor plans and/or technical data set forth are approximations and are subject to further elaboration/confirmation.

116 BEDFORD_{AVE}

GROUND FLOOR



CELLAR



CONTACT OUR BROKERS FOR MORE INFORMATION:

MARC SITT
MSitt@ksrny.com

917.757.8863

ZALMAN KAMISH
SKamish@ksrny.com

310.592.7398