



THE DEPOT AT TRESTLE



Walk Score
90

www.depotattrestle.com

±13,137 SF

555 & 661 EL CAMINO REAL



Mike Moran, SIOR
Executive Managing Director
+1 650 401 2121
mike.moran@cushwake.com

Ben Paul
Executive Managing Director
+1 650 401 2123
ben.paul@cushwake.com

Pat Yaeger
Senior Director
+1 650 401 2133
pat.yaeger@cushwake.com



UNDER CONSTRUCTION

A CLASS A TRANSIT ORIENTED DEVELOPMENT

TWO BUILDINGS

+29,233 SF CLASS A OFFICE/RETAIL PROJECT

555 EL CAMINO REAL - ±7,682 SF

661 EL CAMINO REAL - ±5,455 SF



READY FOR TI'S

- Ideally located at the San Carlos CalTrain depot and just steps from downtown San Carlos Amenities
- Multiple outdoor areas and terraces at each building
- 15 minute drive to San Francisco International Airport and 30 minute drive to San Jose International Airport
- Opportunity for Building Signage

www.depotattrestle.com



Mike Moran, SIOR
Executive Managing Director
+1 650 401 2121
mike.moran@cushwake.com

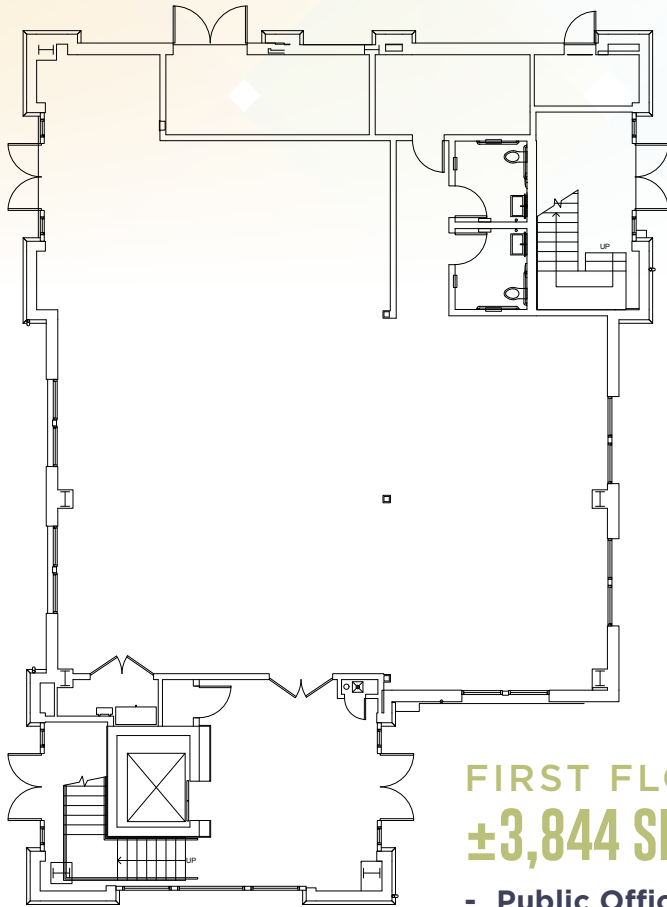
Ben Paul
Executive Managing Director
+1 650 401 2123
ben.paul@cushwake.com

Pat Yaeger
Senior Director
+1 650 401 2133
pat.yaeger@cushwake.com



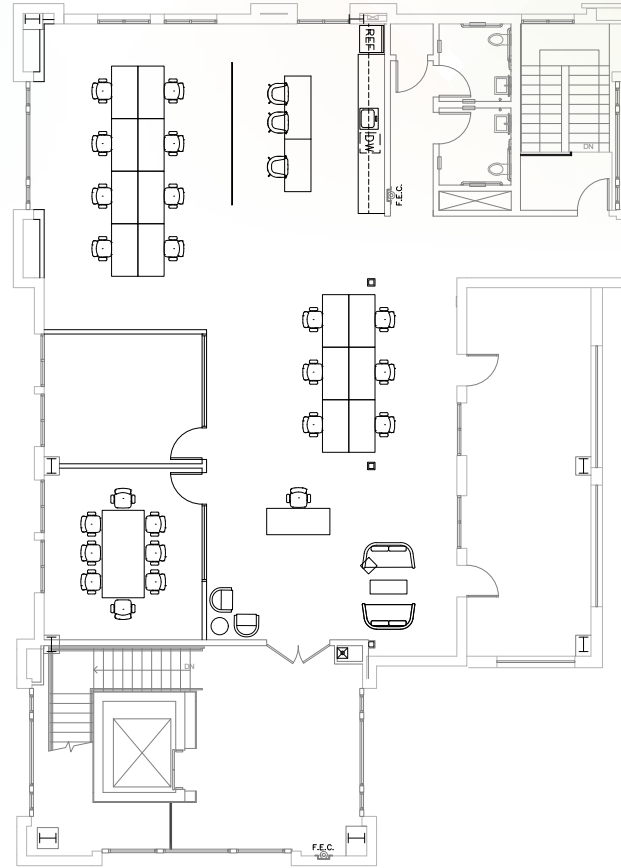
FLOOR PLAN

555 EL CAMINO REAL
±7,682 SF



FIRST FLOOR
±3,844 SF

- Public Office or Retail Use



SECOND FLOOR
±3,838 SF

- Office Use
- Spec Build Out Underway
- January 2020 Occupancy!
- Hypothetical Furniture Plan

www.depotattrestle.com



Mike Moran, SIOR
Executive Managing Director
+1 650 401 2121
mike.moran@cushwake.com

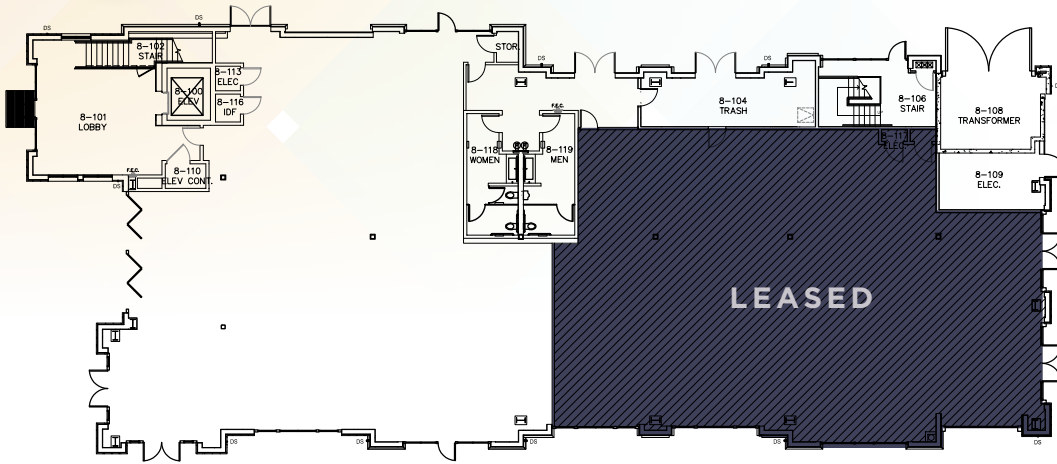
Ben Paul
Executive Managing Director
+1 650 401 2123
ben.paul@cushwake.com

Pat Yaeger
Senior Director
+1 650 401 2133
pat.yaeger@cushwake.com



FLOOR PLAN

661 EL CAMINO REAL
±5,455 SF



FIRST FLOOR
±5,455 SF

- Public Office or Retail Use



SECOND FLOOR

www.depotattrestle.com



Mike Moran, SIOR
Executive Managing Director
+1 650 401 2121
mike.moran@cushwake.com

Ben Paul
Executive Managing Director
+1 650 401 2123
ben.paul@cushwake.com

Pat Yaeger
Senior Director
+1 650 401 2133
pat.yaeger@cushwake.com



SITE PLAN



www.depotattrestle.com



Mike Moran, SIOR
Executive Managing Director
+1 650 401 2121
mike.moran@cushwake.com

Ben Paul
Executive Managing Director
+1 650 401 2123
ben.paul@cushwake.com

Pat Yaeger
Senior Director
+1 650 401 2133
pat.yaeger@cushwake.com





LEGEND

- Caltrain Route
- Caltrain Station
- Baby Bullet Station
- San Carlos Caltrain Station
The Depot at Trestle

SCHEDULE

NORTHBOUND WEEKDAYS

5:15, 5:49, 7:04, 7:29, 8:05, 8:29, 9:02, 9:28, 10:01, 10:37, 10:59, 11:59, 12:59, 1:59, 2:10, 2:59, 3:09, 4:01, 4:29, 4:44, 5:05, 5:33, 5:40, 6:05, 6:33, 6:40, 7:12, 7:24, 7:53, 8:31, 9:31, 10:31, 11:17

SOUTHBOUND WEEKDAYS

5:38, 6:10, 6:39, 7:02, 7:18, 7:40, 8:02, 8:18, 8:40, 9:02, 9:18, 9:46, 10:21, 10:46, 11:46, 12:46, 1:46, 2:46, 3:18, 3:46, 4:11, 4:56, 5:22, 6:00, 6:22, 6:56, 7:22, 8:18, 9:18, 10:18, 11:28, 12:50

- AM TRAINS
- PM TRAINS

Visit www.caltrain.com for more information.

www.depotattrestle.com



Mike Moran, SIOR
Executive Managing Director
+1 650 401 2121
mike.moran@cushwake.com

Ben Paul
Executive Managing Director
+1 650 401 2123
ben.paul@cushwake.com

Pat Yaeger
Senior Director
+1 650 401 2133
pat.yaeger@cushwake.com



AMENITIES

TRADER JOE'S
Office DEPOT



RESTAURANTS

- 1 Blue Line Pizza
- 2 Starbucks
House of Bagels
Saffron Indian Bistro
Red Hot Chili Pepper
Delizie
Cuisinett
Rail Sports Bar
Nino's Ristorante
Trattoria de Vittorio
- 3 Gherkin's Sandwich
SusieCakes
San Carlos Bar & Grill
- 4 Patxi's Pizza San Carlos
Peet's Coffee
- 5 Piacere
Seiya
Rita's Italian Ice
Subway
Santorini
Spasso
ASYA
Pranzi
Mountain Mike's Pizza
- 6 Town
- 7 Starbucks
Nothing Bundt Cakes
LuLu's on Laurel Street
Ozuma Japanese
Broiler Express
- 8 Rustic House Oyster Bar
- 9 The Refuge
Ale Arsenal

SERVICES

- 1 The Home Depot
- 2 Lucky
- 3 Office Depot
- 4 REI
- 5 TJ Maxx
Bassett
- 6 PetSmart
Best Buy
- 7 Trader Joe's

FITNESS

- 1 Mecca Fitness
- 2 barre3 San Carlos
- 3 M fitness and health
- 4 Core Total Fitness
- 5 IMPACT! Kickboxing
- 6 King's Camps & Fitness

BANKS

- 1 Wells Fargo
Comerica Bank
- 2 Bank of America
U.S. Bank
- 3 Union Bank
- 4 Citibank
- 5 Chase



www.depotattrestle.com



Mike Moran, SIOR
Executive Managing Director
+1 650 401 2121
mike.moran@cushwake.com

Ben Paul
Executive Managing Director
+1 650 401 2123
ben.paul@cushwake.com

Pat Yaeger
Senior Director
+1 650 401 2133
pat.yaeger@cushwake.com

