

# ROBBEN INDUSTRIAL PARK

LOTS 5 & 12, 15321 CONSER ST & 15423 S CORNICE ST, OLATHE, KS 66062



**PRICE REDUCTION!**



## HIGHLIGHTS

- Lot 5 (5 Ac) & Lot 12 (2.59 Ac)
- Priced at \$2.95/SF
- Zoned M-2 (General Industrial District)
- Great Access to I-35 & Hwy 169
- Lots Available Individually or as a Package
- All Utilities to Site

## FOR SALE

LOT 5	\$643,038
LOT 12	\$332,646

## DEMOGRAPHICS

	3 Mile	5 Mile	10 Mile
2017 ESTIMATED POPULATION	4,211	61,958	133,440
2017 MED HOUSEHOLD INCOME	\$88,280	\$89,912	\$96,785

### Terry Moody

Office: (913) 945-3727

Mobile: (913) 558-2083

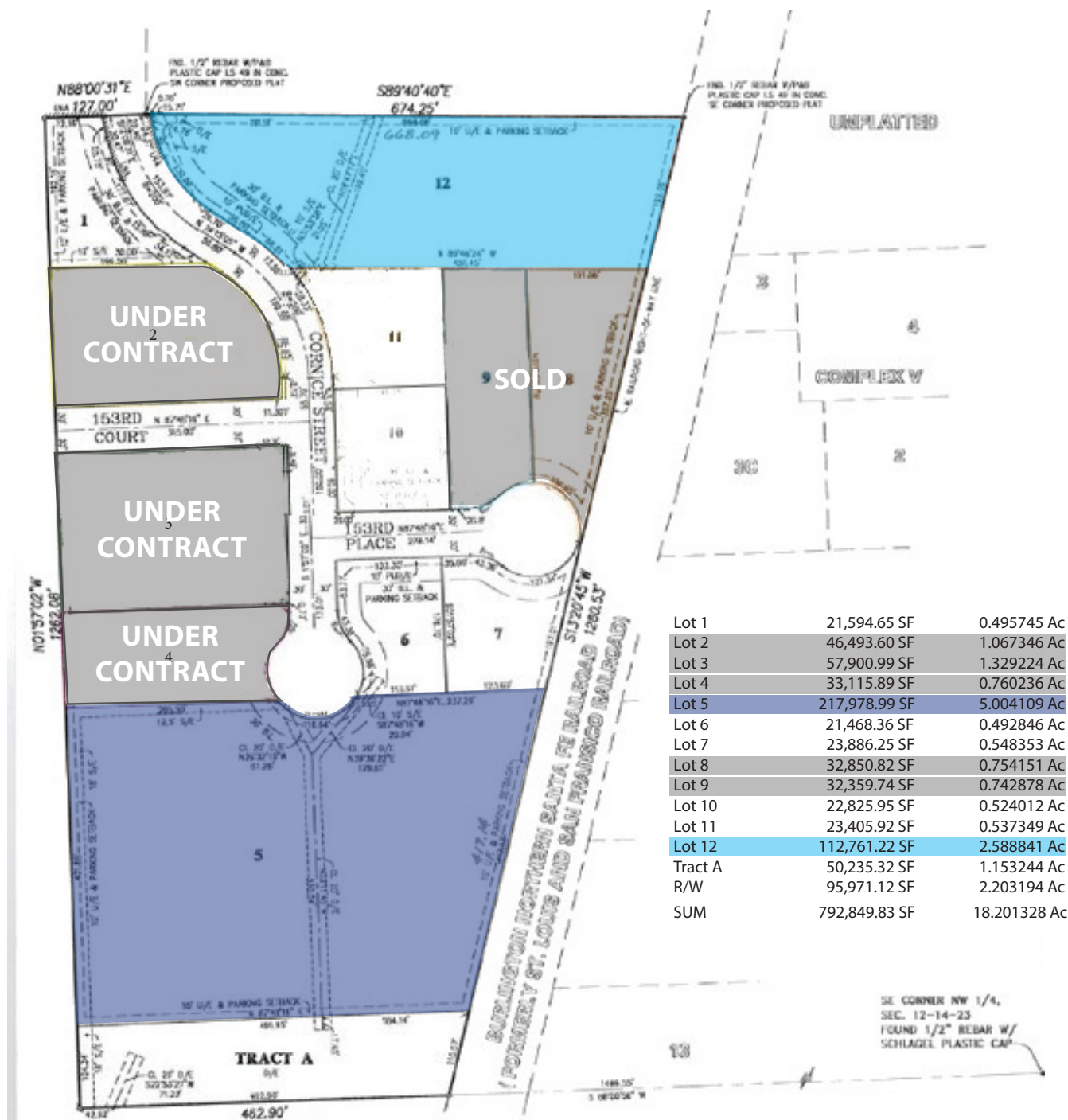
Email: [moody@reececommercial.com](mailto:moody@reececommercial.com)

The information above has been obtained from sources believed reliable. While we do not doubt its accuracy we have not verified it and make no guarantee, warranty or representation about it. It is your responsibility to independently confirm its accuracy and completeness. Any projections, opinions, assumptions, or estimates used are for example only and do not represent the current or future performance of the property. You and your advisors should conduct a careful, independent investigation of the property to determine to your satisfaction the suitability of the property for your needs.

© 2018

# ROBBEN INDUSTRIAL PARK

LOTS 5 & 12, 15321 CONSER ST & 15423 S CORNICE ST, OLATHE, KS 66062



## Terry Moody

Office: (913) 945-3727

Mobile: (913) 558-2083

Email: [moody@reececommercial.com](mailto:moody@reececommercial.com)

The information above has been obtained from sources believed reliable. While we do not doubt its accuracy we have not verified it and make no guarantee, warranty or representation about it. It is your responsibility to independently confirm its accuracy and completeness. Any projections, opinions, assumptions, or estimates used are for example only and do not represent the current or future performance of the property. You and your advisors should conduct a careful, independent investigation of the property to determine to your satisfaction the suitability of the property for your needs.

© 2018