

# FOR LEASE

Baltimore County, MD

# JOPPA GREEN I

2324 W. JOPPA ROAD | LUTHERVILLE, MARYLAND 21093

## AVAILABLE

Suite 410: 1,060 sf

## RENTAL RATE

\$2,000/month

## PARKING RATIO

4 : 1,000 sf

## NEARBY AMENITIES

Dining, retail, banking, personal services

## HIGHLIGHTS

- ▶ Ideally situated at I-695 and Falls Road with numerous amenities in close proximity
- ▶ Individual controlled HVAC
- ▶ Operable windows



**Bill Whitty**

☎ 410.494.4862

✉ [bwhitty@mackenziecommercial.com](mailto:bwhitty@mackenziecommercial.com)

**Henson Ford**

☎ 410.494.6657

✉ [hford@mackenziecommercial.com](mailto:hford@mackenziecommercial.com)

**Matt Mueller**

☎ 410.494.6658

✉ [mmueller@mackenziecommercial.com](mailto:mmueller@mackenziecommercial.com)

**Joe Bradley**

☎ 410.494.4892

✉ [jbradley@](mailto:jbradley@)

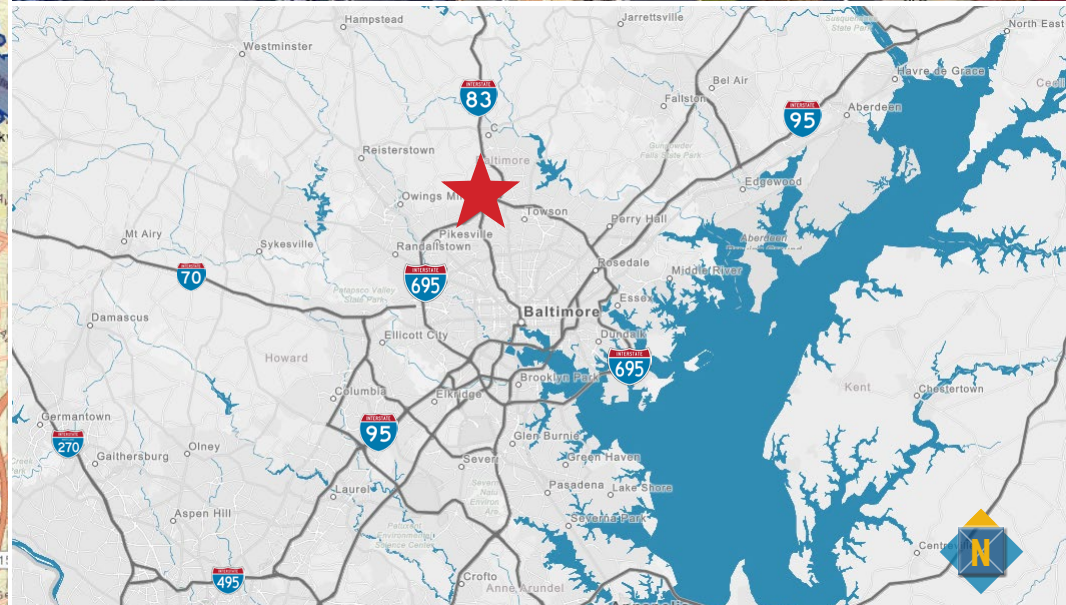
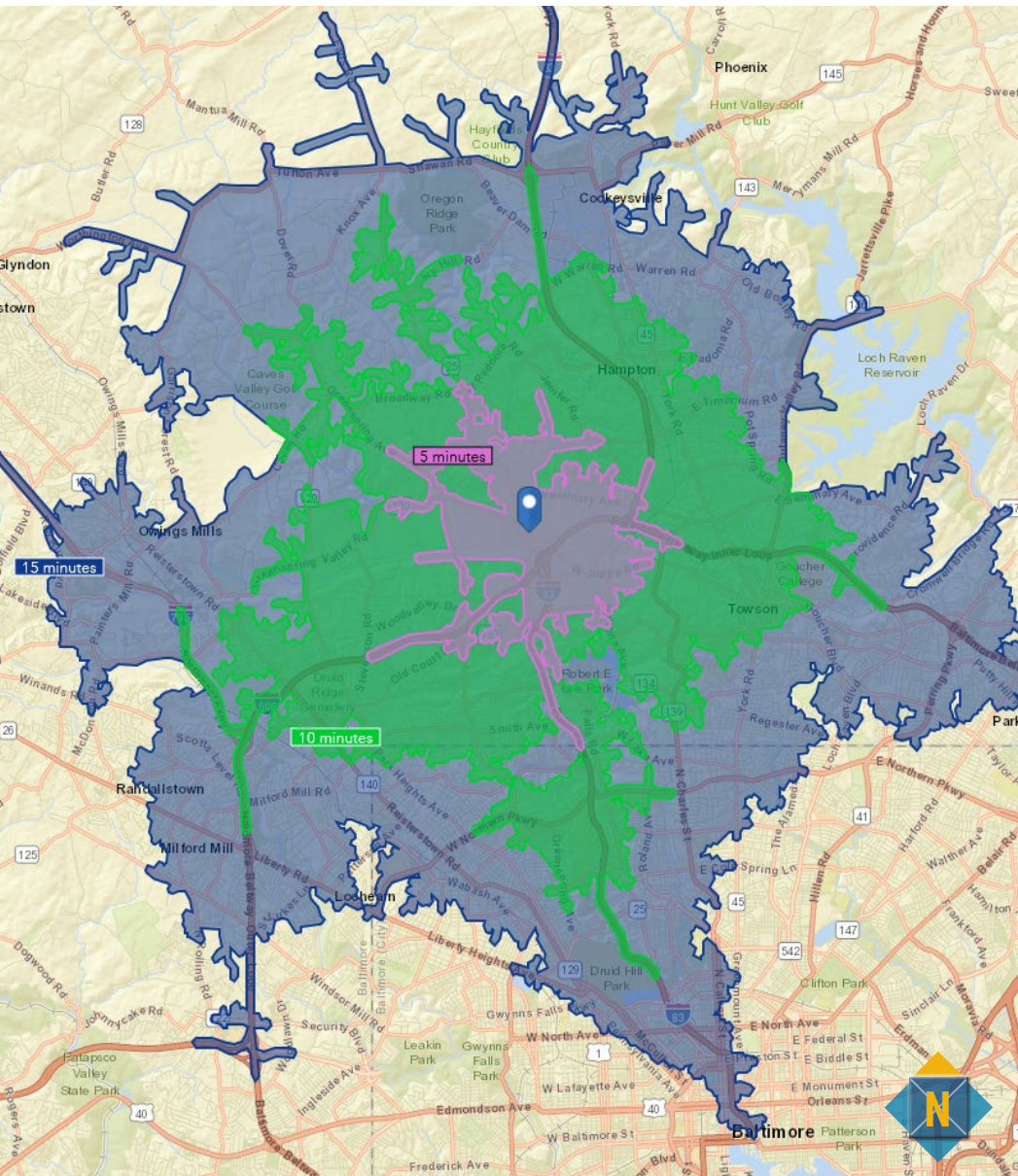
MacKenzie Commercial Real Estate Services, LLC • 410-821-8585 • 2328 W. Joppa Road, Suite 200 | Lutherville-Timonium, Maryland 21093 • [www.MACKENZIECOMMERCIAL.com](http://www.MACKENZIECOMMERCIAL.com)

# FOR LEASE

Baltimore County, MD

# LOCATION/DRIVE TIME/BIRDSEYE

JOPPA GREEN I | 2324 W. JOPPA ROAD | LUTHERVILLE, MARYLAND 21093



**Bill Whitty**  
 ☎ 410.494.4862  
 ✉ [bwhitty@mackenziecommercial.com](mailto:bwhitty@mackenziecommercial.com)

**Henson Ford**  
 ☎ 410.494.6657  
 ✉ [hford@mackenziecommercial.com](mailto:hford@mackenziecommercial.com)

**Matt Mueller**  
 ☎ 410.494.6658  
 ✉ [mmueller@mackenziecommercial.com](mailto:mmueller@mackenziecommercial.com)

**Joe Bradley**  
 ☎ 410.494.4892  
 ✉ [jbradley@](mailto:jbradley@)

MacKenzie Commercial Real Estate Services, LLC • 410-821-8585 • 2328 W. Joppa Road, Suite 200 | Lutherville-Timonium, Maryland 21093 • [www.MACKENZIECOMMERCIAL.com](http://www.MACKENZIECOMMERCIAL.com)