

Fully Renovated Boutique SOMA Brick and Timber Space – ±2,500 to 4,000 RSF

433 Natoma Street
San Francisco, CA

Full renovation complete

High ceilings, excellent light with unique creative identity

Complete lobby and entryway renovation underway

Full HVAC and operable windows

Prime, central located amenity rich SOMA location

Term: 3-7 Years

Rate: Inquire with Broker



Contact

Evan Housel

415.948.3729

ehousel@kiddermathews.com

LIC #01882475

Mario Previtali

415.755.8905

mariop@kiddermathews.com

LIC #01902075

433 Natoma Street



Contact

Evan Housel
415.948.3729
ehousel@kiddermathews.com
LIC #01882475

Mario Previtali
415.755.8905
mariop@kiddermathews.com
LIC #01902075

433 Natoma Street



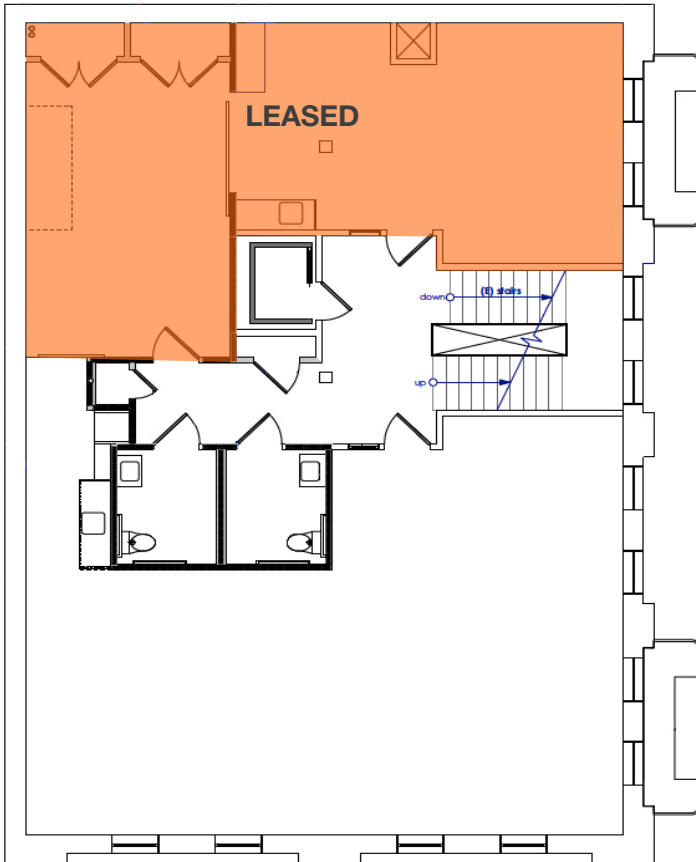
Contact

Evan Housel
415.948.3729
ehousel@kiddermathews.com
LIC #01882475

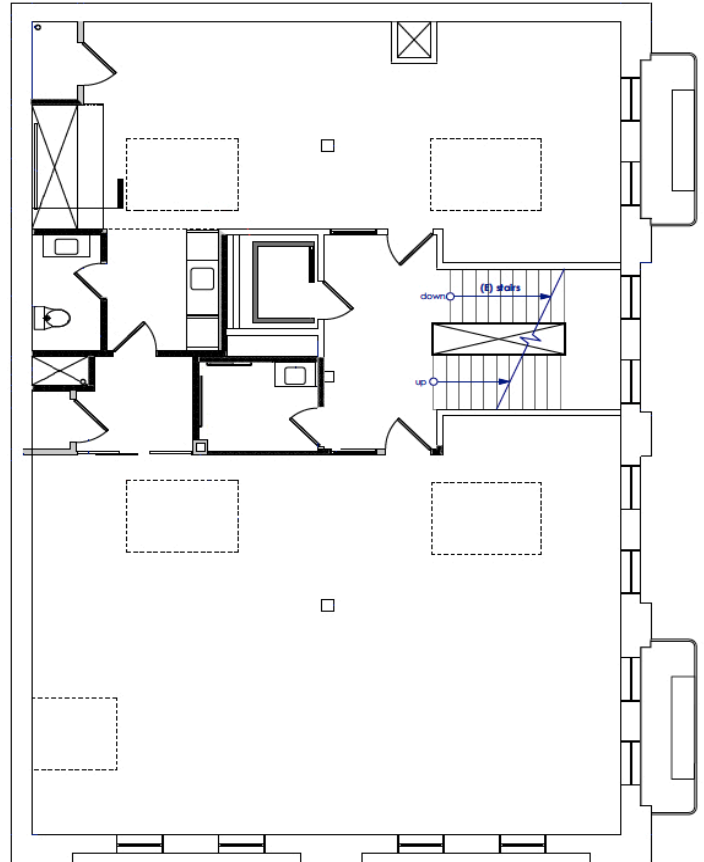
Mario Previtali
415.755.8905
mariop@kiddermathews.com
LIC #01902075

433 Natoma Street

SECOND FLOOR | ±1,500 RSF



THIRD FLOOR | ±2,500 RSF



Contact

Evan Housel
415.948.3729
ehousel@kiddermathews.com
LIC #01882475

Mario Previtali
415.755.8905
mariop@kiddermathews.com
LIC #01902075