

# PIONEER DRIVE COMMERCE TWP., MICHIGAN

VACANT LAND FOR SALE  
1.15 Acres Available

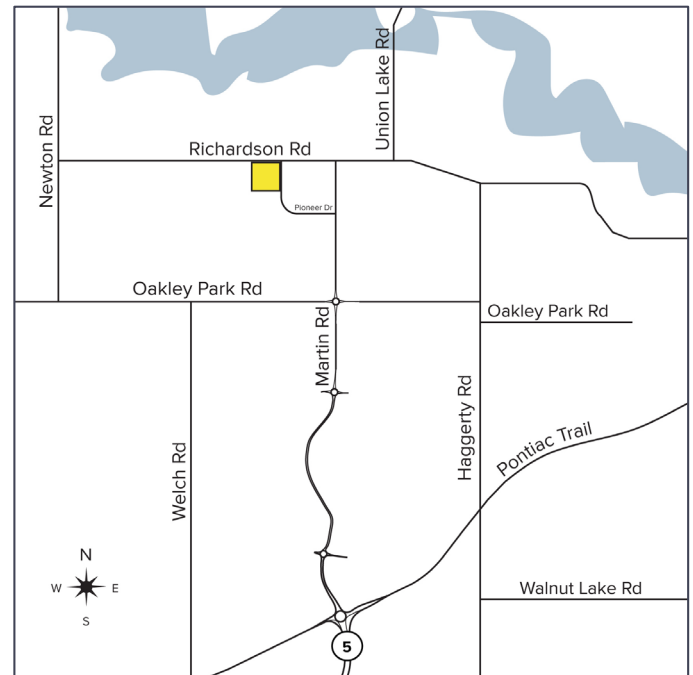


**SIGNATURE  
ASSOCIATES**  
KNOW SIGNATURE | KNOW RESULTS



## PROPERTY FEATURES

- 1.15 acres available
- Zoned Industrial
- Site is flat, cleared and ready for construction
- Site plan approved for up to 15,000 sq. ft.
- 250' frontage on Richardson and 200' on Pioneer Drive
- Sale price: \$2,450,000 (\$81,447.96/acre)



For more information, please contact:

**JEFF LEMANSKI**

(248) 359 0641

[jlemanski@signatureassociates.com](mailto:jlemanski@signatureassociates.com)

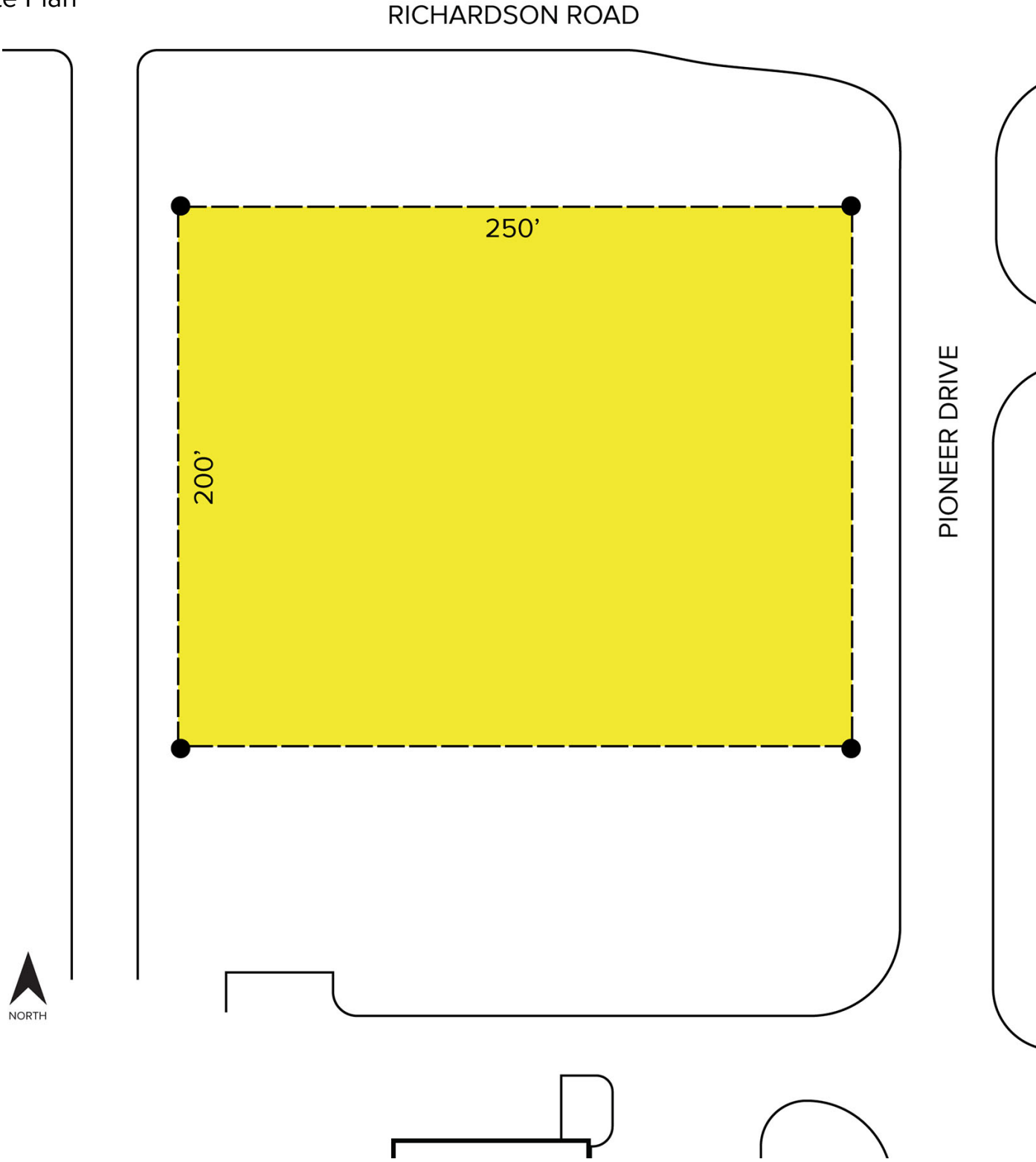
**SIGNATURE ASSOCIATES**  
One Towne Square, Suite 1200  
Southfield, MI 48076  
[www.signatureassociates.com](http://www.signatureassociates.com)

# Pioneer Drive – Commerce Twp., Michigan

Land For Sale

1.15  
Acres  
AVAILABLE

## Site Plan



For more information, please contact:  
**JEFF LEMANSKI**  
(248) 359 0641  
jlemanski@signatureassociates.com

**SIGNATURE ASSOCIATES**  
One Towne Square, Suite 1200  
Southfield, MI 48076  
www.signatureassociates.com

Information is subject to verification and no liability for errors or omissions is assumed. Price is subject to change and listing withdrawal.