

**FOR LEASE - 8,750 SF**  
4253 KELLWAY CIRCLE  
ADDISON, TX 75001



## LOCATION

COUNTY	DALLAS
MARKET	Northwest Dallas Industrial
SUBMARKET	Metropolitan/Addison Industrial

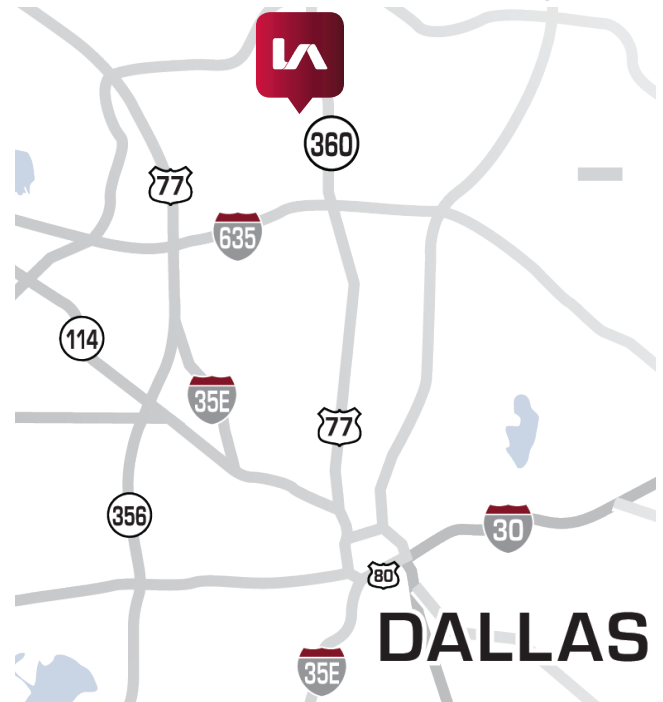
## BUILDING HIGHLIGHTS

TOTAL BUILDING SF	29,970 SF
CLEAR HEIGHT	17'
BUILT	1981

## LISTING HIGHLIGHTS

AVAILABLE SF	8,750 SF
LOADING	1 Dock High 1 Grade Level
COMMENTS	Easy access to I-35 E, I-635, and Dallas North Tollway Available in 30 Days Front Park Rear Load Configuration

[Click to open in Google maps](#)



## ECONOMICS

RATE

CONTACT BROKER

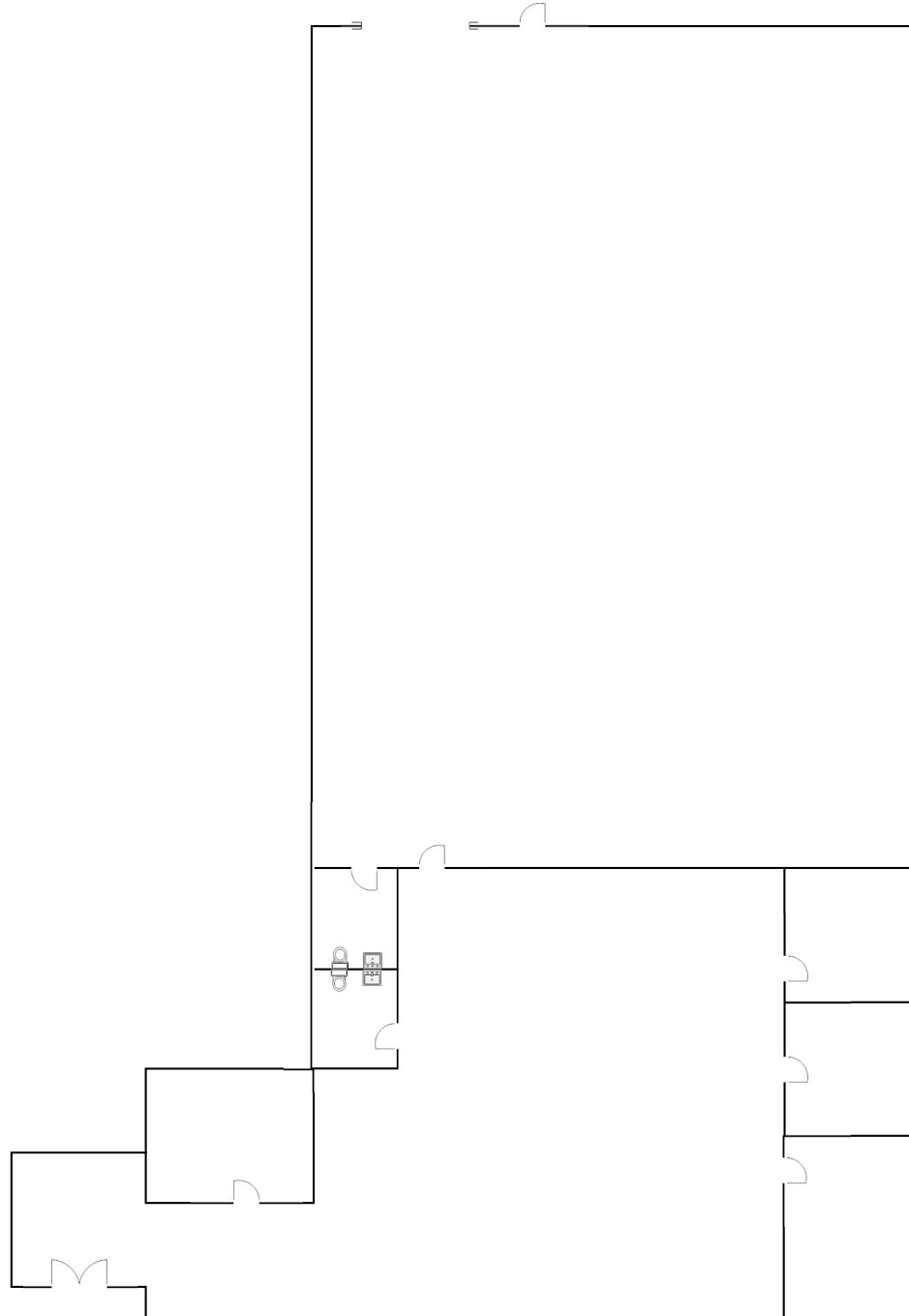
Adam Graham, SIOR, CCIM  
Principal  
[agraham@lee-associates.com](mailto:agraham@lee-associates.com)  
D: (972) 934-4011

Corbin Blount  
Director  
[cblount@lee-associates.com](mailto:cblount@lee-associates.com)  
D: (972) 934-4035

15445 Dallas Parkway, Suite 400 | Addison, TX 75001



**FOR LEASE - 8,750 SF**  
4253 KELLWAY CIRCLE  
ADDISON, TX 75001



Adam Graham, SIOR, CCIM  
Principal  
[agraham@lee-associates.com](mailto:agraham@lee-associates.com)  
D: (972) 934-4011

Corbin Blount  
Director  
[cblount@lee-associates.com](mailto:cblount@lee-associates.com)  
D: (972) 934-4035

All information furnished regarding property for sale, rental or financing is from sources deemed reliable, but no warranty or representation is made to the accuracy thereof and same is submitted to errors, omissions, change of price, rental or other conditions prior to sale, lease or financing or withdrawal without notice. No liability of any kind is to be imposed on the broker herein.

15445 Dallas Parkway, Suite 400 | Addison, TX 75001

