

±5,000 SF Industrial Building/ Storage

561 Division Street
Campbell, CA

Street frontage with easy access

Zoning C-M

Clear height 14'-18'

Built in 1964 and 1979

Fire sprinklers

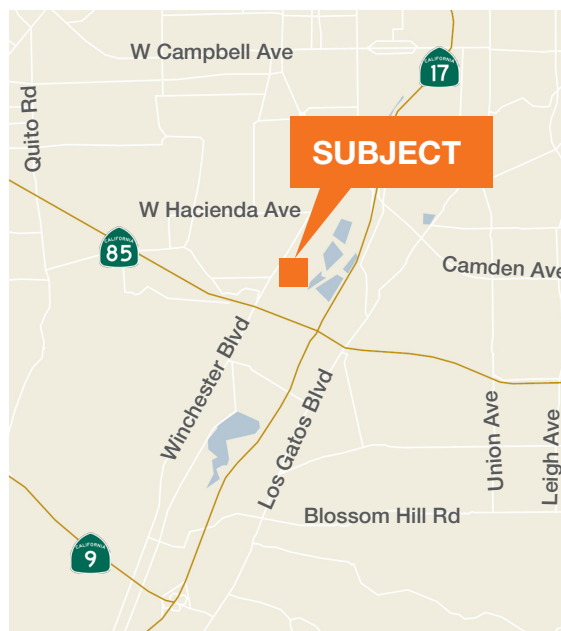
Parking ratio 3.9 per 1k

Asking \$2.00 PSF, Gross

Call to tour only



Location



Contact

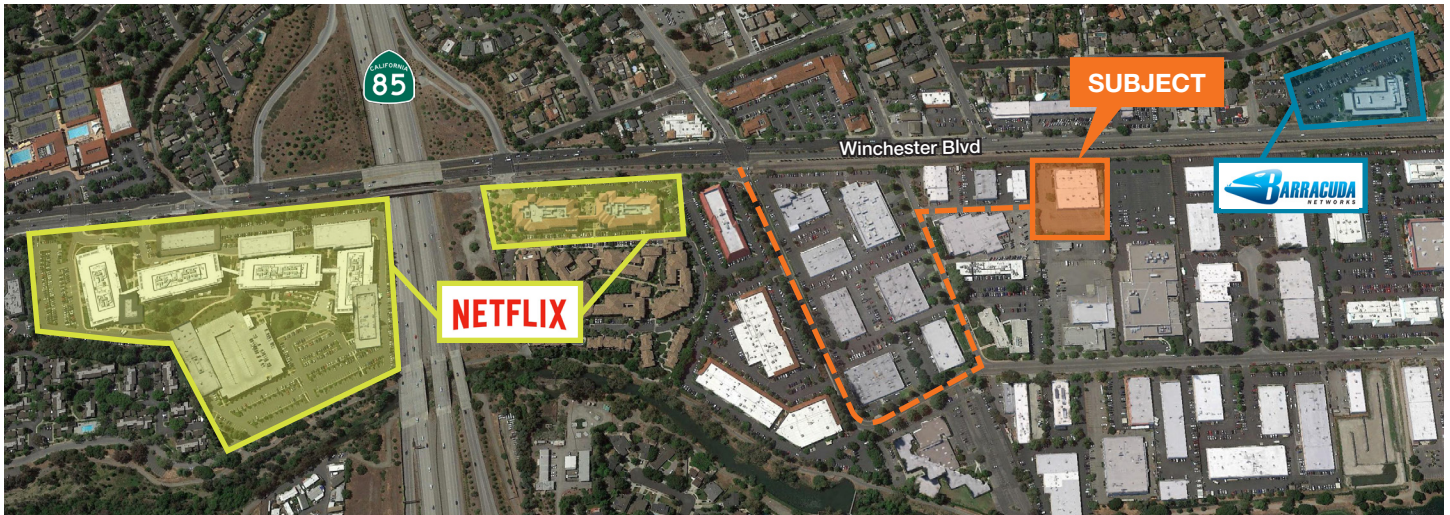
Bruce Mateso

408.588.2302

bmateso@kiddermathews.com

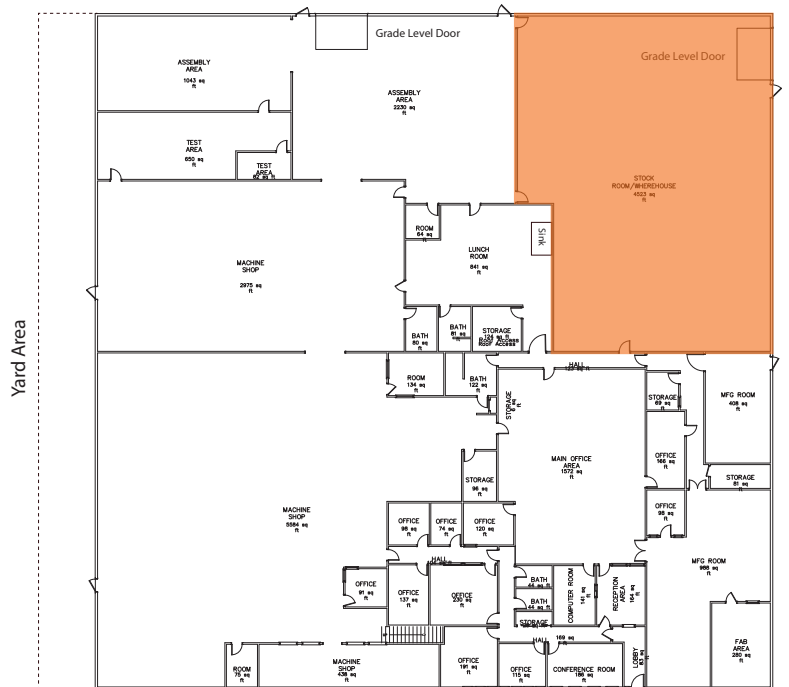
LIC #01712838

±5,000 SF Industrial Building/Storage in Campbell



2018 DEMOGRAPHICS			
	1 mile	3 mile	5 mile
Population	17,940	175,779	463,310
Avg Household Income	\$142,350	\$149,722	\$150,297

2018 TRAVEL TIME TO JOB			
	1 mile	3 mile	5 mile
<30 minutes	60.39%	62.15%	61.91%
30-60 minutes	32.88%	31.09%	31.27%
60+ minutes	6.73%	6.76%	6.82%



Contact

Bruce Matesso
 408.588.2302
 bmatesso@kiddermathews.com
 LIC #01712838