

FOR LEASE

EISENHOWER CORPORATE CAMPUS

290 W MOUNT PLEASANT AVENUE
LIVINGSTON, NEW JERSEY



OVERVIEW

Eisenhower Corporate Campus is a 380,065 RSF Class A office property with a focus on efficiency. The property is in part powered by its on-site solar panel field and is LEED Silver and Energy Star certified.

Eisenhower Corporate Campus' on-site conferencing facilities are unmatched: a state-of-the-art auditorium for 225, conference rooms for 10-60 people, breakout rooms and on-site catering.

Additional amenities include a full-service cafeteria, fitness center with personal training, covered parking, and electric car charging stations. Starbucks, Shake Shack and Blaza Pizza are immediately adjacent to the property and within walking distance.

- + Available space
 - 15,404 RSF
 - 8,096 RSF
 - 1,098 RSF
- + \$26.50 per SF asking rent
- + Available immediately
- + On-site amenities:
 - Conference facilities
 - Full-service cafeteria
 - Electric car charging stations
 - Fitness center
 - Covered parking



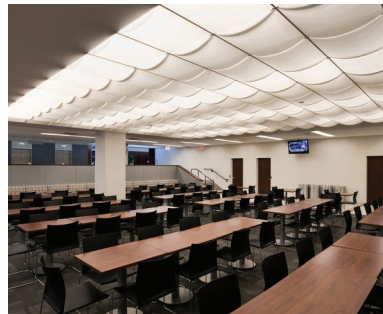
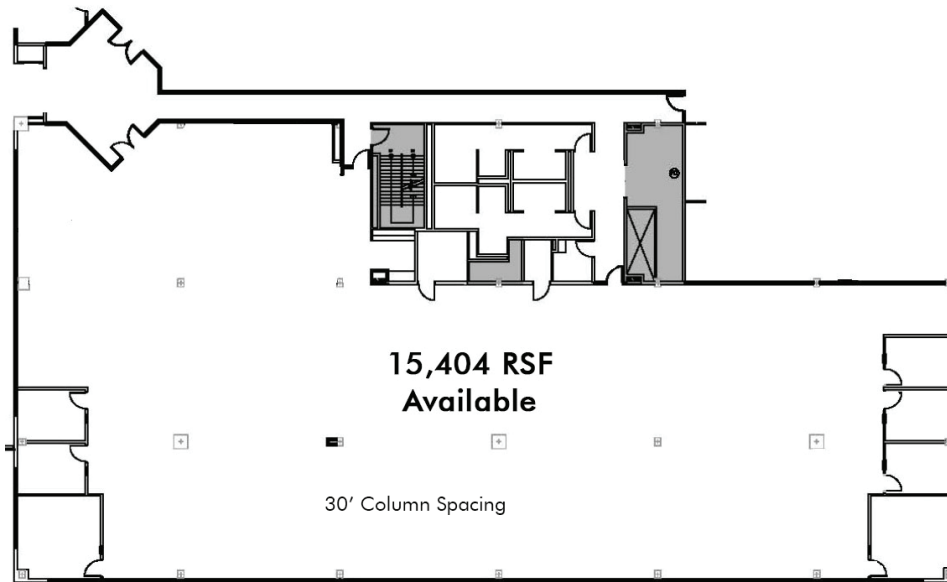
www.cbre.us

CBRE

FOR LEASE

EISENHOWER CORPORATE CAMPUS

290
W MOUNT PLEASANT AVENUE
Livingston, NJ



FOR LEASE

EISENHOWER CORPORATE CAMPUS

290
W MOUNT PLEASANT AVENUE
Livingston, NJ



CONTACT US

JONATHAN MEISEL

Senior Vice President
+1 732 509 2843
jonathan.meisel@cbre.com

ERIN WENZLER

Senior Associate
+1 201 712 5893
erin.wenzler@cbre.com

© 2018 CBRE, Inc. All rights reserved. This information has been obtained from sources believed reliable, but has not been verified for accuracy or completeness. You should conduct a careful, independent investigation of the property and verify all information. Any reliance on this information is solely at your own risk. CBRE and the CBRE logo are service marks of CBRE, Inc. All other marks displayed on this document are the property of their respective owners. Photos herein are the property of their respective owners. Use of these images without the express written consent of the owner is prohibited.