



3,000± sf Available

Location

- Located on the southwest corner of the S. Division Avenue and Columbia Street intersection
- Easy access to I-4 and SR 408
- Minutes to the downtown core and Orlando Health Main Campus

Opportunity

- One-story, 3,000± sf office building
- Attractive interior finishes
- Signage opportunity

Parking

- 13 Surface Parking Spaces in gated private lot

Rate and Term

- Call for details

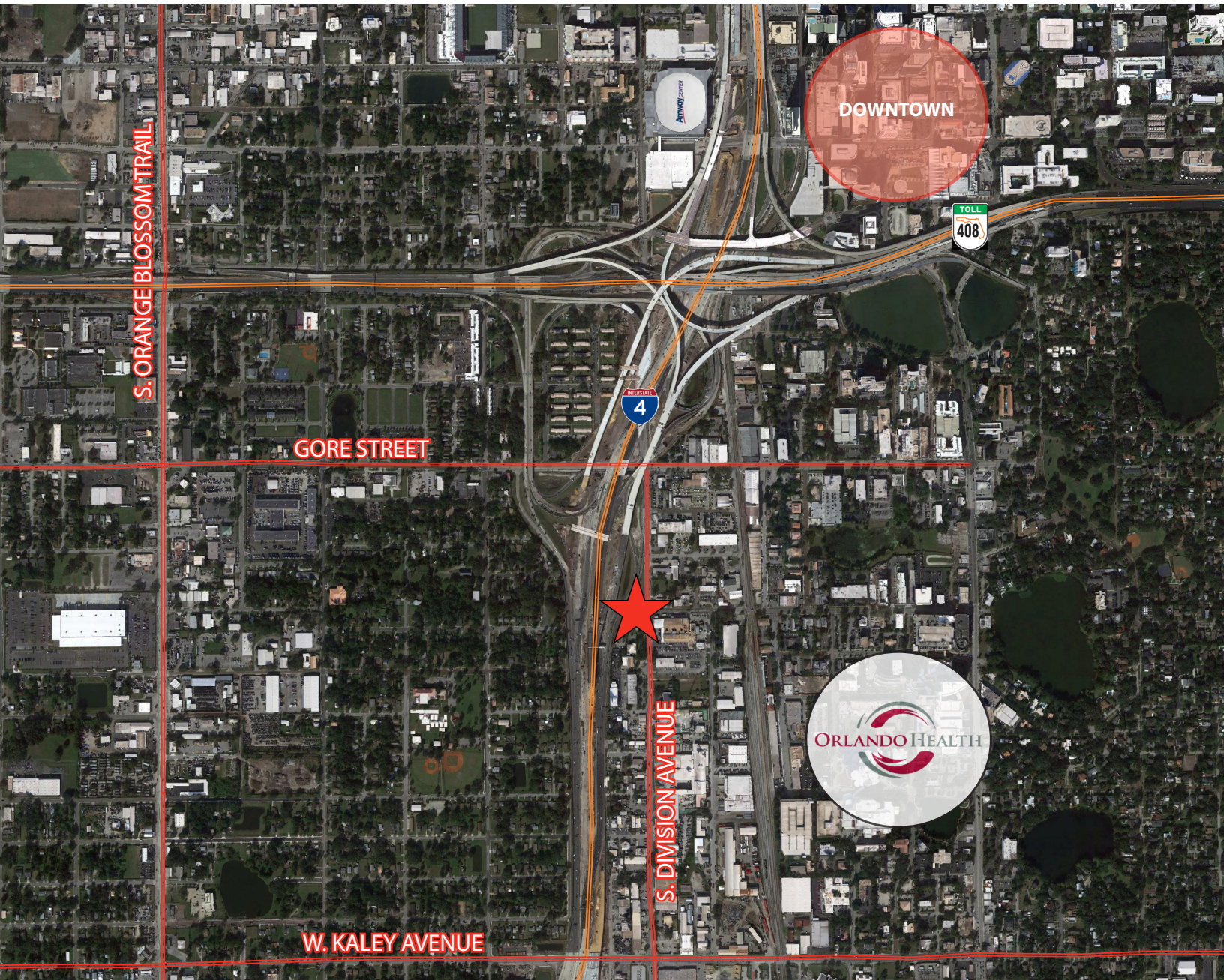
For more information, please contact:

Jordan Bohannon, Senior Associate
D 407 219 3502
C 407 267 6238
jordan.bohannon@avisonyoung.com

Alex Eastwood, Associate
D 407 440 6652
C 850 356 8231
alex.eastwood@avisonyoung.com

135 W Central Blvd
Suite 700
Orlando, FL 32801
407 219 3500

Area Map



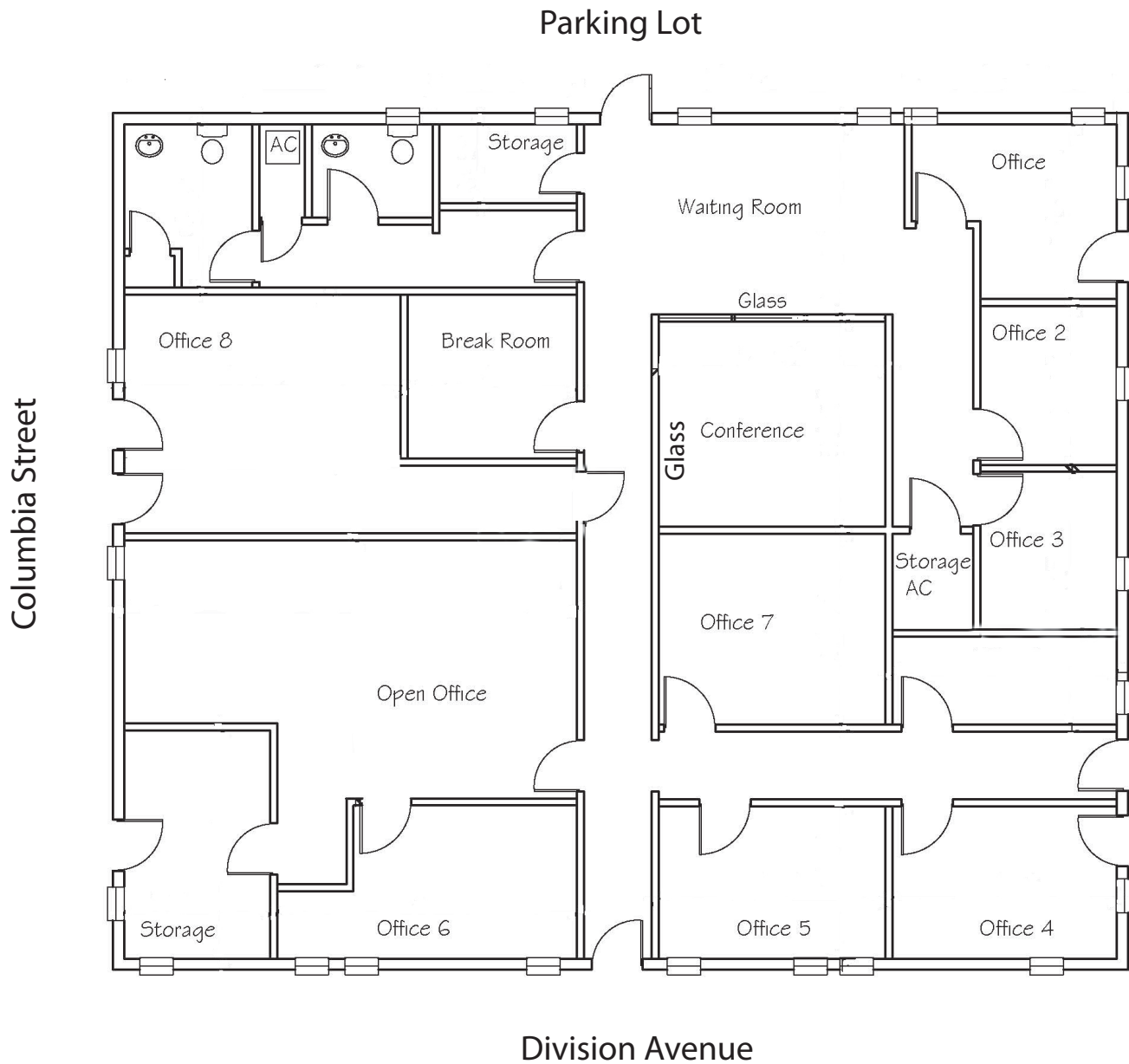
**AVISON
YOUNG**

avisonyoung.com

Jordan Bohannon, Senior Associate
D 407 219 3502
C 407 267 6238
jordan.bohannon@avisonyoung.com

Alex Eastwood, Associate
D 407 440 6652
C 850 356 8231
alex.eastwood@avisonyoung.com

Floor Plan



avisonyoung.com

Jordan Bohannon, Senior Associate
D 407 219 3502
C 407 267 6238
jordan.bohannon@avisonyoung.com

Alex Eastwood, Associate
D 407 440 6652
C 850 356 8231
alex.eastwood@avisonyoung.com