

1330 PIEDMONT AVENUE
TROY, MICHIGAN

INDUSTRIAL FOR SALE OR LEASE
14,240 Square Feet Available



**SIGNATURE
ASSOCIATES**
KNOW SIGNATURE | KNOW RESULTS

ALPHA ELECTRIC



PROPERTY FEATURES

- 14,240 square feet available
- 4,640 square feet of office
- 16' clear height
- (2) 12x14 grade level doors
- Zoned I-1
- 43 parking spaces
- 1,200 amps, 240 volts, 3-phase power
- Two story offices
- Fully fire suppressed
- Fenced yard with direct access to I-75 at Big Beaver
- Lease Rate: \$6.50/sq.ft. NNN
- Sale Price: \$1,195,000



For more information, please contact:

KRIS PAWLOWSKI
(248) 359 3801
kpawlowski@signatureassociates.com

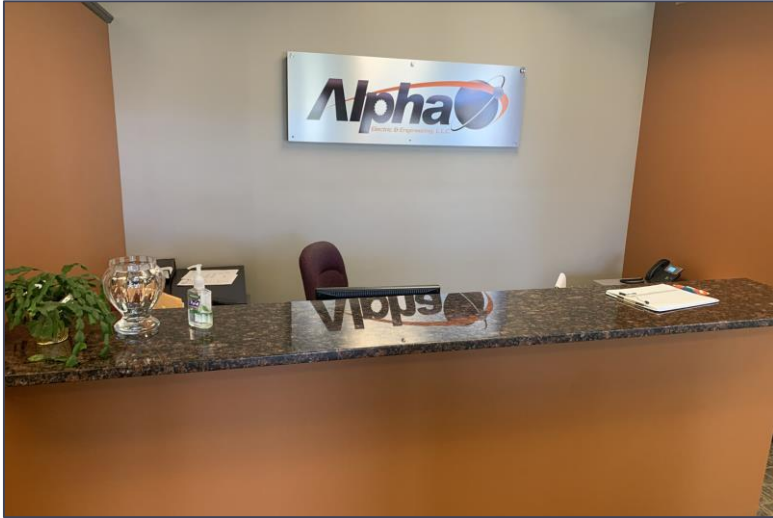
SIGNATURE ASSOCIATES
One Towne Square, Suite 1200
Southfield, MI 48076
www.signatureassociates.com

1330 Piedmont Avenue – Troy, Michigan

Industrial For Sale or Lease

14,240
Square Feet
AVAILABLE

Interior Photos



For more information, please contact:

KRIS PAWLOWSKI
(248) 359 3801
kpawlowski@signatureassociates.com

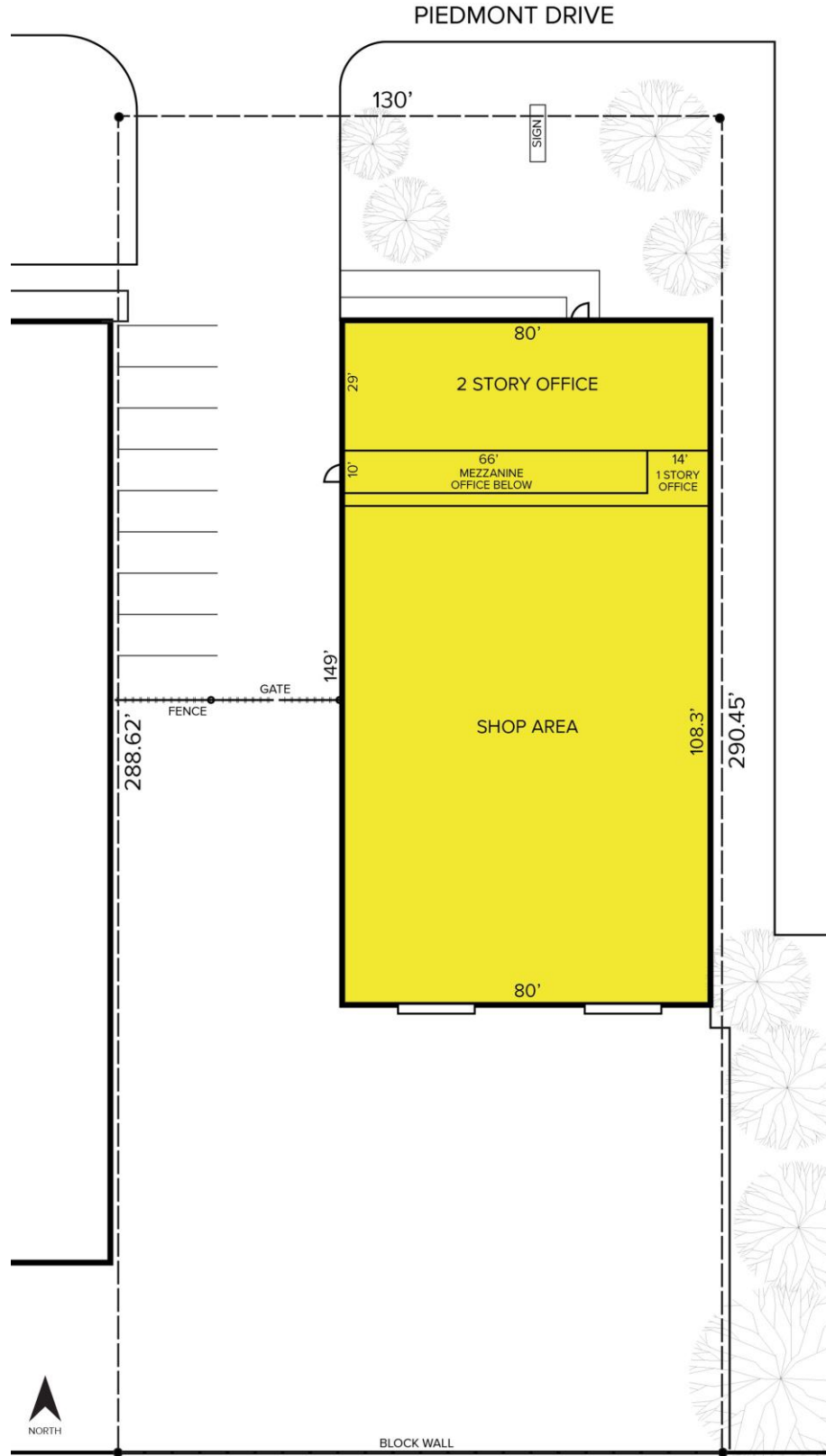
SIGNATURE ASSOCIATES
One Towne Square, Suite 1200
Southfield, MI 48076
www.signatureassociates.com

1330 Piedmont Avenue – Troy, Michigan

Industrial For Sale or Lease

14,240
Square Feet
AVAILABLE

Site Plan



For more information, please contact:

KRIS PAWLOWSKI
(248) 359 3801
kpawlowski@signatureassociates.com

SIGNATURE ASSOCIATES
One Towne Square, Suite 1200
Southfield, MI 48076
www.signatureassociates.com