

# 1444 I Street, NW



## HIGHLIGHTS

- Parking garage on site
- Bike Storage
- Renovated lobby
- 4 sides of windows
- 2 Spec Suites



Floor	SF	Rent	Available	Notes
Lower Level	2,181	\$27.50	Now	Open space with natural light
2nd floor	4,507	\$42.00- \$43.50	Now	Eye Street facing space with 3 sides of glass, Large conference room
4th Floor	1,329	\$42.00- \$43.50	Now	Brand new spec suite with 4 offices and kitchen
5th Floor	6,662	\$42.00- \$43.50	Now	Full shell floor with 4 sides of glass
7th Floor	6,600	\$42.00- \$43.50	Now	Full floor with 4 sides of glass, McPherson and Franklin Park views
8th Floor	6,422	\$42.00- \$43.50	Now	Full floor with 4 sides of glass, 2 Balconies, McPherson and Franklin Park views
10th Floor	3,300- 6,698	\$42.00- \$43.50	Now	Full or partial floor with 4 sides of glass, Office intensive build-out, McPherson and Franklin Park views

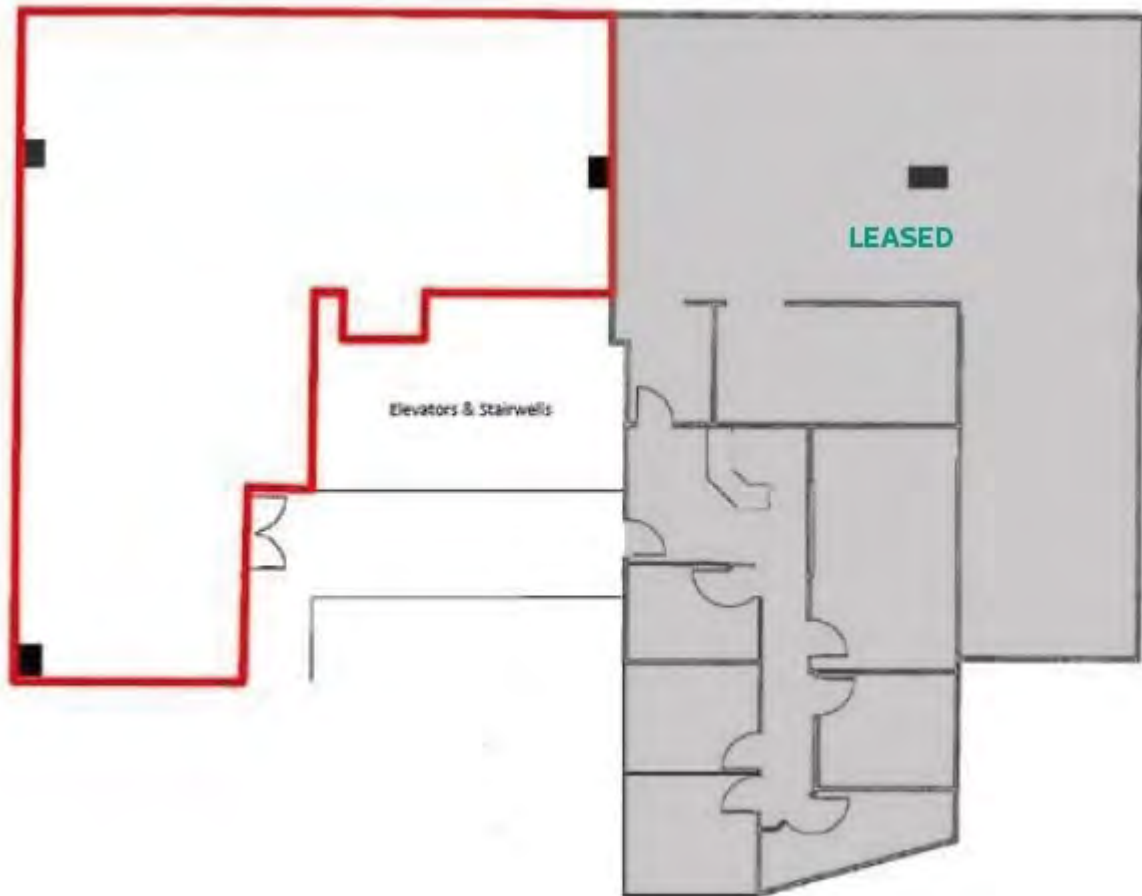
Nathan Wilson  
202.682.6260  
nwilson@summitcre.com

Wes Herr  
202.470.2820  
wherr@summitcre.com

Paul DeFilippes  
202.682.9113  
paul@summitcre.com

John Duffy  
202.682.9114  
jduffy@summitcre.com

## LOWER LEVEL- 2,181 SF



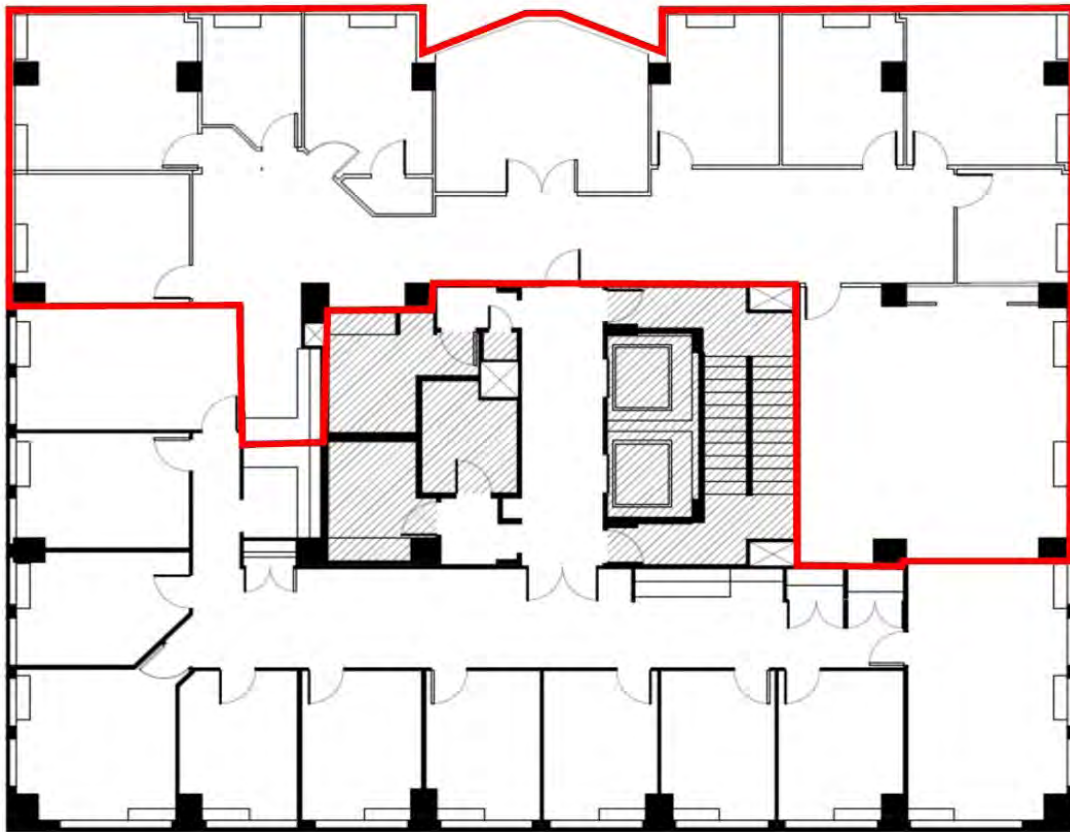
**Nathan Wilson**  
202.682.6260  
nwilson@summitcre.com

**Wes Herr**  
202.470.2820  
wherr@summitcre.com

**Paul DeFilippes**  
202.682.9113  
paul@summitcre.com

**John Duffy**  
202.682.9114  
jduffy@summitcre.com

## 2ND FLOOR- 4,507 SF



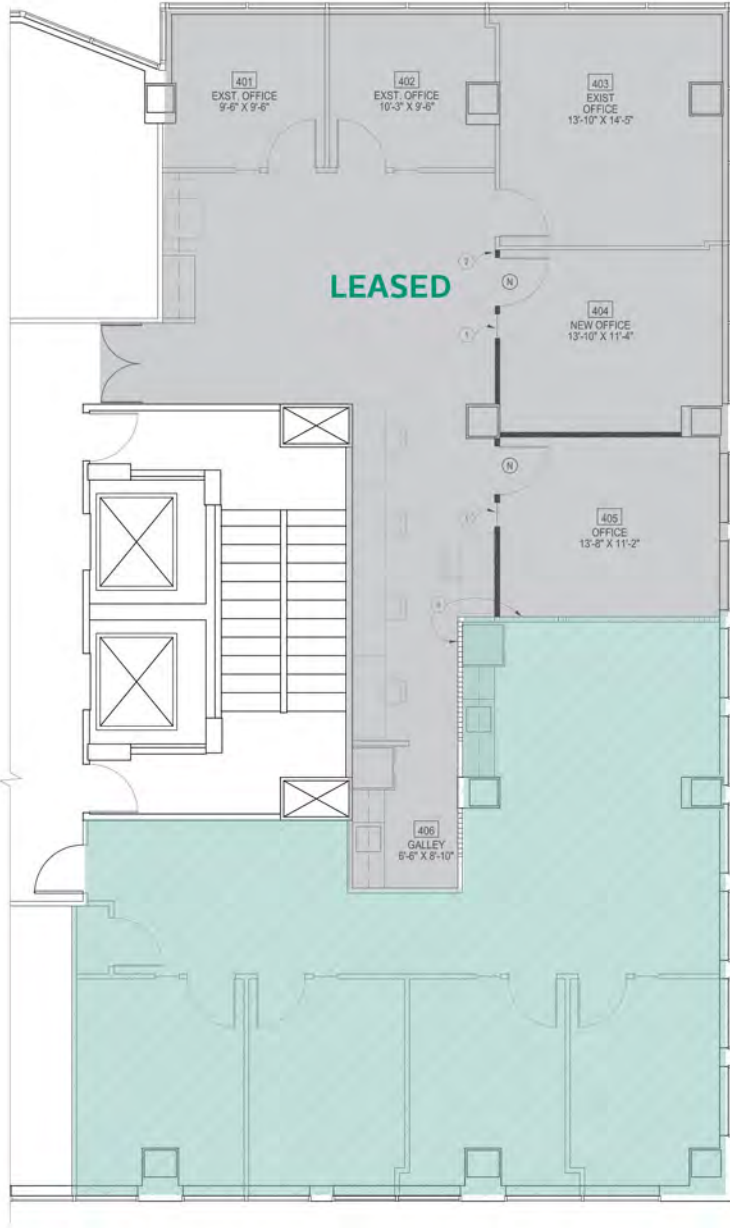
**Nathan Wilson**  
202.682.6260  
nwilson@summitcre.com

**Wes Herr**  
202.470.2820  
wherr@summitcre.com

**Paul DeFilippes**  
202.682.9113  
paul@summitcre.com

**John Duffy**  
202.682.9114  
jduffy@summitcre.com

## 4TH FLOOR- 1,329 SF



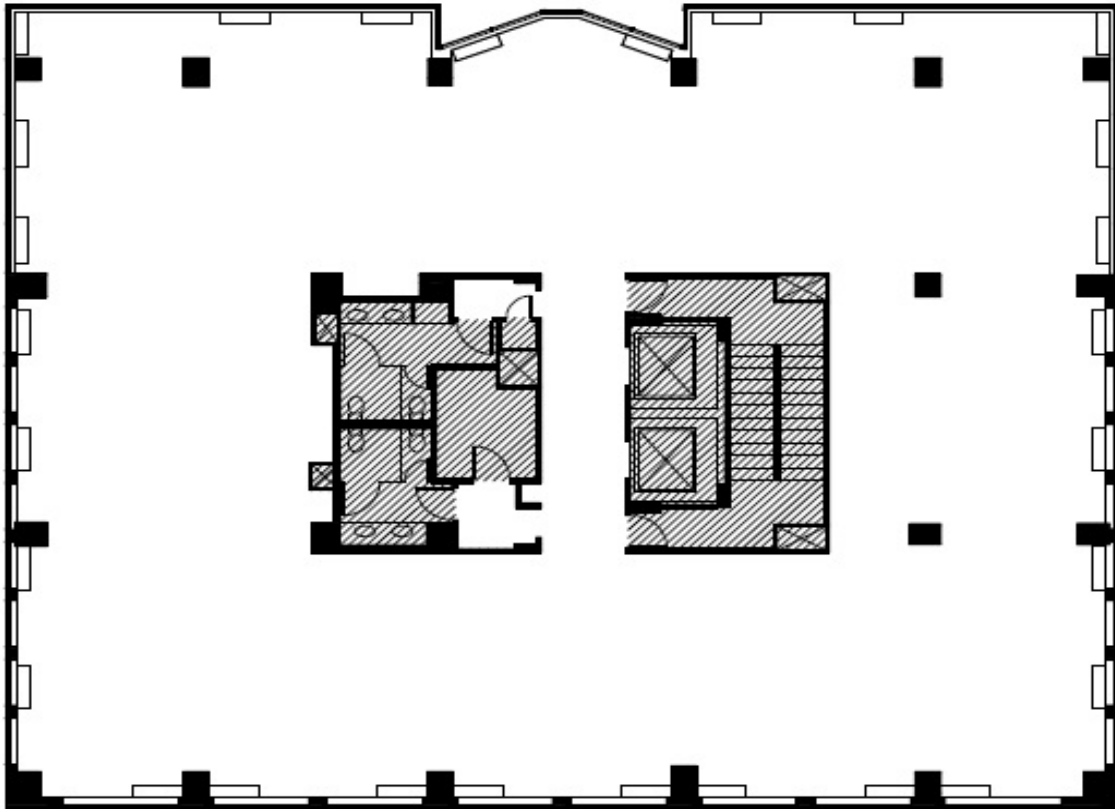
**Nathan Wilson**  
202.682.6260  
nwilson@summitcre.com

**Wes Herr**  
202.470.2820  
wherr@summitcre.com

**Paul DeFilippes**  
202.682.9113  
paul@summitcre.com

**John Duffy**  
202.682.9114  
jduffy@summitcre.com

## 5TH FLOOR- 6,662 SF



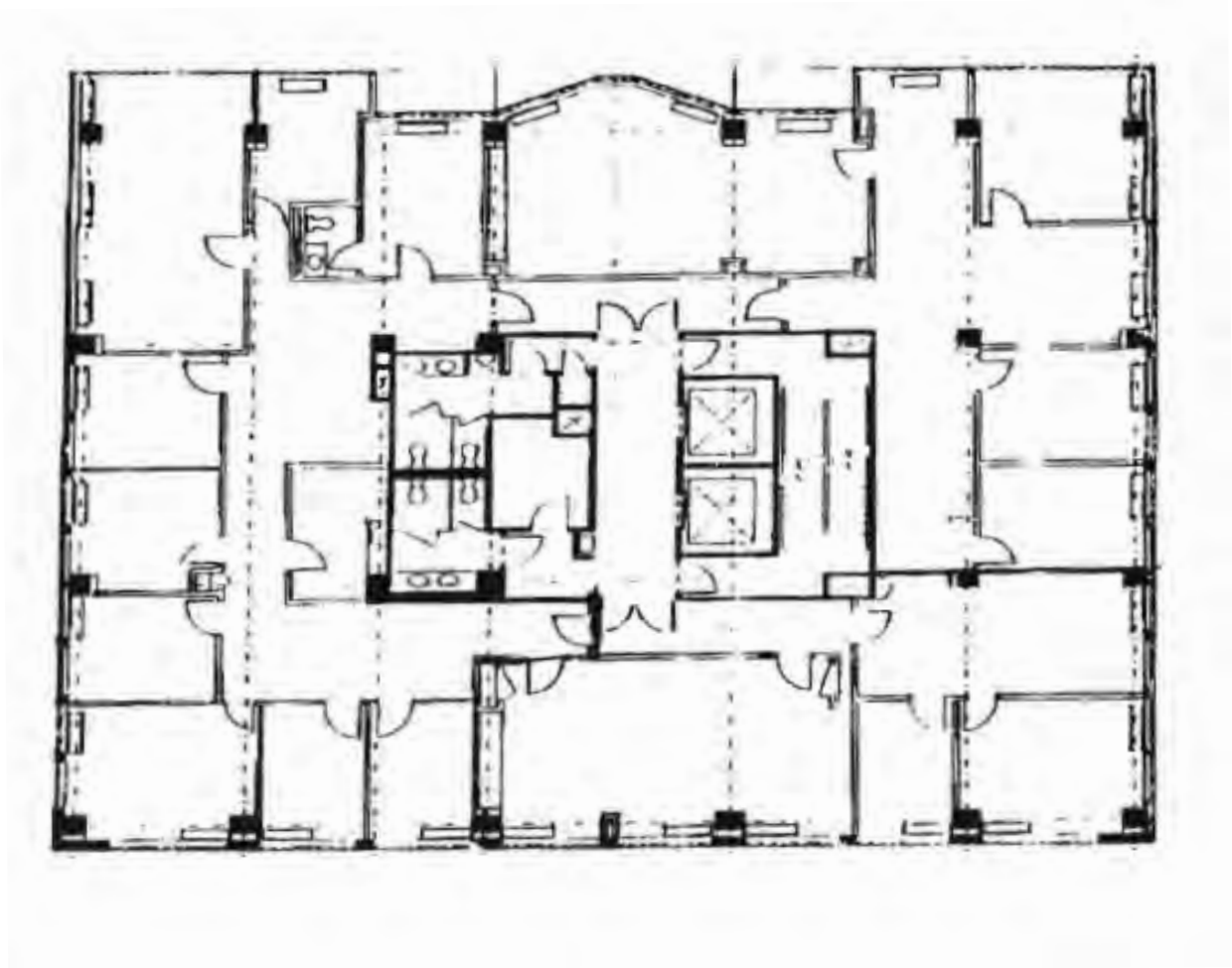
**Nathan Wilson**  
202.682.6260  
nwilson@summitcre.com

**Wes Herr**  
202.470.2820  
wherr@summitcre.com

**Paul DeFilippes**  
202.682.9113  
paul@summitcre.com

**John Duffy**  
202.682.9114  
jduffy@summitcre.com

## 7TH FLOOR- 6,600 SF



**Nathan Wilson**  
202.682.6260  
nwilson@summitcre.com

**Wes Herr**  
202.470.2820  
wherr@summitcre.com

**Paul DeFilippes**  
202.682.9113  
paul@summitcre.com

**John Duffy**  
202.682.9114  
jduffy@summitcre.com

## 8TH FLOOR- 6,422 SF



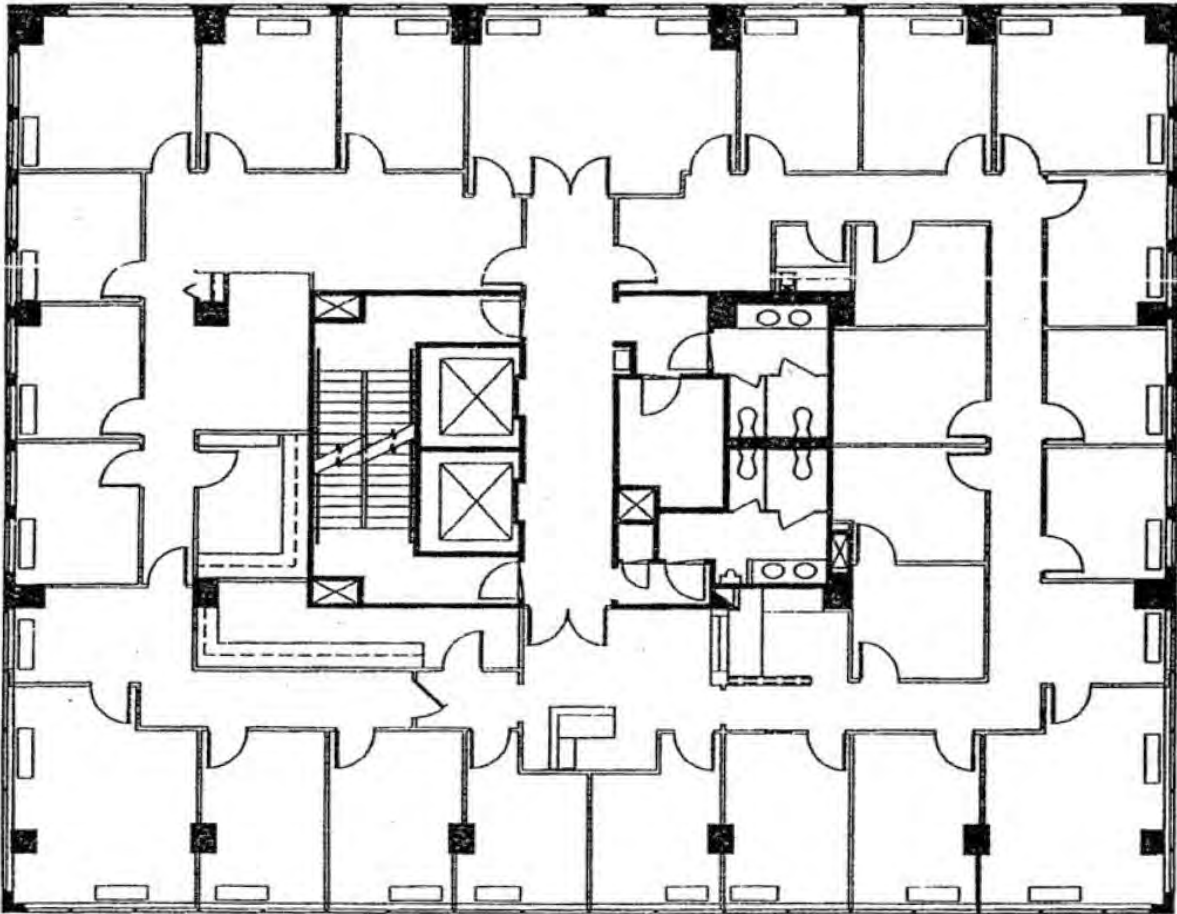
**Nathan Wilson**  
202.682.6260  
nwilson@summitcre.com

**Wes Herr**  
202.470.2820  
wherr@summitcre.com

**Paul DeFilippes**  
202.682.9113  
paul@summitcre.com

**John Duffy**  
202.682.9114  
jduffy@summitcre.com

**10TH FLOOR**  
**3,300 - 6,698 SF**



**Nathan Wilson**  
202.682.6260  
nwilson@summitcre.com

**Wes Herr**  
202.470.2820  
wherr@summitcre.com

**Paul DeFilippes**  
202.682.9113  
paul@summitcre.com

**John Duffy**  
202.682.9114  
jduffy@summitcre.com